



# Russell Hobbs

instructions,  
troubleshooting guide,  
and guarantee

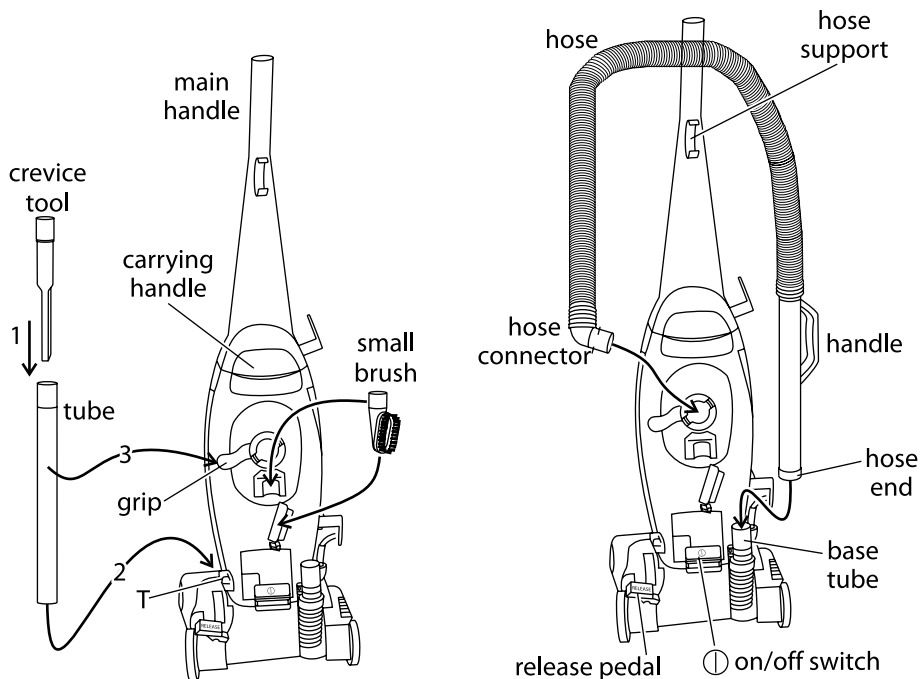
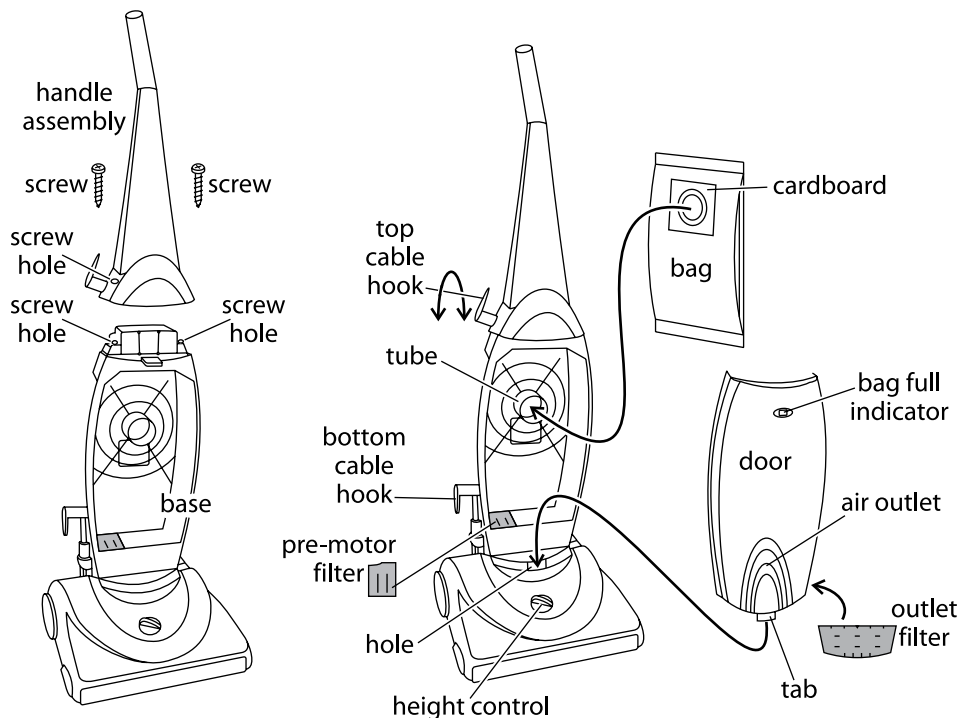
Problems?  
Don't take it back  
to the shop,  
they won't be able  
to fix it.



Ring the helpline

# 0845 658 9700

it's a local rate number



Read the instructions before using your vacuum cleaner, and keep them safe. If you pass the cleaner on, pass on the instructions too.

## **important safeguards**

Follow basic safety precautions, including the ones below. It's quite a list, but most of them are simple common sense.

- 1 The cleaner must only be used by or under the supervision of a responsible adult. Use and store it out of reach of children.
- 2 Don't put the cleaner in any liquid, and don't use it anywhere damp or wet.
- 3 Don't use the cleaner near a gas, oil (including paraffin), or open fire. The flame may be sucked towards the cleaner, causing a fire hazard.
- 4 Keep hair, clothing, fingers (and toes), away from the end of the tube, and from the brush roller. It won't drag you bodily into the bag, but it may give you a bit of a start.
- 5 Stuff you mustn't pick up:
  - a) don't pick up water or any other liquid – you'll short the motor.
  - b) don't pick up anything that may ignite spontaneously, like matches, or bits of fire-lighter.
  - c) don't pick up anything burning or smouldering, like cigarette ends, ashes, or embers. Wait till they're extinguished and cold.
  - d) don't pick up spillage from toner cartridges – the fine carbon particles may pass through the filter, short circuit the motor, and burn it out.
  - e) don't pick up cement or plaster dust – they'll combine with moisture in the air, clog the filter, burst the bag, and maybe burn out the motor too.
  - f) don't pick up anything sharp – you may puncture the bag and damage the motor.
  - g) don't pick up anything biological – you'll eventually have to clean it off the tubes, and there's always the possibility that viral particles may pass through the bag, reach the air outlet, and enter your air supply.
- 6 If you use the cleaner outdoors (e.g. cleaning the car), connect it to the electricity supply via a residual current device (RCD), with a rated residual operating current not exceeding 30mA. Don't let the cleaner get wet.
- 7 Don't leave it unattended when plugged in.
- 8 Keep an eye on the cable, so it doesn't catch on anything, or trip anyone up. Don't run the cleaner over the cable, you'll damage it.
- 9 If you're using the cleaner on stairs, sit it where it can't topple, and keep it below you, so if it does fall, it doesn't land on you.
- 10 Don't use the cleaner on people, animals, birds, or pets.
- 11 Unplug the cleaner and wind the cable round the cable hooks when not in use, before moving and before cleaning.
- 12 Don't use the cleaner if the bag is full – switch off, unplug, replace the bag.
- 13 Don't use the cleaner for any purpose other than those described in this booklet.
- 14 Don't use tools or attachments unless we supply them.
- 15 Don't leave the cleaner in direct sunlight.
- 16 Don't use the cleaner if it's damaged or malfunctions.
- 17 If the cable or plug is damaged, return the cleaner, to avoid hazard (back page).



## **household use only**

## **before using for the first time**

Remove the packaging, but keep it in case you ever need to return the cleaner.

### **filters**

Keep the filters clean. If they're blocked, you'll lose suction rapidly – check them every time you replace the bag.

### **count the bits**

The box should contain the base (the bit with the wheels), the handle assembly, the hose, the tube, the crevice tool, the small brush, and 2 spare bags. Check that you've got them all before you dispose of the packaging.

### **assembling the cleaner**

★ You'll need a cross-head screwdriver for this.

This is best done while you're sitting in a comfortable chair. You can do it standing up, but it's a labour saving device, so why not start as you mean to go on, have all the bits within reach (not forgetting the screwdriver), and sit down.

### **fit the handle**

- 1 There are two screws mounted in the screw holes in the top of the base.
- 2 Remove these screws, and set them aside (you'll need them in a minute).
- 3 Align the screw holes in the bottom of the handle assembly with those in the top of the base.
- 4 Lower the handle assembly on top of the base.
- 5 It's a bit fiddly – there are bits sticking up from the top of the base, and bits sticking down from the bottom of the handle assembly, but if you keep the holes aligned, you can't go wrong.
- 6 When it's aligned properly, you'll have a gap of about half a centimetre all round, between the handle assembly and the base.
- 7 Check the alignment of the holes again.
- 8 If you're happy that they're still aligned, then hold the handle assembly in place with one hand, and give the top of the handle a sharp (but not brutal) slap downwards with the other hand – don't go over the top, you're moving a fairly light bit of plastic half a centimetre downwards, not drilling for oil.
- 9 Find the screws, screw them through the holes in the handle assembly, into the holes in the top of the base, and tighten them –don't strain, you don't want to over-tighten them.
- 10 Turn the front of the cleaner towards you.

### **fit the bag**

- 11 There's a cardboard square on the front of the bag, with a hole in its centre.
- 12 Push the hole over the short tube sticking out from the middle of the cleaner, till the front of the cardboard square touches the wall of the cleaner.

### **shut the door**

- 13 Check that the bag is tucked inside the cleaner, so it won't become trapped when you fit the door.
- 14 Fit the tab on the bottom of the door into the hole behind the height control.
- 15 Press the door against the front of the cleaner – you'll hear it click into place.

## **store the cable**

- 16 Check that the top cable hook is upright – you can rotate it, to let you slip the cable off, instead of having to unwind it.
- 17 Wind the cable round the top and bottom cable hooks.

## **fit the crevice tool, tube, and small brush**

- ★ refer to the lower left drawing on page 2
- 18 Slide the crevice tool inside the tube (1).
- 19 Fit the bottom of the tube over the mount sticking out from the side of the cleaner, towards the bottom – with a stretch of the imagination, it might look a bit like a “T” on its back (or maybe not) (2).
- 20 Push the centre of the tube under the grip sticking out from the hole in the middle of the cleaner (3).
- 21 Push the small brush into the clip and space shaped for it, just under the hole in the middle of the cleaner.

## **fit the hose**

- ★ refer to the lower right drawing on page 2
- 22 The hose has an angled connector with a clip at either side, at one end, and a tube with a handle at the other.
- 23 Push the hose end over the top of the base tube.
- 24 Push the bendy part of the hose into the hose support.
- 25 Fit the hose connector into the hole in the middle of the cleaner:
  - a) turn the connector about 45 degrees
  - b) squeeze the clips
  - c) push the connector into the hole
  - d) give it a sharp slap, to push it home
- 26 It's not meant to be removed, but, if you ever need to remove it from the hole:
  - a) hold the cleaner firmly with one hand
  - b) squeeze the clips
  - c) waggle it back and fore, while pulling it away from the cleaner
- 27 That's it – all together, and ready for use.

## **carrying the cleaner**

- 28 Normally, you'd just grab it by the handle, and trundle it round on its wheels, but if you want to carry it upstairs, for instance, you need to be a bit more circumspect.
- 29 It's fairly heavy, and it's an awkward shape to carry:
  - a) slip one hand under and into the carrying handle,
  - b) grip the main handle with the other hand
  - c) if you feel it's a strain, stop, rest, then try again

## **what fits to what**

- 30 Leave the hose connector attached to the cleaner.
- 31 The other end of the hose may be attached to the base tube, if you're using the cleaner as an upright, or to one of the tools, if you're not.

## release pedal

- 32 The pedal locks the cleaner and base together, for storage, or to use the tools.
- 33 To use the cleaner as an upright cleaner, press the pedal down with your toe, ease the handle back, then take your toe off the pedal.
- 34 This lets you push the cleaner back and fore, to vacuum the floor.
- 35 To lock the cleaner and base together again, raise the handle to the vertical position, then push it forward.

## switch

- 36 Press and release the switch with your toe, to turn the motor on.
- 37 If you've finished, if you want to change the brush height for a different floor covering, if you want to change from using it upright to using the hose, or if you just want to stop for a cup of tea, press and release the switch with your toe, to turn the motor off.
- 38 That's the rear of the cleaner dealt with – now for the front.

## set the floor type

- 39 Tilt the handle back, to raise the cleaner slightly from the floor, to make moving the brush height control easier.
- 40 Set the height control to suit the floor covering – fully anti-clockwise for bare floor, the middle settings for short to medium pile, and fully clockwise for long pile.
- 41 When using the tools, set the control to long pile, to prevent the brush continually hitting the surface it's sitting on.

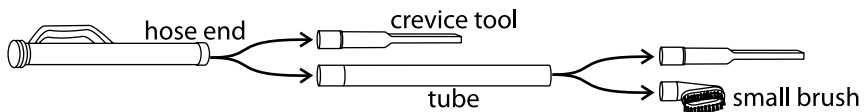
## plug in

**caution** If you've inadvertently kicked the switch, the cleaner may start up when you plug it in – press and release the switch with your toe to switch it off.

- 42 Turn the top cable hook down, to release the cable.
- 43 Use a socket near the area to be cleaned, plug in, and switch the socket on, if it's switchable.

## press the pedal

- 44 Stand behind the cleaner, press the release pedal down with your toe, ease the handle back, then take your toe off the pedal.
- 45 The cleaner is now ready to use upright.



**upright cleaning** push the hose end over the base tuber, to use the cleaner upright

**crevice tool** push the hose end over the crevice tool – as its name implies, use this tool to reach down the sides of upholstery, and into awkward spaces, nooks, and crannies nothing else can reach

**crevice tool and tube** push the hose end over the thin end of the tube, then push the thick end of the tube over the crevice tool – use this to reach curtain rails, picture rails, and covings

small brush and tube push the hose end over the thin end of the tube, then push the thick end of the tube over the small brush – use it to remove pet hair, lint, and dust from blinds, curtains, and upholstery; to brush/clean awkward corners

## **switch on**

46 Press and release the switch with your toe to switch the cleaner on.

## **cleaning**

47 Move the cleaner over the floor, cleaning a small area at a time.

48 When you change areas, overlap the previous area, to avoid missing anything.

## **switch off**

49 If you've finished, if you want to change the brush height for a different floor covering, if you want to change from using it upright to using the hose, or if you just want to stop for a cup of tea, press and release the switch with your toe, to turn the motor off, then push the handle forward till it's fully upright, to lock the base.

## **changing the floor type**


50 Switch off and adjust the brush height control before moving the cleaner to a different floor covering.

51 Using the "wrong" setting won't do any harm, but you won't get the performance you would with the correct setting.

## **using the tools**

52 Press and release the switch, to switch the motor off.

53 Push the handle forward till it's fully upright, and the pedal clicks into position to hold it there.

54 Move the brush height control fully over to the long pile  setting, to prevent the brush hitting the surface it's sitting on.

55 Pull the hose end off the base tube.

56 Either fit the tool to the hose end, or fit the tube to the hose end, then fit the tool to the tube.

57 Press and release the switch with your toe to switch the cleaner on.

## **finished cleaning?**

58 Press and release the switch with your toe, to turn the motor off.

59 Push the handle forward, to lock the base.

60 Unplug the cleaner (switch the socket off first, if it's switchable).

61 Turn the top cable hook up, and wind the cable round both cable hooks.

## **bag full indicator**

62 This shows red when the bag is full.

## **changing the bag**

63 You don't have to replace the bag after each use, but you do have to keep an eye on the bag full indicator, and change the bag when it's full, otherwise you'll choke the cleaner.

64 Switch off, unplug, and leave the cleaner for a minute, to let the dust settle.

65 Pull the top of the door away from the cleaner, then lift the door off.

- 66 Using the fingers of both hands, reach behind the bag, and pull the cardboard gently off the tube in the middle of the cleaner.
- 67 Grip the cardboard part of the bag, take it to the dustbin, then lower it gently into the dustbin.
- ✱ Try not to handle the bag itself – if you squeeze it, you'll eject the contents over your newly cleaned floor.
- 68 Don't try to empty the bag and reuse it. The bag takes quite a pounding from the suction of the cleaner, and from the dust and dirt hitting its walls. Oils from your skin will weaken it further, so it might burst inside the cleaner.
- 69 Hold the new bag by the cardboard rectangle.
- 70 Push the hole over the short tube sticking out from the middle of the cleaner, till the front of the cardboard square touches the wall of the cleaner.
- 71 Check that the bag is tucked inside the cleaner, so it won't become trapped when you fit the door.
- 72 Fit the tab on the bottom of the door into the hole behind the height control.
- 73 Press the door against the front of the cleaner – you'll hear it click into place.

## **check the filters**

- 74 While you're changing the bag, check the filters.
- 75 They're fibre, and they're unlikely to get terribly dirty, but if you need to clean them, pick them out of their housings with a fingernail, and wash them in warm, soapy water.
- 76 Leave then to air dry for 24 hours before replacing them.
- 77 The pre-motor filter is in the corner, by the bottom left corner of the bag.
- 78 The outlet filter is inside the bottom of the door.

## **general cleaning**

Switch the cleaner off and unplug it before cleaning.

Don't put any part of the cleaner in a dishwasher.

Don't use harsh or abrasive cleaning agents or solvents.

## **timing**

The amount and frequency of cleaning depends on the amount of use the cleaner gets, and the amount of time you can spare. Basically, the better you look after it, the longer it'll last. Keep an eye on it as you use it. Clean the filters when you empty the bag. If anything else needs cleaning, do it there and then, don't put it off, in case you forget.

## **external surfaces**

Wipe external surfaces with a damp cloth. A dab of washing-up liquid should remove stubborn stains, but clean it off afterwards, or it may itself cause staining.

## **tools**

Wipe with a damp cloth, or hand wash in warm soapy water. Rinse to remove the soap, and air dry before using them.

## **hose**

Wipe with a damp cloth. You can use a dab of washing-up liquid to remove stubborn stains. Clean off all trace of the washing-up liquid, and check it's dry before refitting.



## brush roller

String and the like may wind round the brush roller. Upend the cleaner, and snip any string, etc. carefully with scissors. Don't cut the bristles.

## blockages

No matter how careful you are, sooner or later you're going to block the cleaner. Don't worry, we thought of that, we've fitted the motor with a temperature cut-out. A blockage will trigger the cut-out, and the motor will stop.

## don't panic!

- 1 Switch off, unplug, and leave the cleaner for at least an hour to cool down fully. This'll also reset the cut-out.
- 2 If you don't unplug the cleaner, the cut-out may not reset.
- 3 Spread a newspaper on the floor, you're going to make a mess.

## suction blocked

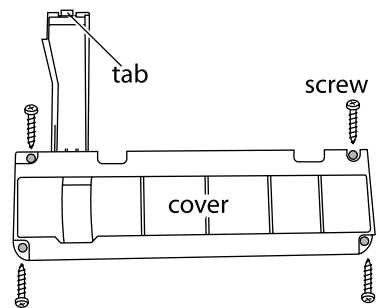
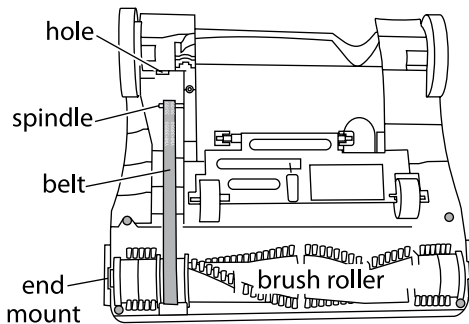
- 4 If you're using one of the tools, remove and check it first.
- 5 Check the bag, door, and the fibre filters.
- 6 Remove and check the hose.
- 7 Check the base tube – this runs down to the brush roller. Don't use anything sharp.
- 8 If the blockage isn't clear by now, try again, as there's nowhere left to check.
- 9 Still not clear? – Ring the help line (back page).

## no brush action (upright)

- 10 If the brush isn't turning, the belt may have broken.
- 11 A broken belt may be due to wear and tear, but it may also be caused by a sudden blockage, due to something like a bit of gravel jamming the brush roller.
- 12 If this happens in use, you'll probably notice the change in pitch of the motor.

## changing the belt

- 13 You'll need a crosshead screwdriver, and a replacement belt.
- 14 First – switch off, unplug, and let the cleaner cool down.
- 15 Lay the cleaner front-down.
- 16 Remove the four screws from the base (see below).



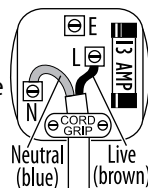
- 17 Lift off the cover, and pull out the broken belt, if it's still there (it may be on the floor).
- 18 Fit the new belt over the spindle.
- 19 Lift the end of the brush roller out of the end mount.
- 20 Slip the belt over the brush roller.
- 21 Pull the brush roller against the belt, and replace it in the end mount.

- 22 Rotate the brush roller with your fingers, to check it's moving freely.
- 23 Locate the tab on the rear of the cover in the hole behind the bent, and replace the cover.
- 24 Replace the four screws.
- 25 Turn the cleaner the right way up.
- 26 Plug it in, and check it's working – just in case there may be a blockage somewhere that caused the belt to break.



## connection

The product doesn't need an earth. It has a 13A BS1362 fuse in a 13A BS1363 plug. To replace the plug, fit the blue wire to N, and the brown wire to L. Fit the cord grip. If in doubt, call an electrician. Don't use a non-rewireable/moulded plug unless the fuse cover is in place. If you remove the plug, dispose of it.



## wheelie bin symbol

To avoid environmental and health problems due to hazardous substances in electrical and electronic goods, appliances marked with this symbol mustn't be disposed of with unsorted municipal waste, but recovered, reused, or recycled.



## helpline – 0845 658 9700

If you need help, note the **Model No** (on the rating plate) and ring the helpline 0845 658 9700 (it's a local rate number).

## spare parts

Note the Model No (on the rating plate) and the part(s) you need, then ring the helpline – 0845 658 9700, or email [service@saltoneurope.com](mailto:service@saltoneurope.com) for price(s). You may then order spares with VISA or MASTERCARD.

## service

If you ring Customer Service, please have the **Model No** to hand, as we won't be able to help you without it. It's on the rating plate (usually underneath the product).

The cleaner isn't user-serviceable. If it's not working, read the instructions, check the plug fuse and main fuse/circuit breaker.

If that doesn't solve the problem, don't take the cleaner back to the place you bought it – they won't be able to fix it. Ring Customer Service.

If they advise you to return the product to us, pack it carefully, include a note with your name, address, day phone number, and what's wrong. If under guarantee, say where and when purchased, and include proof of purchase (till receipt). Send it to:

**Customer Service, Russell Hobbs Ltd, Fir Street, Failsworth, Manchester M35 0HS**

email: [service@russellhobbs.com](mailto:service@russellhobbs.com)

telephone: 0845 658 9700 (local rate number)

## guarantee

Defects affecting product functionality appearing within one year of purchase will be corrected by replacement or repair provided the product is used and maintained in accordance with the instructions. Your statutory rights are not affected.

Documentation, packaging, and product specifications may change without notice.

## wheelie bin symbol

To avoid environmental and health problems due to hazardous substances in electrical and electronic goods, appliances marked with this symbol mustn't be disposed of with unsorted municipal waste, but recovered, reused, or recycled.

## online

[www.russellhobbs.co.uk](http://www.russellhobbs.co.uk) for more products