



# Russell Hobbs



instructions, troubleshooting guide, and guarantee

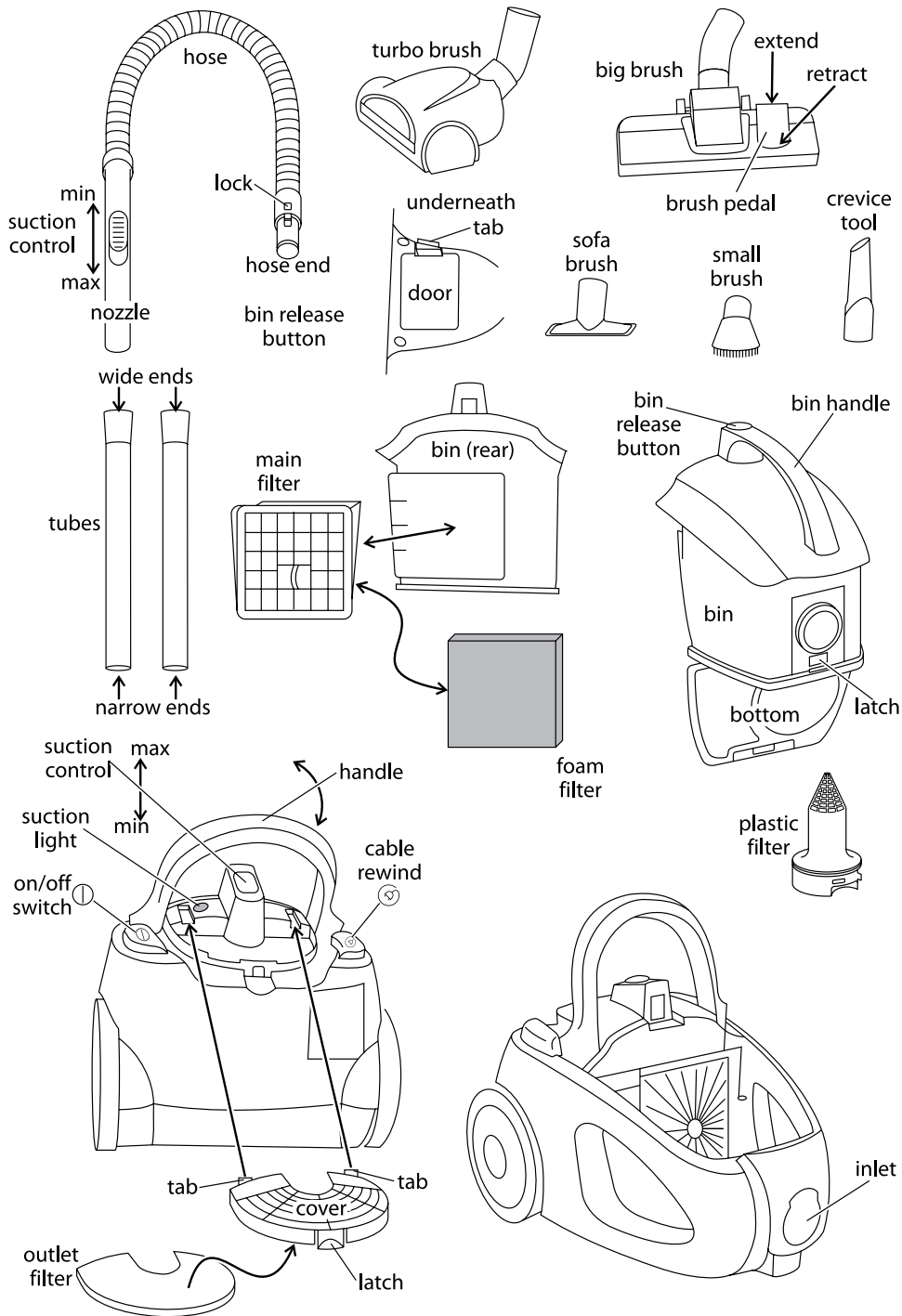
## Problems?

Don't take it back to the shop,  
they won't be able to fix it.

Ring the helpline

# 0845 658 9700

it's a local rate number



Read the instructions before using your vacuum cleaner, and keep them safe. If you pass the cleaner on, pass on the instructions too.

## **important safeguards**

Follow basic safety precautions, including the ones below. It's quite a list, but most of them are simple common sense.

- 1 The cleaner should only be used by or under the supervision of a responsible adult. It's not a toy – don't let children play with it.
- 2 Don't put the cleaner in any liquid, and don't use it anywhere damp or wet.
- 3 Don't use the cleaner near a gas, oil (including paraffin), or open fire. The flame may be sucked towards the cleaner, causing a fire hazard.
- 4 Keep hair, clothing, fingers (and toes), away from the end doing the sucking, and from the brush. It won't drag you into the bin, but it may give you a bit of a start.
- 5 Stuff you mustn't pick up:
  - a) don't pick up any liquid – you'll short the motor
  - b) don't pick up stuff that may ignite spontaneously, like matches, bits of fire-lighter
  - c) don't pick up anything burning or smouldering, like cigarette ends, ashes, or embers – wait till they're extinguished and cold
  - d) don't pick up spillage from toner cartridges – the fine carbon particles may pass through the filter, short circuit the motor, and burn it out
  - e) don't pick up cement or plaster dust – they'll combine with moisture in the air, clog the filter, scour the bin, and maybe burn out the motor too
  - f) don't pick up anything sharp – you may puncture the filter and damage the motor
  - g) don't pick up anything biological – you'll eventually have to clean it off the filter, and there's always the possibility that viral particles may pass through the filter, reach the air outlet, and enter your air supply
- 6 If you use the cleaner outdoors (e.g. cleaning the car), connect it to the electricity supply via a residual current device (RCD), with a rated residual operating current not exceeding 30mA. Don't let the cleaner get wet.
- 7 Don't leave it unattended when plugged in.
- 8 Keep an eye on the cable, so it doesn't catch on anything, or trip anyone up. Don't run the cleaner over the cable, you'll damage it.
- 9 If you're using the cleaner on stairs, sit it where it can't topple, and keep it below you, so if it does topple, it won't land on you.
- 10 Don't use the cleaner on people, animals, birds, or pets.
- 11 Unplug the cleaner and rewind the cable when not in use, before moving and before cleaning.
- 12 Don't use the cleaner if the bin is full – switch off, unplug, and empty it.
- 13 Don't use the cleaner for any purpose other than those described in these instructions.
- 14 Don't use accessories or attachments other than those we provide.
- 15 Don't leave the cleaner in sunlight, prolonged exposure to UV may damage plastics.
- 16 Don't use the cleaner if it's damaged or malfunctions. If the cable or plug is damaged, the cleaner must be returned in order to avoid hazard.



## **household use only**

### **before using for the first time**

Remove all packaging, but keep it in case you ever need to return the cleaner.

### **count the bits**

In the box you'll find two tubes, a turbo brush, a big brush, a crevice tool, a small brush, a sofa brush, and a hose (with nozzle). They may be packed separately, so check all of the packaging before you dispose of it.

## filters

Keep the filters clean – if they get blocked, you'll lose suction rapidly.

## fitting the hose

- 1 Turn the hose end, to align the lock with the inlet in the front of the cleaner.
- 2 Push the hose end into the inlet. You'll hear a click as it locks into position
- 3 Give it a gentle tug to check it's fitted properly.

## cable

- 4 Pull as much cable as you need from the back of the cleaner.
- 5 The yellow band round the cable tells you there's about a metre left.
- 6 The red band about half a metre later tells you "Stop pulling, you've run out of cable!".
- 7 Keep an eye on the cable so it doesn't catch on anything, or trip anyone (including you).

## carrying and moving the cleaner

- 8 Lift the cleaner only by the handle.
- 9 Don't sit it upright – it'll fall over.
- 10 You may move the cleaner around by pulling gently (that's gently), on the hose.



## choose the tool for the job

- 11 The tools will fit on the nozzle, or on the narrow end of either tube.
- 12 You'll have your own preferences, but here are a few tips for the first time user:
  - big brush** normally used with both tubes, for floors and carpets:  
Press the rear of the brush pedal to extend the bristles, for floor coverings with little or no pile.  
Press the front of the brush pedal to retract the bristles, for rugs, carpets, and anything with pile.
  - turbo brush** normally used with both tubes, for floors and carpets – this has a rotating brush, powered by suction, for deeper cleaning.
  - crevice tool** as the name implies, down the sides of upholstery, in awkward spaces, nooks, and crannies nothing else can reach.
  - small brush** use it to remove pet hair, lint, and dust from blinds, and curtains, and to brush/clean awkward corners.
  - sofa brush** use this to remove pet hair, lint, and dust from upholstery, and other small, flat areas – don't use it on hanging curtains, as it doesn't have the bristles necessary to let air flow freely, use the small brush instead.
- 13 We suggest the big brush for the daily clean, the turbo for the weekly deep clean.

## tubes

- 14 The tubes are identical. The narrow end of either tube will fit into the wide end of the other tube, or into to any of the tools, to provide extra length, where needed.
- 15 Push the wide end of the tube on to the nozzle.
- 16 Choose a tool, and push it on to the narrow end of the tube.

## suction control

- 17 There are two ways to control the suction:
  - a) The suction control on the top of the cleaner, behind the bin – move it towards the bin to increase the suction, away from the bin to reduce suction.
  - b) The suction control on the nozzle – move it towards the nozzle for maximum suction, away from the nozzle, to reduce suction.

## plug in

**caution** If you've accidentally pressed the on/off switch ①, the cleaner will work when you plug it in. This could give you a bit of a start, so be careful.

- 18 Put the plug into a socket near the area to be cleaned (switch the socket on, if it's switchable).

## **switching on**

19 Press and release the on/off switch ①, to turn the cleaner on.

## **cleaning**

20 Move the tool over the surface, cleaning a small area at a time.

21 When you move to a new area, overlap the previous area, to make sure none of the surface is missed.

## **switching off**

22 If you've finished, if you want to change tools, or if you just want to stop for a rest, press and release the on/off switch ①, to turn the cleaner off.

## **finished cleaning?**

23 Press and release the on/off switch ①, to turn the cleaner off.

24 Unplug the cleaner (switch the socket off first, if it's switchable).

25 Stand clear of the cable, and press the Ⓢ button – the cable will rewind.

26 Keep clear of the cable, as it rewinds at a fair lick. If it catches on anything, stop pressing, and it'll stop rewinding.

27 We've tried not to make it too powerful, to avoid wrecking your home, so you may need to push the plug end into the storage area manually.

## **suction light**

28 The suction light, on top of the cleaner, monitors the amount of suction available to the cleaner.

29 It glows when the cleaner is stressed, then goes out as the stress is removed.

- a) unless it glows steadily, you needn't worry about it
- b) it'll flicker while you're cleaning, as the load on the motor changes
- c) it'll pulse when you're using the turbo brush, as the load varies more with this brush
- d) it'll glow steadily if you block the end of the hose – moving the hose will cure this
- e) it'll glow steadily if you let the bin get full – stop and empty it
- f) it'll glow steadily if there's a blockage – stop and clear the blockage

## **removing and emptying the bin**

30 You don't have to empty the bin after each use, but it's a very good idea. Your cleaner will happily work till it's chock full, but you'll be wasting energy swirling yesterday's dust around. Energy that could be better used sucking up today's dust.

31 Switch off, unplug, and leave it for a minute, to let the dust settle.

32 Press in the lock on the hose end, and pull the hose out of the cleaner – this'll keep the hose out of your way.

33 Hold the bin handle, press the bin release button (on top of the bin handle), then lift the bin up and out of the cleaner.

34 Lower the bin into your dustbin so the bottom of the bin is below the rim – this'll prevent the dust dispersing into your environment.

35 Press the latch on the front of the bin, to open the bottom of the bin, and dump its contents into the dustbin.

36 Give the bin a couple of taps, to shake all the dirt loose.

37 Lift the bottom of the bin up to close it.

38 Lower the bin into the cleaner, then push it gently down, to lock it into place.

## **check the filters**

39 While you're emptying the bin, check the filters – especially the plastic filter. Blocked filters quickly reduce suction, and they're easy enough to clean.

## precautions

40 Spread out some newspaper – you're likely to make a mess.

41 Wearing rubber gloves is a good idea – they'll protect your fingers from anything nasty that's reached the filters.

## remove the filters

42 Turn the bin round – the filters are at the back.

43 Pull the main filter out of the rear of the bin.

44 Turn it round, and pull the foam filter out of the rear of the main filter.

45 The foam filter is likely to be the dirtiest, as it's job is to protect the main filter.

## foam filter

46 Wash the foam filter in warm soapy water, rinse it thoroughly, squeeze it out, then leave it to air dry.

✱ Check that the filter is completely dry before replacing it on the main filter.

## main filter

47 This filters the returning airflow.

48 It's a HEPA filter, it's expensive to replace, so be gentle with it. With careful handling, it should last for years.

49 Tap the filter gently over the newspaper, to dislodge any dirt.

50 If it's really dirty, soak it in warm soapy water for a few minutes, rinse under a running tap, to remove all trace of soap, then let it air dry.

✱ Check that the filter is completely dry before replacing it in the cleaner.

## plastic filter – this is the one most likely to block

51 This is inside the bin, you can see it when you remove the main filter.

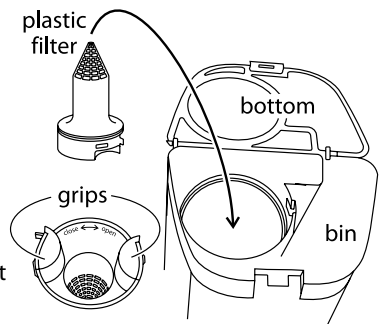
52 If you need to remove it:

- turn the bin upside down
- use the grips to turn the filter about 8mm clockwise
- lift it out of the bin

53 Tap it over the newspaper, to dislodge any dirt – anything stubborn can be brushed off (an old toothbrush is ideal for this).

54 Wash it in warm soapy water, rinse under a running tap, then air dry.

✱ Check that the filter is completely dry before replacing it in the cleaner.



## replace the filters

55 Drop the plastic filter back into the bin, and turn it anti-clockwise to lock it in place.

56 Close the bottom of the bin.

57 Turn the bin right way up.

58 Put the foam filter into the rear of the main filter.

59 Put the main filter into the rear of the bin.

60 Lower the bin into the cleaner, then push it gently down, to lock it into place.

## outlet filter

61 This is unlikely to get dirty, but you should check it every couple of weeks or so.

62 Put a finger under the latch, prise the cover up, and lift it off the cleaner.

63 This will expose the outlet filter – it's felt, so be gentle with it.

64 Tap the filter gently over the newspaper, to dislodge any dirt.

65 If it's really dirty, soak it in warm soapy water for a few minutes, rinse under a running tap, to remove all trace of soap, then let it air dry.

✱ Check that the filter is completely dry before replacing it in the cleaner.

66 fit the outlet filter inside the cover.

67 Locate the tabs on the front of the cover in the slots in the rear of the cleaner, then push the back of the cover down, to latch it in place.

### **cleaning the cleaner**

68 Switch the cleaner off and unplug it before cleaning.

69 Don't put any part of the cleaner in a dishwasher.

70 Don't use harsh or abrasive cleaning agents or solvents.

71 Wipe external surfaces of the cleaner with a damp cloth.

72 Wipe the tools and tubes with a damp cloth.

73 A dab of washing-up liquid will remove stubborn stains, but clean it off afterwards, or it may stain.

### **timing**

74 Clean the cleaner frequently. Basically, the better you look after it, the longer it'll last. Keep an eye on it as you use it, and examine the filters when you empty the bin. If anything needs cleaning, do it there and then, don't put it off, in case you forget.

### **blockages**

75 No matter how careful you are, sooner or later you'll block the cleaner.

### **don't panic!**

If the cleaner starts to get noisy and you start to lose suction, don't worry, it's not the end of the world, you've probably just blocked it up.

1 Switch the cleaner off and unplug it.

2 Spread a newspaper on the floor, you're going to make a mess.

3 If you're using one of the tools, remove and check it first.

4 Turn the turbo brush over, press the tab, and remove the door, to check the turbo.

5 Remove the hose and check it.

6 Use something blunt, like the blunt end of a ball-point pen to dislodge any blockage.

7 The plastic filter is the cleaner's first line of defence, so it's likely to be the first one to block up, if you're using the cleaner to pick up anything dodgy.

8 Remove the bin, and check the foam filter and main filter.

9 The outlet filter shouldn't cause a problem, but check it anyway, just in case.

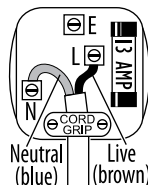
10 If you haven't cleared the blockage by now, try again.

11 Still not clear? – Ring the helpline.

## connection

The cleaner doesn't need an earth. It has a 13A BS1362 fuse in a 13A BS1363 plug. To replace the plug, fit the blue wire to N, and the brown wire to L. Fit the cord grip. If in doubt, call an electrician.

Don't use a non-rewireable/moulded plug unless the fuse cover is in place. If you remove the plug, dispose of it.



## helpline – 0845 658 9700

If you need help, note the Model No (on the rating plate) and ring the helpline 0845 658 9700 (it's a local rate number).

## service

If you ring Customer Service, please have the **Model No** to hand, as we won't be able to help you without it. It's on the rating plate (usually underneath the product).

The cleaner isn't user-serviceable. If it's not working, read the instructions, check the plug fuse and main fuse/circuit breaker.

If that doesn't solve the problem, don't take the cleaner back to the place you bought it – they won't be able to fix it. Ring Customer Service.

If they advise you to return the product to us, pack it carefully, include a note with your name, address, day phone number, and what's wrong. If under guarantee, say where and when purchased, and include proof of purchase (till receipt). Send it to:

**Customer Service, Russell Hobbs Ltd, Fir Street, Failsworth, Manchester M35 0HS**

email: [service@russellhobbs.com](mailto:service@russellhobbs.com)

telephone: 0845 658 9700 (local rate number)

## guarantee

Defects affecting product functionality appearing within one year of purchase will be corrected by replacement or repair provided the product is used and maintained in accordance with the instructions. Your statutory rights are not affected. Documentation, packaging, and product specifications may change without notice.

## wheelie bin symbol

To avoid environmental and health problems due to hazardous substances in electrical and electronic goods, appliances marked with this symbol mustn't be disposed of with unsorted municipal waste, but recovered, reused, or recycled.



## online

[www.russellhobbs.co.uk](http://www.russellhobbs.co.uk) for more products

18379

550-879