



Russell Hobbs



instructions, troubleshooting guide, and guarantee

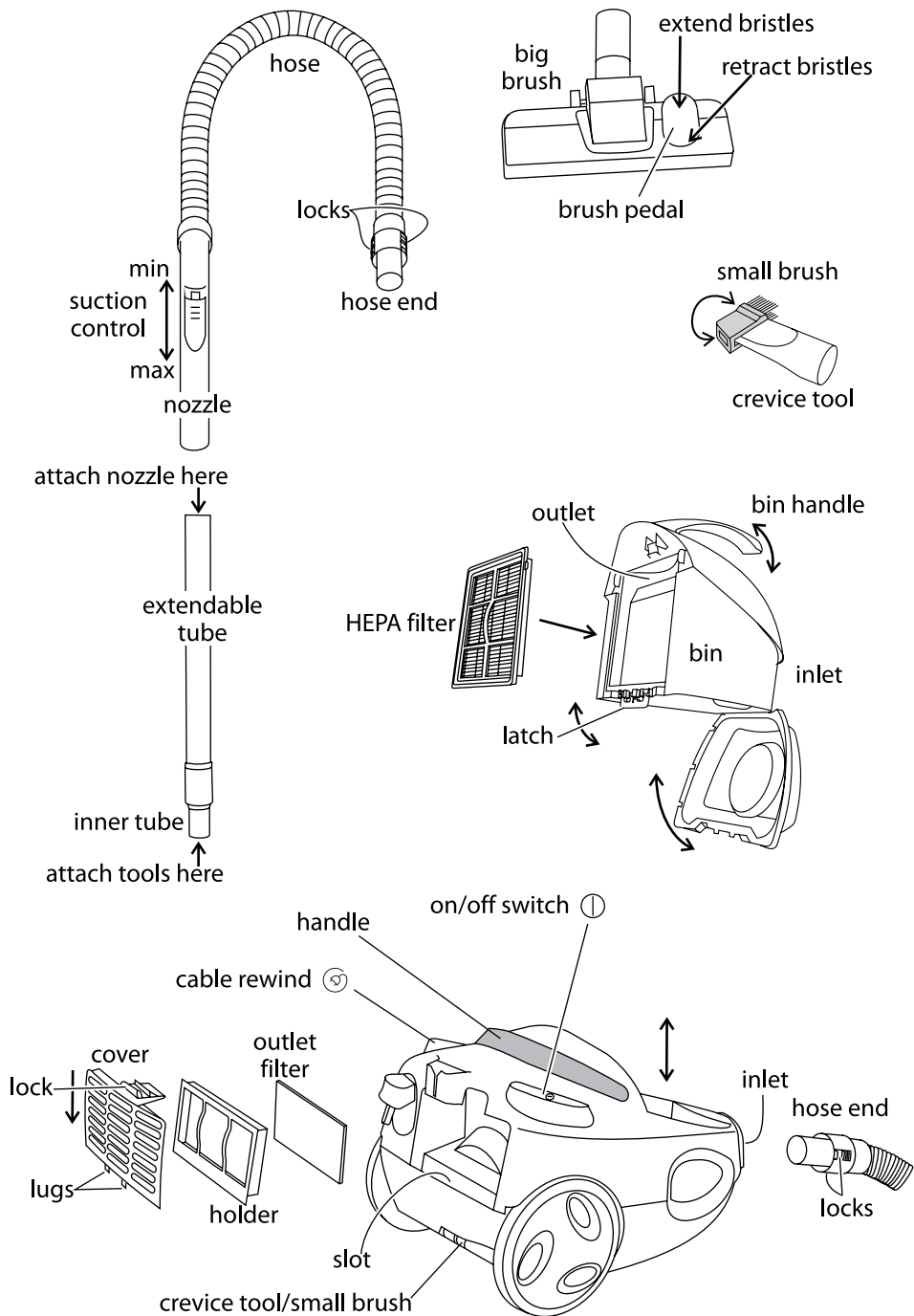
Problems?

Don't take it back to the shop,
they won't be able to fix it.

Ring the helpline

0845 658 9700

it's a local rate number



Read the instructions before using your vacuum cleaner, and keep them safe.
If you pass the cleaner on, pass on the instructions too.

important safeguards

Follow basic safety precautions, including the ones below. It's quite a list, but most of them are simple common sense.

- 1 The cleaner should only be used by or under the supervision of a responsible adult.
It's not a toy – don't let children play with it.
- 2 Don't put the cleaner in any liquid, and don't use it anywhere damp or wet.
- 3 Don't use the cleaner near a gas, oil (including paraffin), or open fire. The flame may be sucked towards the cleaner, causing a fire hazard.
- 4 Keep hair, clothing, fingers (and toes), away from the end doing the sucking, and from the brush. It won't drag you into the bin, but it may give you a bit of a start.
- 5 Stuff you mustn't pick up:
 - a) don't pick up any liquid – you'll short the motor
 - b) don't pick up stuff that may ignite spontaneously, like matches, bits of fire-lighter
 - c) don't pick up anything burning or smouldering, like cigarette ends, ashes, or embers – wait till they're extinguished and cold
 - d) don't pick up spillage from toner cartridges – the fine carbon particles may pass through the filter, short circuit the motor, and burn it out
 - e) don't pick up cement or plaster dust – they'll combine with moisture in the air, clog the filter, scour the bin, and maybe burn out the motor too
 - f) don't pick up anything sharp – you may puncture the filter and damage the motor
 - g) don't pick up anything biological – you'll eventually have to clean it off the filter, and there's always the possibility that viral particles may pass through the filter, reach the air outlet, and enter your air supply
- 6 If you use the cleaner outdoors (e.g. cleaning the car), connect it to the electricity supply via a residual current device (RCD), with a rated residual operating current not exceeding 30mA. Don't let the cleaner get wet.
- 7 Don't leave it unattended when plugged in.
- 8 Keep an eye on the cable, so it doesn't catch on anything, or trip anyone up. Don't run the cleaner over the cable, you'll damage it.
- 9 If you're using the cleaner on stairs, sit it where it can't topple, and keep it below you, so if it does topple, it won't land on you.
- 10 Don't use the cleaner on people, animals, birds, or pets.
- 11 Unplug the cleaner and rewind the cable when not in use, before moving and before cleaning.
- 12 Don't use the cleaner if the bin is full – switch off, unplug, and empty it.
- 13 Don't use the cleaner for any purpose other than those described in these instructions.
- 14 Don't use accessories or attachments other than those we provide.
- 15 Don't leave the cleaner in sunlight, prolonged exposure to UV may damage plastics.
- 16 Don't use the cleaner if it's damaged or malfunctions. If the cable or plug is damaged, return the cleaner, to avoid hazard.

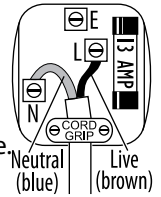


household use only

connection

The cleaner doesn't need an earth. It has a 13A BS1362 fuse in a 13A BS1363 plug. To replace the plug, fit the blue wire to N, and the brown wire to L. Fit the cord grip. If in doubt, call an electrician.

Don't use a non-rewireable/moulded plug unless the fuse cover is in place. If you remove the plug, dispose of it.



before using for the first time

Remove the packaging, but keep it till you're sure the cleaner is working properly.

filters

It's vital you keep the filters clean. If the filters get blocked, you'll lose suction rapidly. We've made them easy to remove, and easy to clean – the rest is down to you.

count the bits

In the box you'll find a big brush, hose (with nozzle), extendable tube and crevice tool/small brush. They may be packed separately, so check the packaging before you dispose of it. The crevice tool/small brush may be mounted in its slot between the wheels.

fitting the hose

- 1 Turn the hose end, to align the locks on either side with the notches in the inlet.
- 2 Push the hose end into the inlet. You'll hear a click as it locks into position.
- 3 Give it a gentle tug to check it's fitted properly.

cable

- 4 Pull as much cable as you need from the back of the cleaner.
- 5 There's a yellow band round the cable to show there's about a metre left.
- 6 There's a red band about half a metre later. This means "Stop pulling, you've run out of cable!" If you're very strong, and you keep pulling, you could probably haul the cable right out of the cleaner – this is not a good idea.
- 7 Keep an eye on the cable so it doesn't catch on anything, and doesn't trip anyone (including you).

carrying and moving the cleaner

- 8 Lift the cleaner only by the handle – don't use the bin handle, you'll just remove the bin (this won't do any harm, but it may cause some merriment among onlookers).
- 9 When you lower the cleaner, make sure it's sitting on the floor before you let the handle go – this might sound obvious, but with such a small cleaner you might be tempted to drop it a little, instead of bending all the way down to the floor. Don't, you'll damage it.
- 10 When the cleaner is sitting on its wheels (normal position), you can move it around by pulling gently (that's gently), on the hose.
- 11 For stationary jobs like curtains, sit the cleaner on its back, with the inlet uppermost, but don't try to move it around like this, it'll fall over.

choose the tool for the job

- 12 The big brush and crevice tool/small brush will fit on the nozzle, or on the end of the extendable tube. The extendable tube fits on the end of the nozzle.

13 You'll have your own preferences, but here are few tips for the first time user.

big brush used with the extension tubes, for floors and carpets.

Press the rear of the brush pedal to extend the bristles for hard floors, or floor coverings without pile.

Press the front of the brush pedal to retract the bristles for use on rugs, carpets, and anything with pile.

crevice tool as the name implies, down the sides of upholstery, in awkward spaces, nooks, and crannies nothing else can reach.

small brush use it to remove pet hair, lint, and dust from blinds, curtains, and upholstery; to brush/clean awkward corners.

14 The small brush is part of the crevice tool. To use, turn it a bit more than 90° from the crevice tool, to store, turn it back, parallel to the crevice tool. It can be stored in a niche at the rear of the cleaner.

tubes

15 Fit the extendable tube for floors, carpets, or for those hard to reach places:

a) grip the end of the inner tube in one hand, the outer tube in the other

b) turn your right hand quarter of a turn anti-clockwise to unlock the tubes

c) move the inner tube in or out to the length you require

d) turn your right hand quarter of a turn clockwise to lock the tubes

16 Push the wide end of the extendable tube on to the nozzle.

17 Choose a tool, and push it onto the narrow end of the tube.

suction control

18 The suction control is on the nozzle – move it towards the nozzle for maximum suction, away from the nozzle to reduce suction.

plug in

caution If you've accidentally pressed the on/off switch, the cleaner could come on when you plug it in. This could give you a bit of a start, so be careful.

19 Plug the cable into a socket near the area to be cleaned (switch the socket on, if it's switchable).

switching on

20 Press and release the on/off switch ①, to turn the cleaner on.

cleaning

21 Move the tool over the surface, cleaning a small area at a time.

22 When you move to a new area, overlap the previous area, to make sure none of the surface is missed.

switching off

23 If you've finished, if you want to change tools, or if you just want to stop, press and release the on/off switch ①, to turn the cleaner off.

finished cleaning?

24 Press and release the on/off switch ①, to turn the cleaner off.

25 Unplug the cleaner.

26 Stand clear of the cable, and press the cable rewind button, the cable will rewind back into the cleaner.

- 27 Keep clear of the cable, as it rewinds at a fair lick. If it catches on anything, stop pressing, and it'll stop rewinding.
- 28 We've tried not to make it too powerful, to avoid wrecking your home, so you may need to push the plug end into the storage area manually.

removing and emptying the bin

- 29 You don't have to empty the bin after each use, but it's a very good idea. Your cleaner will happily work till it's chock full, but you'll be wasting energy swirling yesterday's dust around. Energy that could be better used sucking up today's dust.
- 30 Switch off, unplug, and leave it for a minute, to let the dust settle.
- 31 Squeeze the locks on the hose end, and pull the hose out of the cleaner – this'll keep the hose out of your way.
- 32 Steady the cleaner with one hand. Use the other hand to raise the bin handle, then lift the bin up and out of the cleaner.
- 33 Lower the bin into your dustbin so it's below the rim – this'll stop the dust dispersing into your environment.
- 34 Pull the bottom of the latch away from the bin. The bottom of the bin will drop open, and the contents will drop into the dustbin.
- 35 Tap the bin lightly (over the dustbin) to dislodge any remaining dust.
- 36 Check the inlet for blockages, if there are any, give the bin a few taps to dislodge it. It's also a good idea to check the filter at this point (see "check the filters", below).
- 37 Lift the bottom of the bin to close it, and press the latch over the lugs on the edge of the bin bottom, to lock it closed.
- 38 Lower the bin into the cleaner, and lower the bin handle, to secure it.
- 39 Attach the hose to the cleaner.

check the filters

While emptying the bin give the filters a quick check. Blocked filters quickly reduce suction, and they're easy to clean.

HEPA filter

This filters the returning airflow. It's expensive to replace, so be gentle with it. With careful handling, it should last for years.

- 40 Spread out some newspaper - you're going to make a mess.
- 41 Remove the bin from the cleaner.
- 42 Grip the small handle on the back of the HEPA filter and move the filter up about 2mm, to free the tabs at the bottom of the filter from the slots in the bin.
- 43 Tilt the bottom of the filter away from the bin, then lower it, to free the tab at the top of the filter.
- 44 If the filter looks a bit mucky, tap it over the newspaper, to dislodge the dirt.
- 45 If it's very dirty, soak it in warm soapy water for a few minutes, rinse under a running tap, to remove all trace of soap, then let it air dry – don't refit till it's completely dry.
- 46 To replace the HEPA filter, fit the top tab into its slot, push the filter against the back of the bin, then lower it, to engage the bottom tabs in their slots.
- 47 Lower the bin into the cleaner.
- 48 Lower the bin handle – this'll lock the bin into the cleaner.

outlet filter

49 Push the lock down, then lift the cover off the cleaner.

50 Pull the outlet filter out of the cover.

51 If the filter looks a bit mucky, tap it over the newspaper, to dislodge the dirt.

52 If its very dirty, soak it in warm soapy water, swill it out under a running tap, to remove all trace of soap, then let it air dry, till it's completely dry, before refitting.

53 Put the filter into the rear of the holder – the white side of the filter should be towards the cleaner.

54 Fit the holder and filter into the rear of the cleaner.

55 Fit the lugs in the bottom of the cover into the slot in the cleaner, and push the top of the cover into the cleaner, till it clicks into place.

cleaning

Switch the cleaner off and unplug it before cleaning.

Don't put any part of the cleaner in a dishwasher.

Don't use harsh or abrasive cleaning agents or solvents.

timing

- Clean the cleaner frequently. Basically, the better you look after it, the longer it'll last. Keep an eye on it as you use it, and examine the filters when you empty the bin. If anything needs cleaning, do it there and then, don't put it off, in case you forget.
- Wipe external surfaces with a damp cloth. A dab of washing-up liquid will remove stubborn stains, but clean it off afterwards, or it may stain.
- Wipe the tools with a damp cloth, or hand wash in warm soapy water. Rinse to remove any trace of soap, and air dry before using.
- Wipe the extendable tube and hose with a damp cloth. Again, you can use a dab of washing-up liquid to remove any stubborn marks. Remove all trace of the washing-up liquid, and check they're dry before refitting. Don't put them in water, you'll damage them.
- Hand wash the bin in warm soapy water. Use a washing-up cloth or a gentle sponge, don't use a hard sponge or scouring pad. Rinse to remove all trace of soap and air dry. Don't replace it till it's fully dry.

blockages

No matter how careful you are, sooner or later you'll block the cleaner.

don't panic!

If the cleaner starts to get noisy and you start to lose suction, don't worry, it's not the end of the world, you've probably just blocked it up.

- 1 Switch the cleaner off and unplug it.
- 2 Spread a newspaper on the floor, you're going to make a mess.
- 3 If you're using one of the tools, remove and check it first.
- 4 Pull the hose out and check it – leave it out for the next bit.
- 5 Open the lid, remove the bin, and check the inlet and outlet.
- 6 Use something blunt, like the blunt end of a ball-point pen to dislodge any blockage.
- 7 Check all the filters.
- 8 If you haven't cleared the blockage by now, try again.
- 9 Still not clear? – Ring the helpline.

help – 0845 658 9700

If you need help, note the Model No (on the rating plate) and ring the helpline 0845 658 9700 (it's a local rate number).

spare parts

Note the Model No (on the rating plate) and the part(s) you need, then ring the helpline – 0845 658 9700, or email service@saltoneurope.com for price(s). You may then order spares with VISA or MASTERCARD.

service

If you ring Customer Service, please have the **Model No.** to hand, as we won't be able to help you without it. It's on the rating plate (usually underneath the product).

The cleaner isn't user-serviceable. If it's not working, read the instructions, check the plug fuse and main fuse/circuit breaker.

If that doesn't solve the problem, don't take the cleaner back to the place you bought it – they won't be able to fix it. Ring Customer Service.

If they advise you to return the product to us, pack it carefully, include a note with your name, address, day phone number, and what's wrong. If under guarantee, say where and when purchased, and include proof of purchase (till receipt). Send it to:

Customer Service, Salton Europe Ltd, Failsworth, Manchester M35 0HS

email: service@saltoneurope.com

telephone: 0845 658 9700 (local rate number)

guarantee

Defects affecting product functionality appearing within one year of purchase will be corrected by replacement or repair provided the product is used and maintained in accordance with the instructions. Your statutory rights are not affected. Documentation, packaging, and product specifications may change without notice.

wheelie bin symbol

To avoid environmental and health problems due to hazardous substances in electrical and electronic goods, appliances marked with this symbol mustn't be disposed of with unsorted municipal waste, but recovered, reused, or recycled.

