

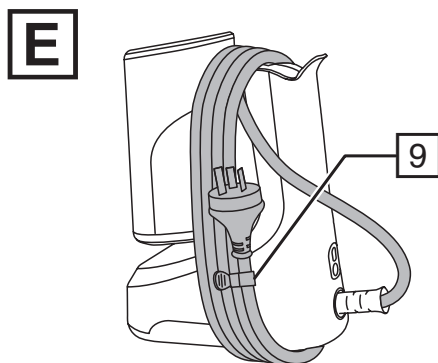
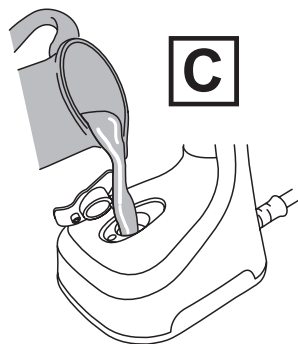
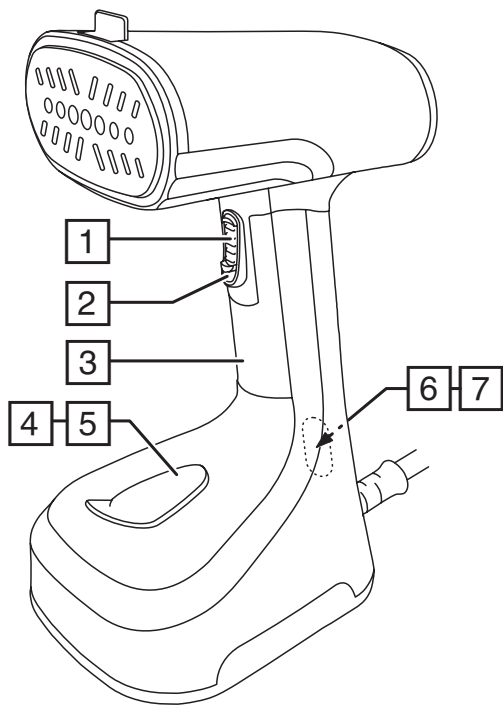
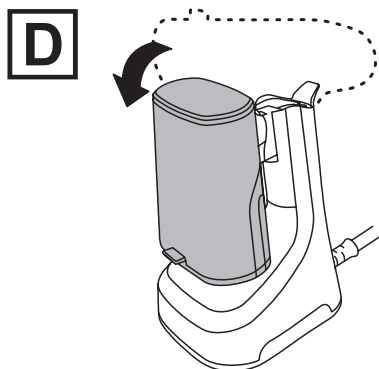
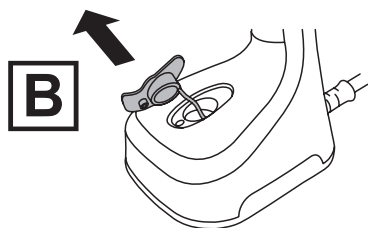
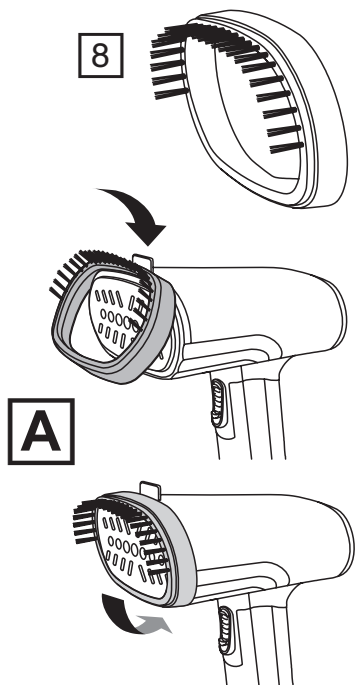


Russell Hobbs

A BRITISH ICON SINCE 1952

RHC2674

www.russellhobbs.com.au
www.russellhobbs.co.nz



IMPORTANT SAFEGUARDS

When using electrical appliances, basic safety precautions should always be followed, including:

1. Do not use outdoors or in damp or moist areas.



Do not immerse in any liquid.



The surfaces of the appliance will get hot during use.

2. Care should be taken when using the appliance due to emission of steam.
3. This appliance is not intended for use by persons (including children) with reduced physical, sensory or mental capabilities, or lack of experience and knowledge, unless they have been given supervision or instruction concerning use of the appliance by a person responsible for their safety.
4. This appliance must be attended whilst plugged in.
5. Ensure the appliance is standing on its heel and with the soleplate clear of any surrounding objects when switching on.
6. Ensure the appliance is unplugged during filling and emptying.
7. Always turn off and unplug from the wall power outlet when not in use.
8. To avoid possible burns, ensure the appliance is off and has cooled before cleaning.
9. To disconnect, turn off the wall power outlet, then grasp and pull the plug from the wall outlet. Never pull by the cord.
10. Do not operate this appliance with a damaged cord/plug or after the appliance has been dropped, is leaking, damaged or has malfunctioned in any manner.
11. Contact Customer Service for examination, adjustment, repair or replacement.
12. There are no user serviceable parts. If repairs are required, they must be performed by the manufacturer or a suitably qualified person in order to avoid a hazard.
13. Do not use on an inclined or unstable surface.
14. Keep the appliance and the power cord away from the edge of tables or countertops and out of reach of children and persons with reduced physical, sensory and mental capacities.
15. Ensure the power cord does not present a tripping hazard.
16. Do not place on or near any heat sources.
17. Follow the instructions when cleaning this appliance.
18. Cleaning or user maintenance shall not be carried out by children without the supervision of a person responsible for their safety.
19. Do not use this appliance for other than its intended purpose.
20. Misuse of the appliance may cause injury.
21. Do not leave the appliance unattended when switched on or where it may be touched by children or persons with reduced physical, sensory and mental capacities while it is still hot.
22. This appliance is not a toy. Children should be supervised to ensure they do not play with the appliance.
23. This appliance is not intended to be operated by means of an external timer or separate remote control system.
24. For added safety, electrical appliances should be connected to a power outlet that is protected by a residual current device (RCD / 'Safety Switch') having a rated residual operating current not exceeding 30mA. Your switchboard may already incorporate an RCD. If unsure, call an electrician for verification and fitting if necessary.
25. This appliance is intended to be used in household and similar applications such as:
 - staff kitchen areas in shops, offices and other working environments;
 - by clients in hotels, motels and other residential type environments;
 - bed and breakfast type environments;
 - farm houses.

SAVE THESE INSTRUCTIONS

PARTS

- | | |
|-----------------------|----------------------|
| 1. Steam trigger lock | 6. Power button |
| 2. Steam trigger | 7. Light |
| 3. Handle | 8. Fabric attachment |
| 4. Cover | 9. Clip |
| 5. Water inlet | |

BEFORE USING FOR THE FIRST TIME


- Remove labels, stickers and packaging from the appliance.
- Read all instructions and warnings.
- Unfold the steamer before use.
- Note: Any water droplets or condensation inside the water tank are a result of quality testing prior to shipping.

IMPORTANT INFORMATION

- For best performance, we recommend using distilled, purified or filtered water in your steamer. Tap water contains minerals that can build up inside your steamer over time and reduce its efficiency or even cause damage.
- Never use perfumes, oils or other additives.
- Always check the garment's care label before steaming, and always test fabrics for colourfastness in an inconspicuous area. Steamers are not recommended for use on leather, suede, vinyl, plastic, or other materials that are sensitive to steam.
- During use the steamer and accessories will become HOT. Never try to fit or remove attachments while still hot.
- After preheating, prime the water pump by holding the steam trigger until steam forms.
- It is normal to feel or hear the water pump inside the device. It may become louder when the water level in the tank is low. Check and refill the tank when required.
- Small amounts of dripping might occur during use. If excessive, your steamer needs time to get back up to full temperature. Just allow the steamer a minute to reheat.
- Wearing clothes immediately after ironing or steaming can actually create wrinkles. Always allow the clothing to cool for about 5 minutes before wearing.

ATTACHMENTS

Fabric attachment

Use on garments labelled  that allow the use of steam. Tip: For items with printing/embellishment, turn the garment inside out to avoid damage to sensitive areas.


Fitting/Removing (Fig. A)

1. Make sure that the steamer and attachment are cool.
2. Hook the top of the attachment over the top edge of the steamer. **Click the bottom edge into place. Make sure it is fully fitted and not loose or it may detach itself during use.**
3. Remove the attachment using the tab. When removing the attachment, watch out for condensation that may have built up during use.

FILLING

1. Place the steamer on its base on a stable surface.
2. Open the cover (Fig. B).
3. Pour slowly, to let the air in the reservoir escape, otherwise you'll cause an air lock and the water will overflow (Fig. C).
4. Don't fill past the max marking or water will escape in use.
5. Wipe up any spillage.
- To refill at any time during use, turn the steamer off by pressing the power button until the indicator light goes out, unplug from outlet, and follow the above procedure.
- After refilling, allow to reheat for 45 seconds and then prime the pump by holding the steam trigger until steam forms.

USING

- If the label says "do not steam" or shows this icon , do not steam the garment.
1. Hang the garment in an area that will not be affected or damaged by the heat and steam, such as on a shower curtain rail, or in an open doorway.
 2. Plug the steamer in then press the power button. The power button light will slowly flash, indicating that the steamer is heating.
 3. After about 45 seconds the power light will stay on, indicating the steamer is preheated.
 4. Prime the water pump by holding steam trigger until steam forms.
 5. To generate steam, press the steam trigger. As long as the trigger is held, steam will emit from the steamer. When the trigger is released, the steam will stop.
 - To generate a constant flow of steam without holding the trigger, press the steam trigger and then slide the steam trigger lock downwards. You can then release pressure on the steam trigger. To turn the steam off, press the trigger, slide the steam trigger lock upwards, then release the trigger.
 6. With your free hand keep the fabric taut. Steam the garment with slow, downward strokes, keeping the head of the steamer in contact with the fabric.
 7. When you have finished, press and hold the power button until the light goes out (about 3 seconds) and unplug.
 8. Stand the steamer on its base and allow it to completely cool off before storing. To avoid mineral buildup, empty the tank after each use.

Auto shut off

Your steamer will automatically switch to auto shut-off mode after being left inactive for 15 minutes. The power button light will flash rapidly to indicate this. To resume steaming, press the steam trigger or power button and wait for your steamer to fully reheat.

AFTER USE AND STORING

CAUTION: Allow the appliance to fully cool before storing.

1. Make sure steamer is off, unplugged and completely cool.
2. Wipe all surfaces with a clean damp cloth.
3. After the steamer has been thoroughly dried, turn it back on and lightly steam over an old cloth. This will help remove any residue left in the steam holes.
4. To avoid mineral buildup, empty the tank after each use.
- For storage purposes it is possible to fold the steamer by pushing the head downwards (Fig. D).
- The cord can be wrapped around the heel of your steamer for storing. Use the clip to secure the last section of cord as shown (Fig. E).

Cleaning attachments

- Wipe with damp cloth to clean.

TROUBLESHOOTING

Problem	Possible Cause	Solution
The steamer is plugged in but not heating.	The auto shut-off has activated.	Press the steam trigger or press the power button to activate the steamer.
Not enough steam or no steam is coming out of the steamer.	The steamer is not heated to full temperature.	Always allow steamer to preheat at least 45 seconds, or until the power button light stops flashing.
	There is not enough water in the water tank.	Fill the water tank.
	The water pump hasn't been primed.	After preheating, always prime the water pump by holding the steam trigger until steam forms.
Discoloured water is coming through the holes and staining the fabric.	Residue has built up in the water tank.	Empty the water tank after each use. Only use distilled, filtered, or purified water.
	Perfumed or scented additives were used.	Never use perfumed or scented additives.
Steamer is leaking or spitting.	Steamer is not hot enough.	Allow the steamer to heat for about 45 seconds.
	Water tank is running low.	Fill the water tank.

Spectrum brands Australia Pty Ltd

Locked Bag 3004 Braeside
Victoria 3195 Australia

Customer Service in Australia

TollFree: 1800 623 118
Email: info@spectrumbrands.co.au
Website: www.spectrumbrands.com.au

Spectrum Brands New Zealand Ltd

PO Box 9817 Newmarket
Auckland 1149 New Zealand

Customer Service in New Zealand

TollFree: 0800 736 776
Email: service@spectrumbrands.co.nz
Website: www.spectrumbrands.co.nz

Spectrum Brands Australia Pty Ltd and Spectrum Brands New Zealand Ltd Warranty Against Defects

In this warranty:

Australian Consumer Law means the Australian consumer law set out in Schedule 2 to the Competition and Consumer Act 2010;

CGA means the New Zealand Consumer Guarantees Act 1993;

Goods means the product or equipment which was accompanied by this warranty and purchased in Australia or New Zealand, as the case may be;

Manufacturer, We or us means:

1. for Goods purchased in Australia, Spectrum Brands Australia Pty Ltd ABN, 78 007 070 573;
or
2. for Goods purchased in New Zealand, Spectrum Brands New Zealand Ltd, as the case may be,
contact details as set out at the end of this warranty;

Supplier means the authorised distributor or retailer of the Goods that sold you the Goods in Australia or in New Zealand; and

You means you, the original end-user purchaser of the Goods.

1. Our goods come with guarantees that cannot be excluded under the Australian Consumer Law, or the CGA. You are entitled to a replacement or refund for a major failure and compensation for any other reasonably foreseeable loss or damage. You are also entitled to have the goods repaired or replaced if the goods fail to be of acceptable quality and the failure does not amount to a major failure.
2. The benefits provided by this Warranty are in addition to all other rights and remedies in respect of the Goods which the consumer has under either the Australian Consumer Law or the CGA. The original purchaser of the Goods is provided with the following Warranty subject to the Warranty Conditions:
3. We warrant the Goods for all parts defective in workmanship or materials for a (Warranty Period) period of 2 years from the date of purchase.

If the Goods prove defective within the Warranty Period by reason of improper workmanship or material, we may, at our own discretion, repair or replace the Goods without charge.

Warranty Conditions

1. The Goods must be used in accordance with the manufacturer's instructions. This Warranty does not apply should the defect in or failure of the Goods be attributable to misuse, abuse, accident or non-observance of manufacturer's instructions on the part of the user. As far as the law permits, the manufacturer does not accept liability for any direct or consequential loss, damage or other expense caused by or arising out of any failure to use the Goods in accordance with the manufacturer's instructions.
2. Exhaustible components (such as batteries, filters and brushes) of the Goods are included under this Warranty only where there is a defect in workmanship or materials used.
3. The warranty granted under clause 3 is limited to repair or replacement only.
4. Any parts of the Goods replaced during repairs or any product replaced remain the property of the manufacturer. In the event of the Goods being replaced during the Warranty Period, the warranty on the replacement Goods will expire on the same date as for the Warranty Period on the original Goods which are replaced.
5. In order to claim under the warranty granted under clause 3 you must:
 - (a) Retain this warranty with your receipt/proof of purchase; and
 - (b) Return the Goods to us at the relevant address or to the Supplier by prepaid freight within the Warranty Period accompanied with (i) the legible and unmodified original proof of purchase, which clearly indicates the name and address of the Supplier, the date and place of purchase, the product name or other product serial number and (ii) this warranty.
6. This warranty is immediately void if:
 - (a) Any serial number or appliance plate is removed or defaced;
 - (b) The Goods have been serviced or otherwise repaired by a person not authorised to do so by us or where non approved replaced parts are used.
7. The Goods are designed for domestic use only. The Goods must be connected to the electrical voltage requirements as specified in the ratings label located on the Goods.
8. This warranty does not cover the cost of claiming under the warranty or transport of the Goods to and from the Supplier or us.
9. This warranty is only valid and enforceable in Australia against Spectrum Brands Australia Pty Ltd and in New Zealand against Spectrum Brands New Zealand Ltd.

Contact us or the Supplier for further details.

Register your product online

If you live in Australia please visit: www.spectrumbrands.com.au/warranty

If you live in New Zealand Please visit: www.spectrumbrands.co.nz/warranty

Registration of your warranty is not compulsory, it gives us a record of your purchase AND entitles you to receive these benefits: Product information; Hints and tips; Recipes and news; Information on special price offers and promotions.

Any questions? Please contact Customer Service for advice.