

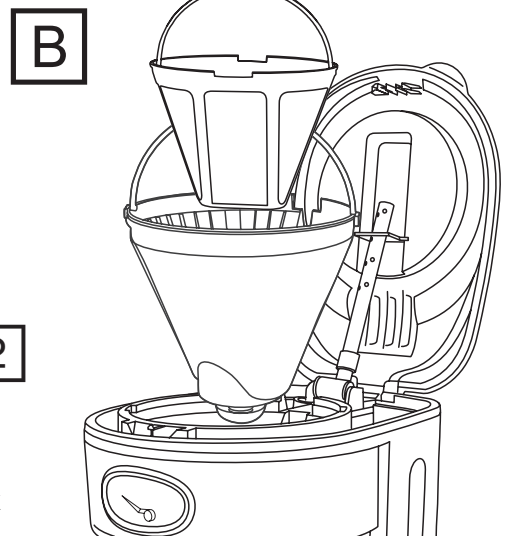
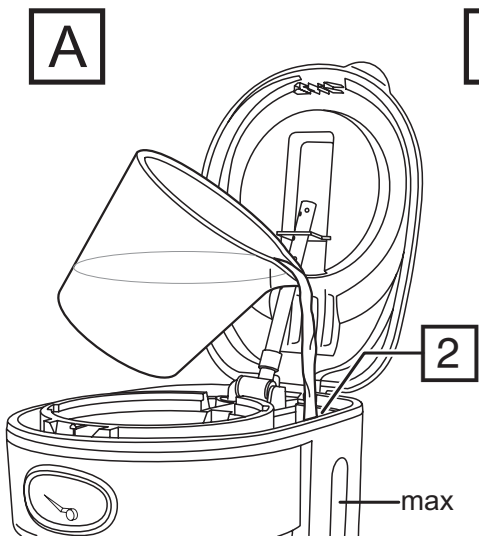
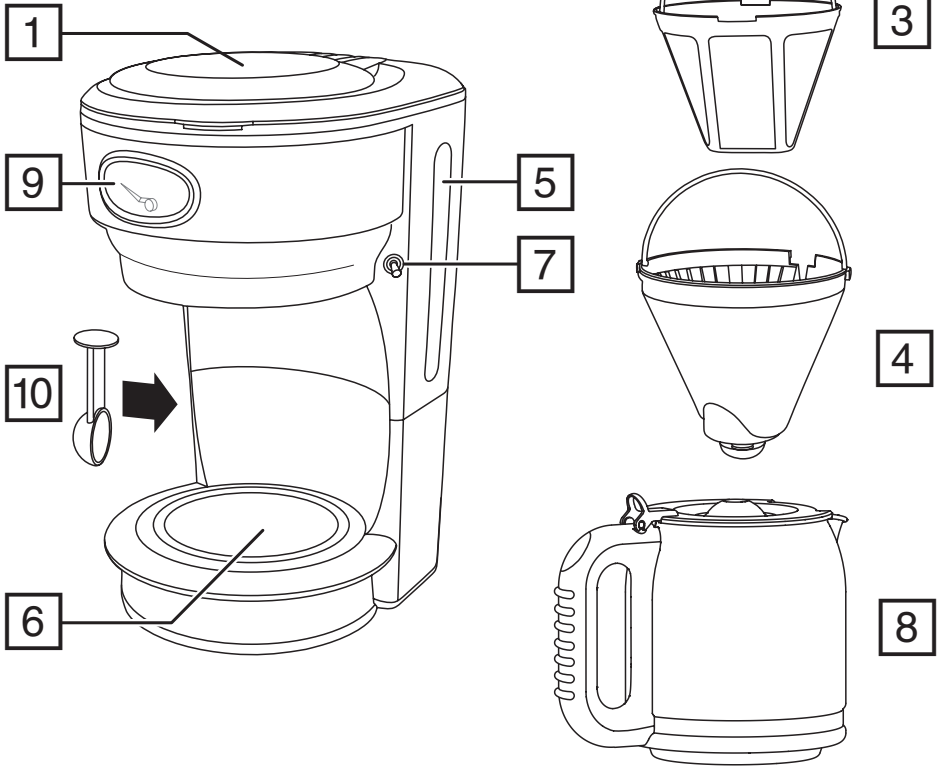


Russell Hobbs



instructions

£10,000 prize draw
EXTRA year guarantee
FREE rewards gallery
www.russellhobbs.co.uk/productregister/
Register online now!
See back for details



Read the instructions, keep them safe, pass them on if you pass the appliance on. Remove all packaging before use.

IMPORTANT SAFEGUARDS

Follow basic safety precautions, including:


This appliance can be used by children aged from 8 years and above and persons with reduced physical, sensory or mental capabilities or lack of experience and knowledge if they have been supervised/instructed and understand the hazards involved.

Children shall not play with the appliance.

Cleaning and user maintenance shall not be done by children unless they are older than 8 and supervised.

Keep the appliance and cable out of reach of children under 8 years.

Misuse of the appliance may cause injury.

 The surfaces of the appliance will get hot. Residual heat will keep the surfaces hot after use.

Don't immerse the appliance in liquid.

If the cable is damaged, it must be replaced by the manufacturer, its service agent, or someone similarly qualified, to avoid hazard.

- Sit the appliance on a stable, level, heat-resistant surface.
- Keep the appliance and cable away from the edges of worktops.
- Don't use accessories or attachments other than those we supply.
- Don't use the appliance for any purpose other than those described in these instructions.
- Don't use the appliance if it's damaged or malfunctions.

HOUSEHOLD USE ONLY

PARTS

- | | |
|---------------------|-------------------------|
| 1. Lid | 6. Hot plate |
| 2. Water reservoir | 7. On/off switch |
| 3. Permanent filter | 8. Carafe |
| 4. Filter holder | 9. Brewing status gauge |
| 5. Water gauge | 10. Scoop |

BEFORE USING FOR THE FIRST TIME

Fill the reservoir to the max mark, and run the appliance without coffee.

FILLING

1. Remove the carafe from the rest.
2. Open the lid.
3. Fill with at least 2 cups of water, but not above the max mark (FIG A).
4. Fit the permanent filter into the filter holder (FIG B).
5. Put 1 scoop of filter-ground coffee into the filter for each cup.
6. Close the lid.
7. Replace the carafe on the rest.

MAKING COFFEE

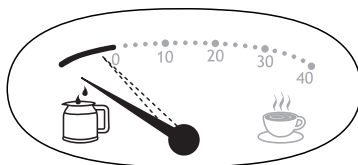
CAUTION: DO NOT open the lid during brewing as there is the potential risk of scalding.

1. Put the plug into the power socket.
2. Move the switch to **I**. The light will come on.
3. Shortly afterwards, coffee will start to drip into the carafe.
4. When it's done, the hotplate will keep the carafe warm. After 40 minutes, the hotplate and appliance will shut down.
5. Move the switch to **O**.
6. Unplug, and let the appliance and carafe cool down fully before cleaning, or for about 10 minutes before refilling.
7. For the best flavour, drink the coffee within 40 minutes of brewing.

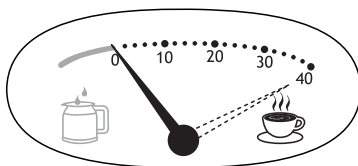
BREWING STATUS GAUGE

The gauge shows the status of your coffee machine.

- The pointer will first show the brewing stage as your coffee is being made. The pointer will move slowly clockwise within the first (long) segment during brewing.



- Once brewing has finished, the pointer will move to the **0** marking. It will then show, in minutes, how long the coffee has been kept warm by the hot plate (0 to 40 mins). After about 40 minutes, chemical changes will affect the taste of the coffee.



- When the appliance shuts down, the pointer will move to the rest position.

A QUICK CUP

You can remove the carafe at any time. To prevent the filter holder overflowing, replace the carafe on the hotplate within about 20 seconds.

CARE AND MAINTENANCE

1. Unplug the appliance and let it cool.
2. Tip the contents of the filter holder into the bin.
3. Clean the outside surfaces of the appliance with a damp cloth.
4. Hand wash the carafe, permanent filter and filter holder.
5. With the filter holder oriented as shown in FIG B, lower it into the coffee maker. The lid will not close unless the filter holder is correctly fitted.
6. Close the lid, and press down to lock it.

DESCALE REGULARLY

Descale the appliance at least monthly with a proprietary descaler. Follow the instructions on the package of descaler.

Products returned under guarantee with faults due to scale will be subject to a repair charge.



ENVIRONMENTAL PROTECTION

To avoid environmental and health problems due to hazardous substances in electrical and electronic goods, appliances marked with this symbol mustn't be disposed of with unsorted municipal waste, but recovered, reused, or recycled.



ENVIRONMENTAL PROTECTION

To avoid environmental and health problems due to hazardous substances in electrical and electronic goods, appliances marked with this symbol mustn't be disposed of with unsorted municipal waste, but recovered, reused, or recycled.

SERVICE

If you ring Customer Service, please have the **Model No.** to hand, as we won't be able to help you without it. It's on the rating plate (usually underneath the product).

The product isn't user-serviceable. If it's not working, read the instructions, check the plug fuse and main fuse/circuit breaker. If it's still not working, consult your retailer.

If that doesn't solve the problem – ring Customer Service – they may be able to offer technical advice.

If they advise you to return the product to us, pack it carefully, include a note with your name, address, day phone number, and what's wrong. If under guarantee, say where and when purchased, and include proof of purchase (till receipt). Send it to:

Customer Service

Spectrum Brands (UK) Ltd

Fir Street, Failsworth, Manchester M35 0HS

email: support@russellhobbs.com

telephone: 0845 658 9700 (local rate number)

GUARANTEE

Defects affecting product functionality appearing within two years of first retail purchase will be corrected by replacement or repair provided the product is used and maintained in accordance with the instructions. Your statutory rights are not affected. Documentation, packaging, and product specifications may change without notice.



ONLINE/SPARES

www.russellhobbs.co.uk for more products and/or spares



REGISTER ONLINE FOR –



£10,000 prize draw,

EXTRA year guarantee,

FREE rewards gallery

Visit www.russellhobbs.co.uk/productregister/

You must register within 28 days of purchase.