

REMINGTON®
EST. NEW YORK 1937

G2 GRAPHITE SERIES MULTI GROOM KIT

**USE & CARE
MANUAL**

PLEASE READ
PRIOR TO USE



To register your product go to
www.remington-products.com.au
www.remington.co.nz

3 YEAR WARRANTY

PG2000AU

IMPORTANT SAFETY INSTRUCTIONS

When using electrical appliances, basic precautions should always be observed, including the following.

READ ALL INSTRUCTIONS BEFORE USING

DANGER: As with most electrical appliances, electrical parts are electrically live even when the switch is off.

For additional protection, the installation of a residual current device (rcd) having a rated residual operating current not exceeding 30 mA is advisable in the electrical circuit supplying the bathroom. Ask your installer for advice.

KEEP AWAY FROM WATER

WARNING: TO REDUCE THE RISK OF BURNS, ELECTROCUTION AND FIRE OR INJURY TO PERSONS

- Do not place or store the appliance or charging adaptor where it can fall or be knocked into a sink or bath.
- Do not place in or drop into water or any other liquid.
- If an appliance falls into water, “unplug it” immediately. Do not reach into the water.
- Unplug the charging adaptor from the electrical outlet immediately after fully charging.
- Do not use while bathing or in the shower.
- Unplug and switch off this appliance before cleaning it.
- Use this appliance only for its intended use as described in this manual.
- Do not use attachments not recommended by Remington.
- Never drop or insert any object into any opening of this appliance.
- Keep the cord away from heated surfaces.
- Do not use this appliance with a damaged or broken trimming attachments as injury may occur.
- Always store the charging adaptor in a moisture-free location.
- For household use only.
- This appliance should not be used by children or other persons with reduced physical, sensory or mental capabilities or lack of experience and knowledge unless they have been given supervision or instruction concerning use of the appliance in a safe way and understand the hazards involved.

- This appliance is not a toy. Children shall be supervised to ensure they do not play with the appliance. Cleaning, use, and maintenance shall not be made by children without supervision.
- Keep the appliance and the power cord away from edge of tables or countertops and out of reach of children and persons with reduced physical, sensory or mental capabilities.
- Do not use on people who are asleep.
- Never operate this appliance if it has a damaged cord or plug, if it is not working correctly, if the charging adaptor has been damaged or dropped into water.
- Do not use an extension cord or a voltage converter with this appliance.
- Do not wrap the cord around the appliance.
- **WARNING:** For recharging the battery, only use the adaptor supplied with the appliance.
- Always replace the adaptor with one of the original type.

WARNING - KEEP THE APPLIANCE DRY

SAVE THESE INSTRUCTIONS

PG2000AU G2 GRAPHITE SERIES MULTI GROOM KIT

USE & CARE INSTRUCTION MANUAL

Thank you for purchasing your Remington® G2 Graphite Series Multi-Grooming Kit. Inside this manual you will find tips on using and caring for your groomer.



KEY PARTS

1. 30mm Trimmer Head
2. Groomer Handle
3. On/Off Switch
4. Charging Indicator Light
5. 1.5mm & 3mm Fixed Comb

6. Nose, Ear, Eyebrow Trimmer Head
7. Adjustable Comb Attachment (2-20mm)

Also Includes:

- Power Adaptor
- Pouch

Note: The Adjustable Comb Attachment has various length settings. When first becoming familiar with your groomer, begin with a higher numbered setting. Adjust cutting length, as desired.

ABOUT YOUR GROOMER

PG2000AU SPECIFICATIONS	
Power System	Cordless (Rechargeable)
Full Charge Time	16 Hours
Run Time	40 Minutes
Indicators	LED
Voltage Type	Worldwide

Voltage Type: Worldwide Voltage - groomer automatically adapts to and outlet voltage between 100V and 240V.

Note: Some countries will require the use of a plug adaptor that is not included with your groomer.

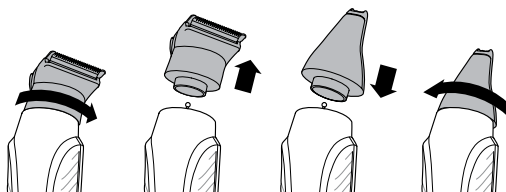
CHARGING

Before using your trimmer for the first time, charge for 16 hours.

1. Ensure the product is switched off.
2. Connect the charging adaptor to the product and then to the mains.
 - When charging, the charge indicator light will light up.
 - Your trimmer cannot be overcharged. However, if it is not going to be used for an extended period of time (2-3 months), unplug it from the mains and store.
 - To preserve the life of your batteries, let them run out every 6 months then recharge for 16 hours.
 - On a full charge, your beard trimmer will run for up to 40 minutes of cordless usage.

ATTACHING AND REMOVING THE GROOMING HEADS

- Ensure that the groomer is switched off before fitting or removing heads.
- To remove, rotate the head anti-clockwise until it unlocks and then lift off.
- To fit, place the desired head on top of the groomer and rotate head clockwise to lock into place.



ATTACHING AND REMOVING ADJUSTABLE COMB ATTACHMENT

- The Adjustable Comb attachment has 10 Length settings: 2-20mm (in increments of 2mm). Begin with a higher numbered setting. Adjust cutting length as desired once you are familiar with using the groomer, it is better to select a longer hair length setting in order not to trim too much hair.
- To fit, line up the rails on the comb with the slots on the sides of the groomer and slide the comb downwards onto the groomer.
- To adjust, press and hold the adjustment button on the back of the comb and slide the comb up or down. Release the button to lock the comb at that position. The length of cut is indicated by the scale on the side of the groomer.
- To remove, press and hold the adjustment button and push the comb up and off the groomer.

ATTACHING AND REMOVING FIXED COMBS

- To fit, hook the front of the fixed comb over the teeth of the 30mm trimmer head.
- Press the back of the fixed comb down until it clicks into place.
- To remove, lift the tab on the back of the fixed comb upwards until it comes free from the 30mm trimmer head.

GROOMING TIPS

Hair Clipping: 30mm Trimmer Head With Adjustable Comb (2-20mm)

- Hair should be dry and free of lotions or other liquids.
- Comb outward to obtain maximum height / length and facing in the same direction.

Step 1: Nape of the neck

1. Using a hand-held mirror is necessary if self-trimming.
2. Fit the 30mm trimmer head and adjustable comb.
3. Set the adjustable comb to 4 mm or 6 mm.
4. Hold the groomer with the blade teeth pointing upwards. Begin starting at the centre of the head at the base of the neck.
5. Slowly lift the groomer, working upwards and outwards through the hair, trimming just a little at a time.

Step 2: Back of the head

- With the adjustable comb set at 12 mm or 18 mm, cut the hair at the back of the head.

Step 3: Side of the head

1. Adjust the comb to a shorter length setting for the areas around the ears.
2. Increase the length setting on the adjustable comb to gradually transition the length of hair on the side of the head to the longer hair on the top of the head.

Step 4: Top of the head

1. Adjust the comb to the longer length settings (up to 20 mm) then cut the hair on top of the head against the direction in which the hair normally grows.
2. Always work from the back of the head.

Trim the sideburns

- To trim sideburns, adjust the comb to the desired length setting, or use one of the clips on comb.

3-Day Stubble, and Body Hair Maintenance; 30mm Trimmer Head With 1.5mm or 3mm Fixed Comb

Let your stubble grow to a length that is slightly longer than the look you are trying to achieve.

1. Fit the 1.5 mm fixed comb to the wide trimmer attachment.
2. Run your trimmer through your beard against the direction of hair growth.
- For more control over the length of your stubble, you can use the adjustable comb and trim your stubble down in increments starting at a longer length setting until you get the desired look.

Beard / Moustache: 30mm Trimmer Head With Adjustable Comb (2-20mm)

1. Use a small comb to straighten hairs for trimming.
2. Fit the 30mm trimmer head and adjustable comb.
3. Set the adjustable comb to the desired length.
4. Start trimming under the chin following the line of the jaw.
5. Work upwards towards the ear and upper beard line.

Contour Edging: 30mm Trimmer Head

1. Hold the groomer with the cutting blade (teeth) facing you and at 90 degrees to the skin.
2. Start with the edge of the beard/moustache line and, with the blade resting lightly against the skin, use slow controlled movements to create contoured lines.

Close Hair Cutting: 30mm Trimmer Head

1. Use the fingers of one hand to lift the hair at the base of your head up off your neck.
2. Your index finger should be covering the roots of the hairs you are lifting to prevent them from being accidentally cut.
3. Hold the groomer to the base of your neck with the blade facing up. Move the groomer up the neck until it touches your index finger which is protecting the hair roots.
4. Move your groomer slowly and keep the hair roots at the base of your head out of the way of the groomer.

Ears: Nose, Ear, Eyebrow Trimmer Head

1. Fit the nose, ear, eyebrow trimmer head onto the groomer handle.
2. When trimming inner ears, avoid inserting the groomer more than 6mm into ear canal.
3. Turn the groomer on.
4. Insert the groomer's cutting unit gently into the ear canal.
5. Rotate the groomer in a circular motion while gently moving in and out of ear canal.

Eyebrows: Nose, Ear, Eyebrow Trimmer Head

1. Carefully guide the head to remove any stray or longer hairs from the eyebrow.
2. For best results, do not use the groomer to define entire eyebrow.

Nose: Nose, Ear, Eyebrow Trimmer Head

1. Turn the groomer on.
2. Carefully insert the groomer's cutting unit no more than 6mm into nostril.
3. Rotate the groomer in a circular motion while gently moving in and out of nose.

CLEANING, CARE & MAINTENANCE

Note: Always clean the groomer heads and attachment immediately after use to ensure maximum performance and a proper operating life.

Clean Combs and Trimmer Heads With a Soft Brush (not included)

- With the head removed from the handle, gently brush out hair clippings from the cutting system and top of groomer handle.

Clean Heads With Water

- With the head removed from the handle, rinse ONLY under warm running water. Do NOT use hot water as this might cause damage.

Note: The groomer handle should not be rinsed.

Oiling Blades & Cautions

- Rinsing attachments under water will require a re-lubrication of the cutting blades once per month. Using only light grade oils (e.g. sewing machine oil), simply place one or two drops lightly over cutters with fingertip. Wipe away all excess

Note: Do not lubricate the foil shaver with oil as it is permanently lubricated.

BATTERY DISPOSAL

Note: The battery is not intended to be removed or replaced under normal use.

- The PG2000AU contains a nickel metal hydride battery. Once the trimmer has reached the end of its life, to ensure proper disposal of the product, please take the appliance to a recycling centre, where the internal rechargeable battery should be removed by a professional and recycled separately.
- For more information about recycling of electrical and battery operated appliances, please contact your local council office or your household waste disposal service.

Caution: Do not put in the fire or mutilate your batteries when disposing as they may burst and release toxic materials. Do not short circuit as it may cause burns.

We suggest you use local waste management centres to recycle this product at end of life.



This product is not suitable for bath or shower.

This product conforms to radio frequency interference requirements
Any product purchased and used commercially carries a limited 90 Day Warranty.

Spectrum Brands Australia Pty Ltd and Spectrum Brands New Zealand Limited

WARRANTY AGAINST DEFECTS

In this warranty:

Australian Consumer Law means the Australian consumer law set out in Schedule 2 to the Competition and Consumer Act 2010;

CGA means the New Zealand Consumer Guarantees Act 1993;

Goods means the product or equipment which was accompanied by this warranty and purchased in Australia or New Zealand, as the case may be;

Manufacturer, We or us means:

1. for Goods purchased in Australia, Spectrum Brands Australia Pty Ltd ACN, 007 070 573; or
2. for Goods purchased in New Zealand, Spectrum Brands New Zealand Limited, as the case may be, contact details as set out at the end of this warranty;

Supplier means the authorised distributor or retailer of the Goods that sold you the Goods in Australia or in New Zealand; and

You means you, the original end-user purchaser of the Goods.

1. Our goods come with guarantees that cannot be excluded under the Australian Consumer Law, or the CGA. You are entitled to a replacement or refund for a major failure and compensation for any other reasonably foreseeable loss or damage. You are also entitled to have the goods repaired or replaced if the goods fail to be of acceptable quality and the failure does not amount to a major failure.
2. The benefits provided by this Warranty are in addition to all other rights and remedies in respect of the Goods which the consumer has under either the Australian Consumer Law or the CGA. The original purchaser of the Goods is provided with the following Warranty subject to the Warranty Conditions:
3. We warrant the Goods for all parts defective in workmanship or materials for the period of three (3) years from the date of purchase (**Warranty Period**). If the Goods prove defective within the Warranty Period by reason of improper workmanship or material, we may, at our own discretion, repair or replace the Goods without charge.

Warranty Conditions

4. The Goods must be used in accordance with the manufacturer's instructions. This Warranty does not apply should the defect in or failure of the Goods be attributable to misuse, abuse, accident or non-observance of manufacturer's instructions on the part of the user. As far as the law permits, the manufacturer does not accept liability for any direct or consequential loss, damage or other expense caused by or arising out of any failure to use the Goods in accordance with the manufacturer's instructions.
5. Consumable parts (such as shaver heads, cutters and foils) of the Goods are included under this Warranty only where there is a defect in workmanship or materials used.
6. The warranty granted under clause 3 is limited to repair or replacement only.
7. Any parts of the Goods replaced during repairs or any product replaced remain the property of the manufacturer. In the event of the Goods being replaced during the Warranty Period, the warranty on the replacement Goods will expire on the same date as for the Warranty Period on the original Goods which are replaced.

8. In order to claim under the warranty granted under clause 3 you must:
 - (a) Retain this warranty with your receipt/proof of purchase; and
 - (b) Return the Goods to us at the relevant address below or to the Supplier by prepaid freight within the Warranty Period accompanied with (i) the legible and unmodified original proof of purchase, which clearly indicates the name and address of the Supplier, the date and place of purchase, the product name or other product serial number and (ii) this warranty.
9. This warranty is immediately void if:
 - (a) Any serial number or appliance plate is removed or defaced;
 - (b) The Goods have been serviced or otherwise repaired by a person not authorised to do so by us or where non approved replaced parts are used.
10. The Goods are designed for domestic use only. A limited 90-day Warranty applies to any industrial or commercial use of the Goods. The Goods must be connected to the electrical voltage requirements as specified in the ratings label located on the Goods.
11. This warranty does not cover the cost of claiming under the warranty or transport of the Goods to and from the Supplier or us.
12. This warranty is only valid and enforceable in Australia against Spectrum Brands Australia Pty Ltd and in New Zealand against Spectrum Brands New Zealand Limited.

Contact us or the Supplier for further details.

Spectrum Brands Australia Pty Ltd

Locked Bag 3004

Braeside, VIC 3195

AUSTRALIA

Customer service in Australia: 1800 623 118

E-mail: consumer.enquiry@remington-products.com.au

Website: www.remington-products.com.au

Spectrum Brands New Zealand Limited

PO Box 9817

Newmarket, Auckland 1149

NEW ZEALAND

Customer service in New Zealand: 0800 736 776

E-mail: info@remington.co.nz

Website: www.remington.co.nz

REMINGTON®
EST. NEW YORK 1937

REMINGTON SERVICE HOTLINE

①Australia 1800 623 118 (toll free)

②New Zealand 0800 736 776 (toll free)

AUTHORISED REPAIR CENTRES

Visit www.remington-products.com.au for Authorised repair centre details.

® Registered Trade Mark of Spectrum Brands Inc., (SBI) or one of its subsidiaries

© 2020 Spectrum Brands Inc.

Rev. 03/20

Part No. T22-0005662

Type: PG03A

