

# REMINGTON®

EST. NEW YORK 1937

## SMOOTH EPI EPILATOR

**USE & CARE  
MANUAL**

PLEASE READ  
PRIOR TO USE



To register your product go to  
[www.remington-products.com.au](http://www.remington-products.com.au)  
[www.remington.co.nz](http://www.remington.co.nz)

**2 YEAR WARRANTY**

**EP1000AU**

## IMPORTANT SAFEGUARDS

**Warning: Do not use this appliance near bath tubs, showers, basins or other vessels containing water. When using electrical appliances, especially when children are present, basic safety precautions should always be followed, including the following:**

### **READ ALL INSTRUCTIONS BEFORE USING**

### **KEEP THE POWER ADAPTOR AWAY FROM WATER**

**Remington strongly recommends that an approved Safety Switch (residual current device) should protect all bathroom power outlets. Ask an electrical contractor for advice.**

- To prevent accidents keep the appliance away from hair on your head, your eyebrows, eyelashes as well as clothes, brushes and wire.
- Your appliance should never be left unattended when plugged in to a power outlet.
- Always unplug the appliance when it is not in use.
- This appliance should not be used by children or other persons with reduced physical, sensory or mental capabilities or lack of experience and knowledge unless they have been given supervision or instruction concerning use of the appliance in a safe way and understand the hazards involved.
- This appliance is not a toy. Children shall be supervised to ensure they do not play with the appliance. Cleaning and user maintenance shall not be made by children without supervision.
- Use this appliance only for its intended use as described in this manual. Do not use attachments not recommended by Remington.
- Never operate this appliance if it has a damaged cord or plug, if it is not working correctly, if mains adaptor has been dropped or damaged or dropped into water. If the cord of this power adaptor is damaged the power adaptor must be discarded. Handle cord carefully for long life and avoid jerking, twisting or straining especially at plug connections. The cord cannot be repaired.
- Keep the power adaptor cord away from heated surfaces.
- Do not use on people who are asleep.
- Never drop or insert any object into any opening of this appliance.
- Do not use outdoors or where aerosol (spray) products are being used or where oxygen is administered.

- Do not plug or unplug the appliance with wet hands.
- Do not wrap the cord of the power adaptor around the unit.
- Do not use if the tweezers are broken or damaged.

**CAUTION:**

- For your protection your epilator may slow down or even stop if it is pressed too firmly against the skin.
- Do not use the epilator on irritated skin or skin with varicose veins, rashes, spots, moles or wounds without consulting a doctor. People with reduced immune response, for example during pregnancy, or people who suffer from diabetes mellitus, haemophilia or immunodeficiency should consult their doctor before using this appliance.
- For hygiene reasons do not let another person use your epilator. It is recommended for use by one person only.

**SAVE THESE INSTRUCTIONS**

## EP1000AU SMOOTH EP1 EPILATOR

### USE & CARE INSTRUCTION MANUAL

Thank you for purchasing your new Remington® Smooth EP1 Epilator. This epilator will remove hair from the legs, arms, bikini line and underarms leaving your skin feeling soft and smooth.



#### KEY PARTS

1. Gentle lift & grip tweezers
2. Perfect angle cap
3. On/Off button with 2 speed selections

4. Power inlet

#### Also includes:

- Cleaning brush
- Power adaptor

## ABOUT YOUR EPILATOR

EP1000AU SPECIFICATIONS	
Power System	Corded
Voltage Type	AC Adaptor - 100-240V

### GENERAL INFORMATION ON EPILATION

The Remington® Smooth EP1 Epilator has been designed to make the removal of unwanted hairs as efficient, gentle and easy as possible. The epilation head and cap are especially designed to follow the contours of your body that channel fine, short and flat hair into the tweezer discs, leaving the skin silky smooth.

The rotating tweezers remove hair as short as 0.5mm. The hair is pulled out from the root.

If you have not used an epilator before, or if you have not epilated for a long period of time, it may take a short time for your skin to adapt to this type of hair removal system. The discomfort that you feel at first is considerably reduced overtime, as your skin adjusts to the process.

Using an epilator may cause reddening or irritation of the skin. This is a normal reaction and will disappear quickly. However you should contact your doctor if the irritation has not disappeared within 3 days.

All methods of hair removal from the root can result in in-grown hairs depending on the condition of the skin and the hair. Regular exfoliation helps to prevent in-grown hairs.

In some cases inflammation of the skin can occur when bacteria penetrates the skin (when gliding the appliance over the skin). Thorough cleansing of the epilation head and caps after each use will minimise the risk of infection.

## Some Useful Tips

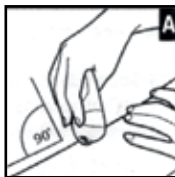
- When using an epilator for the first time, it is best to try it on a small area first. This will help the skin adjust to the process of epilation.
- The optimum length of the hair for epilation is 2 – 5mm. If hairs are longer we recommend that you shave or trim the hair first with a Remington® shaver or a Remington® bikini trimmer and epilate the shorter re-grown hairs after 1-2 weeks.
- Take a warm bath or shower before epilating and exfoliate to remove the dead skin cells. This will ensure that your skin is pliable, making the epilation process less uncomfortable.
- It is advisable to epilate in the evening, so that any possible redness can disappear overnight.
- After using your epilator you can use a body cream or aloe lotion to soothe the skin and reduce irritation.
- Regularly exfoliate after epilation to avoid in-grown hairs.

## HOW TO USE

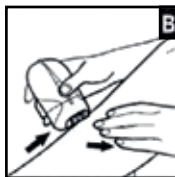
**Note:** This epilator operates in corded mode only.

Before epilating, make sure your skin is clean, dry and free from creams or oils. Ensure that the On/Off switch is in the Off position. Turn the epilator on ensuring that you press the switch lock in with your thumb. Set to the desired speed. Low speed is recommended for fine hair and High speed is recommended for course hair or stronger hair growth.

Using your free hand, hold the skin taut so that the hairs stand upright. Position the epilator so that the stainless steel discs are at a 90° angle and flat against the skin. The Remington® epilator attachment heads are designed to ensure maximum contact to the skin to maximise the hair removal process. (Diagram A)



Glide the epilator in a slow continuous movement against the hair growth. Do not apply pressure as the epilator will slow down or even stop. Repeat until all unwanted hair is removed. After epilating, turn the epilator Off.



### Arm/Leg Epilation

Begin by epilating from the lower arm or leg and slowly move upwards. To epilate behind the elbow or knee keep the arm or the leg straight to stretch the skin. (Diagram B)



### Underarm and Bikini Line Epilation

Please be aware that these areas are particularly sensitive to epilation. However this sensitivity will reduce after repeated usage. For more comfort, ensure that the skin is held taut and the hair is at the optimum length of 2-5mm.

When epilating the underarm keep your arm raised so that the skin is stretched. Directly after epilation avoid using irritating substances, such as deodorants with alcohol. (Diagram C)



When epilating the bikini line hold the skin around the bikini line area taut, and glide the epilator in a circular motion. (Diagram D)

## MONEY BACK OFFER – AUSTRALIA / NEW ZEALAND ONLY

If within 90 days you are not fully satisfied with your Remington® epilator, just return the epilator with this completed coupon and a copy of your Australian/New Zealand purchase receipt to Remington®. In return, we will send you a cheque for the full purchase price of the epilator. Please allow 6-8 weeks for your cheque to arrive.

Name:

Address:

City:

State:  Postcode:  DOB:

Contact No: Area Code:  Ph:

Product Model number:

Is this the first Remington® epilator you have owned/purchased? Yes ☐ No ☐

Why are you returning this epilator?

Skin Irritation ☐ Too painful to continue ☐ Takes too long ☐

Other:

**REMINGTON®**  
EST. NEW YORK 1937

**Spectrum Brands Australia Pty Ltd**

Locked Bag 3004  
Braeside, VIC 3195  
AUSTRALIA

Customer service in Australia: 1800 623 118  
E-mail: [consumer.enquiry@remington-products.com.au](mailto:consumer.enquiry@remington-products.com.au)  
Website: [www.remington-products.com.au](http://www.remington-products.com.au)

**Spectrum Brands New Zealand Limited**

PO Box 9817  
Newmarket, Auckland 1149  
NEW ZEALAND

Customer service in New Zealand: 0800 736 776  
E-mail: [info@remington.co.nz](mailto:info@remington.co.nz)  
Website: [www.remington.co.nz](http://www.remington.co.nz)

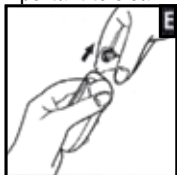


## **CLEANING, CARE & MAINTENANCE**

### **Cleaning the Epilator Head and Attachment Caps**

Note: Do not submerge the epilator body under water

To ensure long lasting performance of your epilator it is important to clean the head assembly and attachment regularly. Always keep the cap on the epilation head when it is not in use to prevent damage to the barrel.



- Ensure that the epilator is turned off and disconnected from the mains.
- Pull the cap attachment away from the body of the epilator.  
(Diagram E)
- Using the cleaning brush provided brush the accumulated hair from the tweezers by slowly turning the barrel. Alternatively, remove the attachment cap from body of the epilator and rinse the cap and barrel under running water.
- Allow to dry completely before reattaching the cap.
- Replace the cap attachment back onto the body of the epilator.

Note: The body of the epilator is NOT washable or suitable for cleaning under water.

### **Lubricating the Head After Contact With Water**

Once a month Remington® recommends that after rinsing the epilation barrel with water, that a light-grade oil (such as sewing machine oil) be used to lubricate the tweezers. Simply spread 1-2 drops lightly over the epilator barrel with your fingertip and wipe away all excess oil.

**DO NOT** use hair oil, grease or any oil mixed with kerosene or solvent as these will evaporate.

## STORAGE

When not in use, always unplug the power adaptor from the power outlet. Never wrap the cord of the power adaptor around the unit as this will cause the cord to wear prematurely and break. Handle the cord carefully for long life and avoid jerking, twisting or straining especially at the power plug. If the cord becomes twisted in use, periodically straighten it.



**This product is not suitable to use in a bath or shower.**

The epilator conforms to radio frequency interference requirements.

Any product purchased and used commercially carries a limited 90 Day Warranty.

# Spectrum Brands Australia Pty Ltd and Spectrum Brands New Zealand Limited

## WARRANTY AGAINST DEFECTS

In this warranty:

**Australian Consumer Law** means the Australian consumer law set out in Schedule 2 to the Competition and Consumer Act 2010;

**CGA** means the New Zealand Consumer Guarantees Act 1993;

**Goods** means the product or equipment which was accompanied by this warranty and purchased in Australia or New Zealand, as the case may be;

**Manufacturer, We or us** means:

1. for Goods purchased in Australia, Spectrum Brands Australia Pty Ltd ACN, 007 070 573; or
2. for Goods purchased in New Zealand, Spectrum Brands New Zealand Limited, as the case may be, contact details as set out at the end of this warranty;

**Supplier** means the authorised distributor or retailer of the Goods that sold you the Goods in Australia or in New Zealand; and

**You** means you, the original end-user purchaser of the Goods.

1. Our goods come with guarantees that cannot be excluded under the Australian Consumer Law, or the CGA. You are entitled to a replacement or refund for a major failure and compensation for any other reasonably foreseeable loss or damage. You are also entitled to have the goods repaired or replaced if the goods fail to be of acceptable quality and the failure does not amount to a major failure.
2. The benefits provided by this Warranty are in addition to all other rights and remedies in respect of the Goods which the consumer has under either the Australian Consumer Law or the CGA. The original purchaser of the Goods is provided with the following Warranty subject to the Warranty Conditions:
3. We warrant the Goods for all parts defective in workmanship or materials for the period of two (2) years from the date of purchase (**Warranty Period**). If the Goods prove defective within the Warranty Period by reason of improper workmanship or material, we may, at our own discretion, repair or replace the Goods without charge.

### Warranty Conditions

4. The Goods must be used in accordance with the manufacturer's instructions. This Warranty does not apply should the defect in or failure of the Goods be attributable to misuse, abuse, accident or non-observance of manufacturer's instructions on the part of the user. As far as the law permits, the manufacturer does not accept liability for any direct or consequential loss, damage or other expense caused by or arising out of any failure to use the Goods in accordance with the manufacturer's instructions.
5. Consumable parts (such as shaver heads, cutters and foils) of the Goods are included under this Warranty only where there is a defect in workmanship or materials used.
6. The warranty granted under clause 3 is limited to repair or replacement only.
7. Any parts of the Goods replaced during repairs or any product replaced remain the property of the manufacturer. In the event of the Goods being replaced during the Warranty Period, the warranty on the replacement Goods will expire on the same date as for the Warranty Period on the original Goods which are replaced.

8. In order to claim under the warranty granted under clause 3 you must:
  - (a) Retain this warranty with your receipt/proof of purchase; and
  - (b) Return the Goods to us at the relevant address below or to the Supplier by prepaid freight within the Warranty Period accompanied with (i) the legible and unmodified original proof of purchase, which clearly indicates the name and address of the Supplier, the date and place of purchase, the product name or other product serial number and (ii) this warranty.
9. This warranty is immediately void if:
  - (a) Any serial number or appliance plate is removed or defaced;
  - (b) The Goods have been serviced or otherwise repaired by a person not authorised to do so by us or where non approved replaced parts are used.
10. The Goods are designed for domestic use only. A limited 90-day Warranty applies to any industrial or commercial use of the Goods. The Goods must be connected to the electrical voltage requirements as specified in the ratings label located on the Goods.
11. This warranty does not cover the cost of claiming under the warranty or transport of the Goods to and from the Supplier or us.
12. This warranty is only valid and enforceable in Australia against Spectrum Brands Australia Pty Ltd and in New Zealand against Spectrum Brands New Zealand Limited.

Contact us or the Supplier for further details.

#### **Spectrum Brands Australia Pty Ltd**

Locked Bag 3004

Braeside, VIC 3195

AUSTRALIA

Customer service in Australia: 1800 623 118

E-mail: [consumer.enquiry@remington-products.com.au](mailto:consumer.enquiry@remington-products.com.au)

Website: [www.remington-products.com.au](http://www.remington-products.com.au)

#### **Spectrum Brands New Zealand Limited**

PO Box 9817

Newmarket, Auckland 1149

NEW ZEALAND

Customer service in New Zealand: 0800 736 776

E-mail: [info@remington.co.nz](mailto:info@remington.co.nz)

Website: [www.remington.co.nz](http://www.remington.co.nz)

**REMINGTON®**  
EST. NEW YORK 1937

#### **REMINGTON SERVICE HOTLINE**

☎Australia 1800 623 118 (toll free)

☎New Zealand 0800 736 776 (toll free)

#### **AUTHORISED REPAIR CENTRES**

Visit [www.remington-products.com.au](http://www.remington-products.com.au) for Authorised repair centre details.

® Registered Trade Mark of Spectrum Brands Inc., (SBI) or one of its subsidiaries

© 2021 Spectrum Brands Inc.

Rev. 03/21

Part No. T22-7001963

Type: EP7010



PLEASE  
RECYCLE