

## **DISPOSAL/RECYCLING**

Legislation in some localities mandates that e-waste (anything with a plug, battery or cord) is disposed of through controlled recycling facilities and must not be disposed of in general household waste. For more information about recycling of electrical and battery operated appliances, please contact your local council or your local household waste disposal service.



**WARNING: Do not use this appliance near bathtubs, showers, basins or other vessels containing water.**

**As with all electrical appliances, the power cord must be regularly checked for wear and tear. Immediately cease using this product if the power cord shows any signs of damage.**

This product conforms to radio frequency interference requirements.  
Any product purchased and used commercially carries a limited 90 Day Warranty.  
We suggest you use local waste management centres to recycle this product at end of life.

# Spectrum Brands Australia Pty Ltd and Spectrum Brands New Zealand Limited

## WARRANTY AGAINST DEFECTS

In this warranty:

**Australian Consumer Law** means the Australian consumer law set out in Schedule 2 to the Competition and Consumer Act 2010;

**CGA** means the New Zealand Consumer Guarantees Act 1993;

**Goods** means the product or equipment which was accompanied by this warranty and purchased in Australia or New Zealand, as the case may be;

**Manufacturer, We or us** means:

1. for Goods purchased in Australia, Spectrum Brands Australia Pty Ltd ACN, 007 070 573; or
2. for Goods purchased in New Zealand, Spectrum Brands New Zealand Limited, as the case may be, contact details as set out at the end of this warranty;

**Supplier** means the authorised distributor or retailer of the Goods that sold you the Goods in Australia or in New Zealand; and

**You** means you, the original end-user purchaser of the Goods.

1. Our goods come with guarantees that cannot be excluded under the Australian Consumer Law, or the CGA. You are entitled to a replacement or refund for a major failure and compensation for any other reasonably foreseeable loss or damage. You are also entitled to have the goods repaired or replaced if the goods fail to be of acceptable quality and the failure does not amount to a major failure.
2. The benefits provided by this Warranty are in addition to all other rights and remedies in respect of the Goods which the consumer has under either the Australian Consumer Law or the CGA. The original purchaser of the Goods is provided with the following Warranty subject to the Warranty Conditions:
3. We warrant the Goods for all parts defective in workmanship or materials for the period of five (5) years from the date of purchase (**Warranty Period**). If the Goods prove defective within the Warranty Period by reason of improper workmanship or material, we may, at our own discretion, repair or replace the Goods without charge.

### Warranty Conditions

4. The Goods must be used in accordance with the manufacturer's instructions. This Warranty does not apply should the defect in or failure of the Goods be attributable to misuse, abuse, accident or non-observance of manufacturer's instructions on the part of the user. As far as the law permits, the manufacturer does not accept liability for any direct or consequential loss, damage or other expense caused by or arising out of any failure to use the Goods in accordance with the manufacturer's instructions.
5. Consumable parts (such as shaver heads, cutters and foils) of the Goods are included under this Warranty only where there is a defect in workmanship or materials used.
6. The warranty granted under clause 3 is limited to repair or replacement only.
7. Any parts of the Goods replaced during repairs or any product replaced remain the property of the manufacturer. In the event of the Goods being replaced during the Warranty Period, the warranty on the replacement Goods will expire on the same date as for the Warranty Period on the original Goods which are replaced.

8. In order to claim under the warranty granted under clause 3 you must:
  - (a) Retain this warranty with your receipt/proof of purchase; and
  - (b) Return the Goods to us at the relevant address below or to the Supplier by prepaid freight within the Warranty Period accompanied with (i) the legible and unmodified original proof of purchase, which clearly indicates the name and address of the Supplier, the date and place of purchase, the product name or other product serial number and (ii) this warranty.
9. This warranty is immediately void if:
  - (a) Any serial number or appliance plate is removed or defaced;
  - (b) The Goods have been serviced or otherwise repaired by a person not authorised to do so by us or where non approved replaced parts are used.
10. The Goods are designed for domestic use only. A limited 90-day Warranty applies to any industrial or commercial use of the Goods. The Goods must be connected to the electrical voltage requirements as specified in the ratings label located on the Goods.
11. This warranty does not cover the cost of claiming under the warranty or transport of the Goods to and from the Supplier or us.
12. This warranty is only valid and enforceable in Australia against Spectrum Brands Australia Pty Ltd and in New Zealand against Spectrum Brands New Zealand Limited.

Contact us or the Supplier for further details.

#### **Spectrum Brands Australia Pty Ltd**

Locked Bag 3004

Braeside, VIC 3195

AUSTRALIA

Customer service in Australia: 1800 623 118

E-mail: [consumer.enquiry@remington-products.com.au](mailto:consumer.enquiry@remington-products.com.au)

Website: [www.remington-products.com.au](http://www.remington-products.com.au)

#### **Spectrum Brands New Zealand Limited**

PO Box 9817

Newmarket, Auckland 1149

NEW ZEALAND

Customer service in New Zealand: 0800 736 776

E-mail: [info@remington.co.nz](mailto:info@remington.co.nz)

Website: [www.remington.co.nz](http://www.remington.co.nz)

**REMINGTON®**  
EST. NEW YORK 1937

#### **REMINGTON SERVICE HOTLINE**

☎Australia 1800 623 118 (toll free)

☎New Zealand 0800 736 776 (toll free)

#### **AUTHORISED REPAIR CENTRES**

Visit [www.remington-products.com.au](http://www.remington-products.com.au) for Authorised repair centre details.

® Registered Trade Mark of Spectrum Brands Inc., (SBI) or one of its subsidiaries

©2020 Spectrum Brands Inc.

Rev. 04/20

Part No. T23-0001816

Type: AS15A



# REMINGTON®

EST. NEW YORK 1937

## HYDRALUXE VOLUMISING BLOW DRY BRUSH



**USE & CARE  
MANUAL**

PLEASE READ  
PRIOR TO USE

To register your product go to  
[www.remington-products.com.au](http://www.remington-products.com.au)  
[www.remington.co.nz](http://www.remington.co.nz)

**5 YEAR WARRANTY**

**AS8901AU**

## IMPORTANT SAFEGUARDS

**WARNING: When the HYDRALUXE VOLUMISING BLOW DRY BRUSH is used in a bathroom, unplug it after use since the proximity of water presents a hazard even when the HYDRALUXE VOLUMISING BLOW DRY BRUSH is switched off.**

**When using electrical appliances, especially when children are present, basic safety precautions should always be followed, including the following:**

**READ ALL INSTRUCTIONS BEFORE USING  
KEEP AWAY FROM WATER**

**DANGER: As with most electrical appliances, electrical parts are electrically live even when the switch is off.**

To reduce the risk of death by electric shock:

- Always unplug it immediately after using.
- Do not place or store an appliance where it can fall or be pulled into a bath or sink.
- Do not use while bathing.
- Do not place or drop into water or other liquid.
- If an appliance falls into water, “unplug it” immediately. Do not reach into the water.

**WARNING: TO REDUCE THE RISK OF BURNS, ELECTROCUTION, AND FIRE, OR INJURY TO PERSONS.**

- The appliance should never be left unattended when plugged in to a power outlet.
- This appliance is not intended for use by persons (including children) with reduced physical, sensory or mental capabilities, or lack of experience and knowledge, unless they have been given supervision or instruction concerning use of the appliance by a person responsible for their safety.

Keep the appliance and the power cord away from the edge of table or countertops and out of reach of children and persons with reduced physical, sensory or mental capabilities.

- This appliance is not a toy. Children shall be supervised to ensure they do not play with the appliance.
- Cleaning and user maintenance shall not be made by children without supervision.

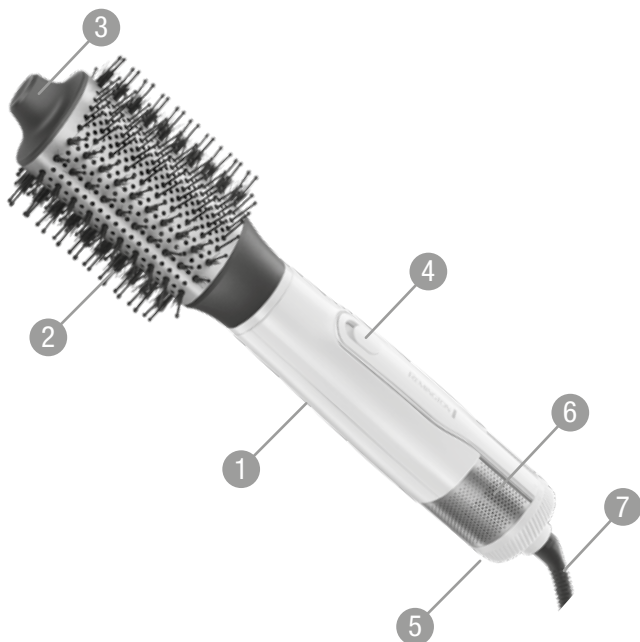
- Use this appliance only for its intended use as described in this manual. Do not use attachments not recommended by Remington.
- Never operate this appliance if it has a damaged cord or plug, if it is not working correctly, if it has been dropped or damaged, or dropped into water. If the supply cord or plug of this rotating air brush is damaged it must only be replaced by the manufacturer, its service agents or a qualified electrical tradesperson to avoid a hazard.
- Keep the cord away from heated surfaces.
- Do not use on people who are asleep.
- Never drop or insert any object into any opening of this appliance.
- Do not use outdoors or where aerosol (spray) products are being used or where oxygen is being administered.
- Do not direct hot air towards the eyes or other heat sensitive areas.
- Attachments, where provided, may be hot during and after use. Allow them to cool before handling.
- When using the appliance, keep your hair away from the air inlet grille. Do not let your hair get drawn into the appliance.
- Do not place the heated rotating air styler on any soft surface such as a bed, carpet or a towel. Place only on a hard, flat, heat resistant surface.

**For additional protection, the installation of a residual current device (RCD) with a rated residual operating current not exceeding 30mA is advisable in the electrical circuit supplying the bathroom. Ask your electrical contractor for advice.**

**SAVE THESE INSTRUCTIONS**

## AS8901AU HYDRALUXE VOLUMISING BLOW DRY BRUSH USE AND CARE INSTRUCTION MANUAL

Thank you for purchasing your Remington® Hydraluxe Volumising Blow Dry Brush. The moisture lock ceramic coating transfers micro-conditioners for smooth, shiny hair.



### KEY PARTS

- |                                   |                          |
|-----------------------------------|--------------------------|
| 1. 1200W power handle             | 5. Speed selector switch |
| 2. Mixed bristle brush            | 6. Inlet grille          |
| 3. Cool tip                       | 7. Swivel cord           |
| 4. Heat selector switch (⋈, ⚡, C) |                          |



## **BASIC HAIR CARE INSTRUCTIONS**

The Hydraluxe Volumising Blow Dry Brush is designed to add maximum volume as you dry and preserve the perfect balance of moisture in your hair.

- Wash and condition your hair as normal.
- Squeeze out excess moisture with a towel and comb through.

Note: The Hydraluxe Volumising Blow Dry Brush is not suitable for use on synthetic wigs or hair extensions.

## **MOISTURE LOCK CERAMIC COATING**

Transfers micro-conditioners to help preserve the perfect balance of moisture.



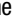
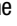
## **IONIC CONDITIONING**

Combats static for frizz free shine.

## **HEAT SETTINGS**

- Plug your product into the mains power supply.
- To turn your air styler on, turn the speed selector switch to the **1** (low) or **2** (high) setting.
- Your air styler has three temperature settings:
  - High (**H**): Thick and difficult to style hair
  - Hydracare (**A**): Thin/fine, damaged or bleached hair
  - Cool (**C**): To set your style after styling
- Use the heat selector switch to select the appropriate temperature for your hair type.

## **TO FIT THE BRUSH**

- Fit the brush head before you turn on the appliance.
- Align the  symbol on the brush with the  mark on the body (fig. A).
- Rotate the brush until the  symbol is aligned with the  mark to secure (fig. B).

## **CREATING VOLUME**

- To dry your roots and add volume, place the brush underneath the section close to the roots and hold for a few seconds, lifting the hair as you dry.
- Move the styler downward through the hair section.
- Repeat this around the head.
- Let the hair cool before further styling.

## **CREATING SHAPED ENDS**

- To curl the ends in, place the brush underneath the section close to the ends and rotate the styler inwards allowing the hair to wrap around the barrel and hold for a few seconds.
- To curl the ends out, place the brush on top of the section close to the ends and rotate the styler outwards allowing the hair to wrap around the barrel and hold for a few seconds.
- Repeat this around the head.
- Let the hair cool before further styling.

## **CREATING SMOOTH, SLEEK HAIR**

- Starting at the roots, slowly brush through each section just as you would with a normal brush.
- To add additional volume, tip your head upside down and brush the underneath of your hair.
- Repeat this around the head.
- Let the hair cool before further styling.

## **USING THE HYDRACARE SETTING**

- The Hydracare setting gently dries the hair at a lower temperature for healthier styling.
- To activate select the Hydracare setting (H) using the heat selector switch.

## **COOL SETTING**

- To set your style, use the cool setting. To operate move the temperature control switch to the C position.

## **STORAGE, CLEANING AND MAINTENANCE**

- After use, turn the appliance off by turning the speed selector switch to the 0 position.
- Unplug the appliance and allow to cool before cleaning and storing away.
- Wipe all surfaces with a damp cloth
- Don't use harsh or abrasive cleaning agents or solvents,
- To maintain peak product performance and to prolong motor life, it is important to regularly remove any dust and dirt from the inlet grille.
- Clean the inlet grille with a cloth or soft brush.