

REMINGTON®

HyperFlex Aqua



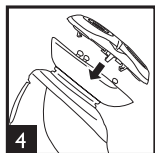
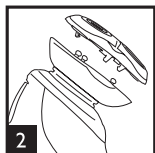
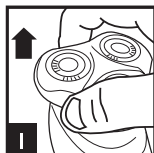
XR1430
XR1450
XR1470



www.remington.co.uk

Register online for an EXTRA year guarantee

Visit uk.remington-europe.com/product-registration You must register within 28 days of purchase.



Thank you for buying your new Remington® product. Please read these instructions carefully and keep them safe. Remove all packaging before use.

IMPORTANT SAFEGUARDS

- This appliance can be used by children aged from 8 years and above and persons with reduced physical, sensory or mental capabilities or lack of experience and knowledge if they have been supervised/instructed and understand the hazards involved. Children shall not play with the appliance. Cleaning and user maintenance shall not be done by children unless they are older than 8 and supervised. Keep the appliance and cable out of reach of children under 8 years.
- Always check the appliance before you use it. Do not use the appliance if it is damaged, as this may cause injury.
- The adaptor contains a transformer. Do not cut off the adaptor to replace it with another plug, as this causes a hazardous situation.



The shaver is suitable for cleaning under an open water tap.

Suitable for use in a bath or shower.

- **WARNING:** Detach the shaver from the charging adaptor before cleaning it in water.
- Do not use the product with a damaged cord. A replacement can be obtained via our International Service Centres.
- This product should only be used with the charging adaptor supplied
- Always replace a damaged adaptor with one of the original type.
- Do not use the shaver, charging adaptor, charging stand or any other part if it is damaged, as this may cause injury.
- This appliance should never be left unattended when plugged into a power outlet, except when charging.
- Keep the power plug and cord away from heated surfaces.
- Do not plug or unplug the appliance with wet hands.
- Do not twist or kink the cable, or wrap it round the appliance.
- This appliance is not intended for commercial or salon use.

PARTS

- | | |
|--|--------------------------------|
| 1. On/off switch | 8. LED display (XR1470) |
| 2. Head and cutter assembly | 9. Pop-up trimmer |
| 3. Comfort Float cutters | 10. Trimmer release button |
| 4. Hairpocket | 11. Charging pins |
| 5. Antimicrobial head surrounds | 12. Charging stand |
| 6. Charging indicator light and low battery indicator (XR1430) | 13. Adaptor (not shown) |
| 7. Fuel gauge (XR1450) | 14. Headguard (not shown) |
| | 15. Cleaning brush (not shown) |
-

GETTING STARTED

It is recommended that you use your new shaver daily for up to four weeks to allow time for your beard and skin to become accustomed to the new shaving system.

CHARGING STAND

- Rotate open the charge stand fully to stand firmly on a flat surface while charging. For travel you can fold the stand around the shaver.

CHARGING YOUR SHAVER

- Ensure the appliance is turned off.
- Connect the charging stand to the adaptor and then to the mains.
- Place the shaver in the charging stand.
- Charge for at least 24 hours when using for the first time.
- Allow 90 minutes for a full charge (XR1450 and XR1470) and 4 hours for XR1430.
- The charging indicator light (XR1430), fuel gauge (XR1450) or LCD display (XR1470) will indicate when the shaver is fully charged.
- XR1430: When charge is low, the top LED will illuminate a solid red light. When charging the bottom LED will illuminate a solid green light. When fully charged both LEDs will be off.
- XR1450: The fuel gauge will display the amount of charge left when the shaver is on. When charging, the LEDs blink in a clockwise rotation. When fully charged all LEDs will illuminate then turn off.
- XR1470: When charge is low 'Lo' will appear on the screen and will flash until the shaver is plugged in to charge. When charging, the LEDs blink in a clockwise rotation. When fully charged the indicator will flash 60 for 5 minutes and then the display will shut off.
- To preserve the life of your batteries, let them run out every 6 months then recharge for 24 hours.
- The appliance adapts automatically to a mains voltage between 100V and 240V.

INSTRUCTIONS FOR USE

SHAVING

- Note: This shaver is for cordless use only.
- Make sure your shaver is properly charged.
- Switch the shaver on.
- Stretch the skin with your free hand so the hairs stand upright.
- Only apply light pressure on the shaving head while shaving (pressing too hard can damage the heads and make them vulnerable to breakage).
- Use short, circular strokes.

SHAVING WITH SHAVING GEL

- Follow the same instructions as dry shaving if using shaving gel.
- CAUTION After use with shaving gel, please rinse the head and cutters under warm water to clean away any excess gel and debris.

TRIMMING

- Push the trimmer button to release the detail trimmer.
- Hold the trimmer at a right angle to your skin.
- Place the trimmer at desired trim line for a quick, easy, professional trim.
- To retract the trimmer, push down until it locks into position.

TRAVEL LOCK FEATURE

- Model XR1470 is equipped with a Travel Lock feature, intended to prevent the shaver from turning on and discharging accidentally while packed in luggage.

To Set the Travel Lock:

- Press and hold the on switch for 3 seconds. The shaver will turn on, then will shut off after the 3 seconds. The LED display will flash five times to indicate the lock is set.
- While the travel lock is set, if the on switch is pressed, the LED display will flash three times to indicate the shaver is in travel lock mode.

To Unlock the Travel Lock:

- Press and hold the on switch for 3 seconds. The LED display will flash threetimes while the button is being held and then the shaver will turn on.

TURBO FEATURE (XR1470 ONLY)

- The XR1470 comes with a Turbo feature to shave thick stubble. Press the on/off switch once to operate the shaver at normal speed. Press the on/off switch a second time to operate the shaver in Turbo mode. When the Turbo feature is activated the LED display will cycle around.
- To deactivate press the on off switch once to turn the shaver off.

TIPS FOR BEST RESULTS

- Use moderate to slow stroking movements. The use of short circular motions in stubborn areas may obtain a closer shave, especially along the neck and chin line.
- DO NOT press hard against the skin in order to avoid damage to the rotary heads.

CARE FOR YOUR SHAVER

Care for your appliance to ensure a long lasting performance.

We recommend you clean your product after each use.

The easiest and most hygienic way to clean the appliance is by rinsing the appliance head after use with warm water.

CLEANING

- Pull the rotary shave face off the hair pocket (Fig. 1 and 2).
- Tap out excess hair shavings from the hair pocket (Fig. 3). Hair clippings can also be washed out of the hair pocket and or shave face by rinsing these under the tap.
- Once dry, snap the shave face back onto the hair pocket (Fig. 4).

CLEANING TRIMMER

- Lubricate the teeth of the trimmer every six months with a drop of sewing machine oil.
- Replacement parts and accessories are available to buy at <http://www.remington.co.uk/parts-accessories>

BATTERY REMOVAL

- The battery must be removed from the appliance before it is scrapped.
- The appliance must be disconnected from the supply mains when removing the battery.
- Run the shaver until the motor stops.
- Remove the head from the shaver (pull the head up and off).
- Using a small screwdriver, pry the 'collar' off of the top of the handle.
- Using a small screwdriver, pry the front cover from the body.
- Remove three screws located on front of shaver.
- Using a small screw driver, pry up the newly unsecured inner housing to expose the battery.
- Pry battery free from circuit board.
- Dispose of battery properly.

RECYCLING



To avoid environmental and health problems due to hazardous substances, appliances and rechargeable and non-rechargeable batteries marked with one of these symbols must not be disposed of with unsorted municipal waste. Always dispose of electrical and electronic products and, where applicable, rechargeable and non-rechargeable batteries, at an appropriate official recycling/collection point.

SERVICE AND GUARANTEE



Defects affecting product functionality appearing within the guarantee period will be corrected by replacement or repair at our option provided the product is used and maintained in accordance with the instructions. Your statutory rights are not affected. To claim an extra 1 year guarantee, register your product online within 28 days of purchase.

Register at: **<https://uk.remington-europe.com/product-registration>**

Consumables are guaranteed only for their recommended lifecycle. Replacement/spare parts* are excluded and are only covered by a 1 year warranty.

*Examples include, but are not limited to, adaptors, haircare attachments, grooming accessories, etc.

SERVICE CENTRE

UNITED KINGDOM

 0800 212 438 (free call mainland UK)

Spectrum Brands (UK) Ltd

Fir Street, Failsworth, Manchester

M35 0HS, UK

www.remington.co.uk

IRELAND

 142 951 40

Remington Consumer Products,

Unit B12, Ballymount Corporate Park,

Ballymount, Dublin 12

<https://ie.remington-europe.com>

Model No. XR1430/XR1450/XR1470

19/UK/ XR1430/XR1450/XR1470 T22-7000613 Version 06 /19

Remington® is a Registered Trade Mark of Spectrum Brands, Inc., or one of its subsidiaries.
Spectrum Brands (UK) Ltd

Fir Street,

Fairsworth,

Manchester

M35 0HS

www.remington.co.uk

© 2019 Spectrum Brands, Inc.