

REMINGTON®
style inspirations

SLEEK&CURL



S6500



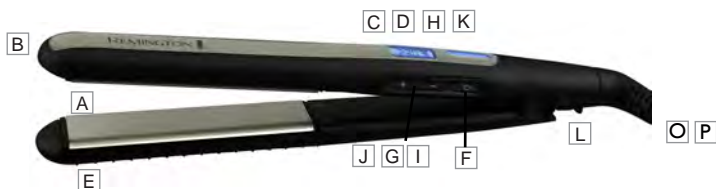
**ADVANCED
CERAMIC®**

2x smoother glide
3x longer lasting

*vs. standard
ceramic coating

REMINGTON®

SLEEK&CURL



P



M



ENGLISH

Thank you for buying your new Remington® product. Before use, please read these instructions carefully and keep them in a safe place for future reference.



PRODUCT FEATURES

- A** Advanced Ceramic Coating for extra smooth glide and longer lasting plates
 - B** Designed with rounded edges to hold and create curls more easily and effectively
 - C** High heat 150 -230°C
 - D** Fast heat up in 15 seconds
 - E** Longer length 110mm plates
 - F** On-off switch – press and hold down for 1 second until the display lights up/turns off
 - G** Adjustable +/- temperature buttons and digital display - LCD and bars will flash until correct temperature is reached
 - H** Recommended temperatures to suit hair types
 - 150°C - 180°C – Fine Hair
 - 180°C - 200°C – Medium Hair
 - 200°C - 230°C – Thick Hair
 - I** Turbo boost function – Hold the '+' button for 2 seconds and the display with automatically set to 230°C
 - J** Button lock function – once you have chosen your desired temperature hold the “-” button for 2 seconds. A “padlock” symbol will appear on the display. This will prevent accidentally changing the temperature whilst in use. To unlock hold the “-” button again for 2 seconds.
 - K** Automatic safety shut off – if no buttons have been pressed after 60 minutes the straightener will automatically turn off
 - L** Hinge lock for storage: - Plates can be shut together for easy storage
 - Locked- Push the hinge lock up to the locked position
 - Unlocked- Pull the hinge lock down to the unlocked positionNOTE: Do not heat the unit in the locked position
 - M** Includes styling DVD on how to create many different styles
 - N** Gift box & heat protection pouch
 - O** 2.5m swivel cord
 - P** Multi-voltage: For use at home or abroad.
When used at 120V the heat up times and temperatures may vary.
- 3 year guarantee





INSTRUCTIONS FOR USE

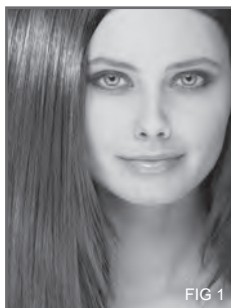


FIG 1

SMOOTH AND SLEEK (Fig 1)

- ▶ Before use, make sure hair is clean, dry and tangle-free.
- ▶ Plug in the unit and set to your desired temperature. The bars on the LCD will flash until your desired temperature is met.
- ▶ For extra protection and best results, section hair prior to straightening and spray with heat protection spray. Always straighten the lower layers first.
- ▶ Run the straightener through the entire length of the hair, without stopping for a Smooth and Sleek finish.
- ▶ Repeat only twice per section to prevent hair damage.

PROFESSIONAL CURLS (Fig 2)

- ▶ Firmly grip a section of hair between the plates, close to the roots.
- ▶ Keeping tension firm gently rotate the styler whilst pulling through the length of the hair section to the tips using the curl guides to grip and shape the curl as you style.
- ▶ Make sure to keep rotating the styler.
- ▶ Remove styler and holding the hair length, allow the curl to spring into shape.
- ▶ Repeat using different size sections of hair for a natural soft curl look.

For all other styles see included DVD



FIG 2



IMPORTANT INSTRUCTIONS

- ▶ Due to the extreme heat capabilities of this styler, extra care should be taken when using.
- ▶ While heating and cooling, place on flat, smooth, heat-resistant surface. Only hold unit at the end of the handle.
- ▶ This is a high performance product, avoid frequent use to prevent damage to hair.
- ▶ Please note regular use of styling products may deteriorate the coating.
- ▶ Do not scratch the surface, as this will deteriorate the effectiveness of the coating.

ENGLISH



CLEANING AND MAINTENANCE

Ensure the unit is unplugged and cool. To maintain the effectiveness of your product wipe clean after use with a damp cloth. Do not use an abrasive cleaning fluid to clean, as damage will occur.



SAFETY CAUTIONS

WARNING – FOR ADDITIONAL PROTECTION THE INSTALLATION OF A RESIDUAL CURRENT DEVICE (RCD) WITH A RATED RESIDUAL OPERATING CURRENT NOT EXCEEDING 30mA is ADVISABLE. ASK AN ELECTRICIAN FOR ADVICE.

WARNING – THIS APPLIANCE MUST NOT BE TAKEN INTO A BATHROOM. IT SHOULD NOT BE USED NEAR BATHTUBS, SHOWERS, BASINS OR OTHER VESSELS CONTAINING WATER OR OTHER LIQUIDS.



This product is not suitable for use in bath or shower.

THE STYLER SHOULD BE UNPLUGGED FROM MAINS SUPPLY WHEN NOT IN USE.

- ▶ Do not leave the styler unattended when switched on.
- ▶ Allow the styler to cool down before storage.
- ▶ Do not immerse in water or other liquids.
- ▶ Do not place styler on soft material e.g. carpet, bedding, towels, rugs etc.
- ▶ Always ensure the voltage to be used corresponds to the voltage stated on the unit.
- ▶ Keep this product out of reach of children. The use of this appliance by persons with reduced physical, sensory or mental capabilities or lack of experience and knowledge can give cause to hazards. Persons responsible for their safety should give explicit instructions or supervise the use of the appliance
- ▶ Do not use any attachments with this styler, other than those supplied by Remington®.
- ▶ Avoid allowing any part of the hot plates to contact the face, neck or scalp.
- ▶ Do not wrap the cord around the unit. Check cord regularly for any sign of damage.
- ▶ This product is not intended for commercial or salon use.
- ▶ Damaged cords can be dangerous. If the supply cord of this unit becomes damaged, discontinue use immediately and return the appliance to your nearest authorised Remington® service dealer for repair or replacement in order to avoid a hazard.
- ▶ Special tools are required for any examination, adjustment or repair. Unqualified repair work could lead to hazardous conditions for the user.
- ▶ We do not accept responsibility for damage to the product, persons or other item(s), caused by misuse, abuse or non-compliance with these instructions.

ENGLISH



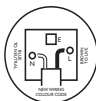
WIRING INSTRUCTIONS UK Plugs Only

This product is fitted with a BSI363 plug fused at 13A. If the plug is unsuitable, it should be disconnected and an appropriate plug fitted as detailed below. If it is necessary to replace the plug fuse, use only fuses that are approved to BSI362, rated at 13A. If in doubt consult a qualified electrician.

The wires in the mains lead are coloured in accordance with following code:

BLUE – NEUTRAL

BROWN – LIVE



As the colours of the wires in the mains lead of this appliance may not correspond with the coloured markings identifying the terminals in your plug, proceed as follows:

– The wire which is coloured BLUE must be connected to the terminal which is marked 'N' or coloured BLACK. The wire which is coloured BROWN must be connected to the terminal which is marked 'L' or coloured RED. Never connect either of the wires to the big EARTH terminal marked 'E' or coloured GREEN or GREEN AND YELLOW.



PROTECT THE ENVIRONMENT

Do not dispose of the product in household waste at the end of its life. Disposal can take place at the Remington® Service Centre or appropriate collection sites.



For further information on recycling see www.remington-europe.com



ENGLISH



SERVICE AND WARRANTY

This product has been checked and is free of defects. We warrant this product against any defects that are due to faulty material or workmanship for the warranty period from the original date of consumer purchase. If the product should become defective within the warranty period, we will repair any such defect or elect to replace the product or any part of it without charge provided there is proof of purchase. This does not mean an extension of the warranty period.

In the case of a warranty simply call the Remington® Service Center in your region. This warranty is offered over and above your normal statutory rights. The warranty shall apply in all countries in which our product was sold via an authorised dealer.

This warranty does not include damage to the product by accident or misuse, abuse, alteration to the product or use inconsistent with the technical and/or safety instructions required. This warranty shall not apply if the product has been dismantled or repaired by a person not authorised by us.

For further information and advice please contact:

Customer Services Department. Rayovac Europe Ltd, Watermans House, Watermans Court,

Kingsbury Crescent, The Causeway, Staines, Middlesex, TW18 3BA.

Tel: 0800 212 438 Fax: +44 (0) 1784 411 412



INTERNATIONAL SERVICE CENTRE

United Kingdom

 **+44 0800 212 438 (free call)**

Rayovac Europe Ltd,
Watermans House, Kingsbury Crescent,
The Causeway, Staines, Middlesex,
TW18 3BA, UNITED KINGDOM

www.remington.co.uk





Model No. S6500

I0/UK/S6500 Version 03/10 Part No. T22-29519

REMINGTON® is a Registered Trade Mark of Spectrum Brands, Inc., or one of its subsidiaries

VARTA Consumer Batteries GmbH & Co. KGaA

Alfred-Krupp-Str.9

73479 Ellwangen

Germany

www.remington-europe.com

© 2010 SBI

This product is not suitable for use in bath or shower.

