

REMINGTON

REMINGTON®

## HAIR CLIPPER

Cord/Cordless



HC650

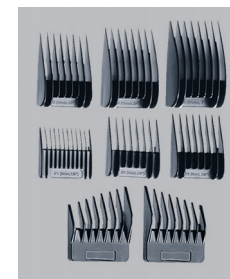
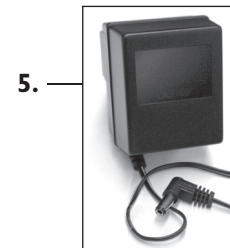
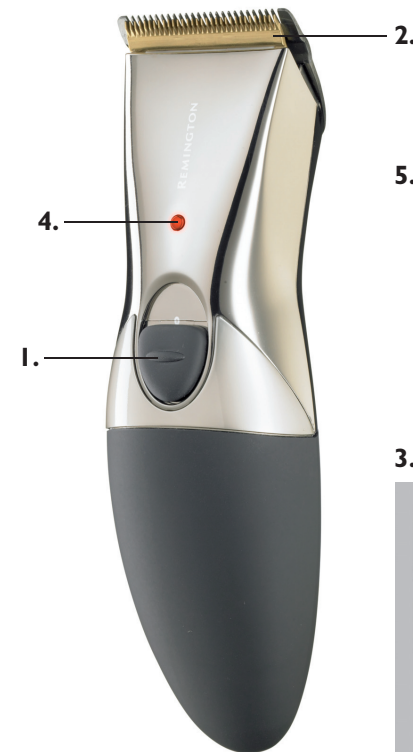
### Model No. HC650

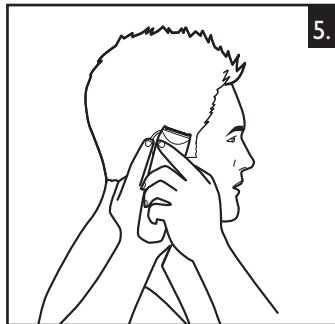
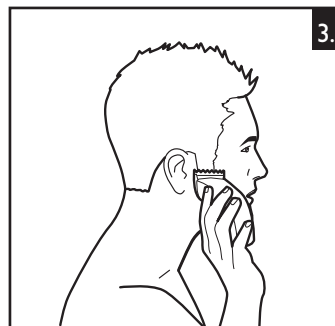
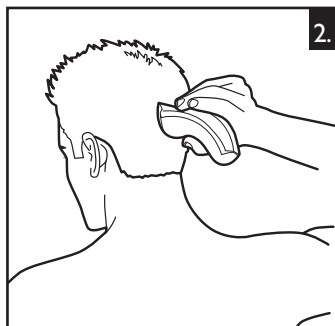
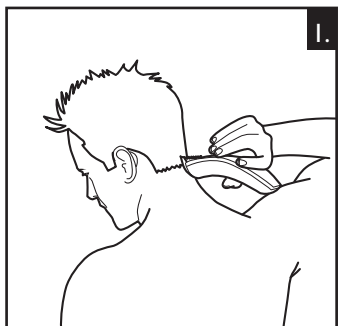
09/UK/HC650 Version 02/09 Part No. T22 -28398  
REMINGTON® is a Registered Trade Mark of Spectrum Brands, Inc., or one of its subsidiaries  
VARTA Consumer Batteries GmbH & Co. KGaA  
Alfred-Krupp-Str. 9  
73479 Ellwangen  
Germany  
[www.remington-europe.com](http://www.remington-europe.com)  
© 2009 SBI



44-0650-902000

REMINGTON





### United Kingdom

**☎ +44 0800 212 438 (free call)**

Rayovac Europe Ltd,  
Watermans House, Kingsbury Crescent,  
The Causeway, Staines, Middlesex,  
TW18 3BA, UNITED KINGDOM

[www.remington.co.uk](http://www.remington.co.uk)

Thank you for choosing Remington. Our products are designed to meet the highest standard of quality, functionality and design. We hope you enjoy using your new Remington® product.

Please read the instructions for use carefully and keep in a safe place for future reference.



## CAUTION

- ◆ Use this appliance only for its intended use as described in this manual. Do not use attachments not recommended by Remington.
- ◆ Do not use this product if it is not working correctly, if it has been dropped or damaged, or dropped into water.



## DESCRIPTION

1. On/Off switch
2. Blade set
3. 8 attachment guide combs
4. Charge indicator light
5. Charging adaptor



## GETTING STARTED

### ■ CHARGING YOUR HAIRCLIPPER

Before using your hair clipper for the first time, charge for 14-16 hours.

- ▶ Ensure the product is switched off.
- ▶ Connect the charging adaptor to the product and then to the mains. The charging indicator will light up.

Your clipper cannot be overcharged. However, if the product is not going to be used for an extended period time (2-3 months), unplug it from the mains and store. Fully recharge your hairclipper when you would like to use it again.

To preserve the life of your batteries, let them run out every six months then recharge for 14-16 hours.

### ■ CORDED USE

- ▶ Connect the charging adaptor to the product and then to the mains.

⚡ CAUTION: Extended mains only use will result in the reduction of the battery life.



## HOW TO USE

### Before starting the cut

- ▶ Inspect the clipper making sure that it is free from hair and dirt.
- ▶ Seat the person so that their head is approximately at your eye level.
- ▶ Before cutting, always comb the hair so it is tangle free and dry.

### To attach a comb

- ▶ Hold the comb with its teeth upward.
- ▶ Slide it onto and along the clipper blade until the front of the comb firmly sits against the clipper blade.

### To remove the comb

- ▶ Holding the clipper with the blades facing away from you, firmly push the comb upward and away from the blades.

- ▶ Each comb attachment is marked accordingly on its outside middle surface (3mm, 7mm, 9mm, 12mm, 18mm, 25mm, left and right ear guide).

Replacement combs available. Model: SP254.

#### ■ INSTRUCTIONS FOR HAIR CUTTING

- ◆ Note: For even cutting, allow the comb attachment/blade to cut its way through the hair. Do not force it through quickly. If you are cutting for the first time, start with the maximum comb attachment

#### **STEP 1 – Nape of the neck – DIAGRAM 1**

- ▶ Use 3 mm or 7 mm guide comb.
- ▶ Hold the clipper with the blade teeth pointing upwards. Begin starting at the centre of the head at the base of the neck.
- ▶ Slowly lift the clipper, working upwards and outwards through the hair, trimming just a little at a time.

#### **STEP 2 – Back of the head – DIAGRAM 2**

- ▶ With the 12 mm or 18 mm guide comb attached, cut the hair at the back of the head.

#### **STEP 3 – Side of the head – DIAGRAM 3**

- ▶ With the 3 mm or 7 mm guide comb attached, trim sideburns. Then change to the longer 9mm guide comb and continue to cut the top of the head.

#### **STEP 4 – Top of the head – DIAGRAM 4**

- ▶ With the 18 mm or 25 mm guide comb attached, cut hair on top of the head against the direction in which the hair normally grows.
- ▶ For longer hair on top, use without a guide comb. Lift the hair on top of the head with a small hand comb. Cut over the hand comb with the hair lifted or hold the hair between the fingers to lift it and cut it to the desired length.
- ▶ Always work from the back of the head.

#### **STEP 5 – The finishing touches – DIAGRAM 5**

- ▶ Use the clipper without an attachment comb for close trimming around the base and sides of the neck. Use the ear comb guides to get a clean line around each ear. For the required ear comb guide, angle the clipper and lightly stroke around each ear to the back of the neck.
- ▶ To produce a clean straight line at the sideburns, reverse the hair clipper. Place the reversed clipper at right angles to the head, tips of the blades lightly touching the skin and then work downwards.

## ■ SHORT TAPERED STYLES – “FLAT TOPS” & SHORT CUTS

- ▶ Starting with the longest guide comb attached (25mm), cut from the back of the neck to the crown. Hold the guide comb flat against the head and slowly move the clipper through the hair, as shown. (DIAGRAM 1)
- ▶ Use the same procedure from the lower side to the upper side of the head, as illustrated. Then cut the hair against the direction in which it grows and level with the sides. (DIAGRAM 3)
- ▶ To give a “flat top” look, the hair on top of the head must be cut over the top of a flat comb.
- ▶ Use a closer guide comb to taper the hair down to the neckline as desired.



## CARE FOR YOUR HAIRCLIPPER

Your clipper is fitted with high quality titanium blades. To ensure long lasting performance of your clipper, clean the blades and unit regularly. Always keep the protective cap on the trimmer blade and lubricate the clipper lightly before and after cleaning.

### ■ AFTER EACH USE

- ◆ Note: This product is only washable if purchased in the United Kingdom and has a three-pin charging adaptor. Due to European legislation we are unable to offer this feature in Western and Eastern European countries.
- ▶ Ensure the clipper is switched off and disconnected from the mains.
- ▶ Brush or rinse the accumulated hair from the blades. Do not submerge the clipper in water.
- ▶ Place one or two drops of oil on the blades. Turn the clipper on to distribute the oil evenly, wipe off any excess oil. Excess oil will cause damage to your product.
- ▶ To clean the unit, wipe with a damp cloth and dry immediately.
- ◆ Note: Ensure that the clipper is turned off when cleaning or applying oil.

### ■ EVERY SIX MONTHS

At regular intervals the Blade Set should be removed and cleaned.

- ▶ Remove the 2 screws retaining the fixed blade with a screwdriver. Do not remove blade set.
- ▶ Brush out hairs from between the blades with soft cleaning brush. Do not remove the lubricating grease from the blades. It is not necessary to remove the small moving blade from the unit.

- ▶ If the moving blade has been removed this can be re-fitted by slotting the long grooved edge of the blade onto the two white plastic guide ridges and then seating the blade over the plastic actuator bar. The fixed blade is fitted with the raised profile pointing outwards and fixed with the 2 screws.
- ▶ Before fully tightening the 2 screws, adjust the taper lever to the lower position and align the blades so that their cutting edges are parallel to one another. Tighten the 2 screws. Note that if the blades are not correctly aligned then cutting efficiency will be impaired.
- ▶ Place a few drops of cutter or sewing machine oil onto the blades. Wipe off excess oil.

#### ■ **CLEANING CAUTIONS**

- ▶ Cleaning should only be done with a soft brush, such as the brush supplied with the product.
- ▶ Only use the light-grade oil supplied or sewing machine oil on the blades.
- ▶ Do not use harsh or corrosive cleaners on the units or their blades. Do not submerge in water as damage will occur.
- ▶ Do not wrap the cord of the charging adaptor around the appliance.



## **IMPORTANT SAFETY INSTRUCTIONS**

### **WARNING – TO REDUCE THE RISK OF BURNS, ELECTROCUTION, FIRE, OR INJURY TO PERSONS:**

- ▶ An appliance should never be left unattended when plugged into a power outlet.
- ▶ Keep the power plug and cord away from heated surfaces.
- ▶ Make sure the power plug and cord do not get wet.
- ▶ Do not unplug the product with wet hands.
- ▶ Do not use the product with a damaged cord. A replacement can be obtained via our Remington® Service Centre.
- ▶ Charge, use and store the product at a temperature between 15°C and 35°C.
- ▶ Always unplug from the mains when cleaning.
- ▶ Only use the parts supplied with the appliance.
- ▶ Keep this product out of reach of children. The use of this appliance by persons with reduced physical, sensory or mental capabilities or lack of experience and knowledge can give cause to hazards. Persons responsible for their safety should give explicit instructions or supervise the use of the appliance.



## PROTECT THE ENVIRONMENT



Ni-MH

- ▶ The product contains a Nickel-Metal Hydride cell unit. Do not dispose the trimmer in household waste at the end of its useful life. Disposal can take place at our service centres or appropriate collection sites.

- ◆ **CAUTION:** Do not put in fire or mutilate your battery packs as they may burst or release toxic materials.



For further information on recycling see [www.remington-europe.com](http://www.remington-europe.com)



## SERVICE AND WARRANTY

This product has been checked and is free of defects. We warrant this product against any defects that are due to faulty material or workmanship for a 2 year period from the original date of consumer purchase. If the product should become defective within the warranty period, we will repair any such defect or elect to replace the product or any part of it without charge provided there is proof of purchase. This does not mean an extension of the warranty period.

In the case of a warranty simply call the Remington® Service Center in your region.

This warranty is offered over and above your normal statutory rights.

The warranty shall apply in all countries in which our product was sold via an authorised dealer.

This warranty does not include shaving heads / foils and cutters which are consumable parts. Also not covered is damage to the product by accident or misuse, abuse, alteration to the product or use inconsistent with the technical and/or safety instructions required. This warranty shall not apply if the product has been dismantled or repaired by a person not authorised by us.