

★ Temperature Lock Function

Set the desired temperature by pressing +/- buttons and lock the temperature controls by pressing the 'L' button for 2 seconds. A 'padlock' symbol will appear next to the temperature. To unlock the temperature controls, press and hold the 'L' button again for 2 seconds.

👁 CLEANING AND MAINTENANCE

- Unplug the appliance and allow to cool.
- Wipe all the surfaces with a damp cloth.
- Don't use harsh or abrasive cleaning agents or solvents.

♻ ENVIRONMENTAL PROTECTION

To avoid environmental and health problems due to hazardous substances in electrical and electronic goods, appliances marked with this symbol must not be disposed of with unsorted municipal waste, but recovered, reused or recycled.



➡ SERVICE AND GUARANTEE

Defects affecting product functionality appearing within the guarantee period will be corrected by replacement or repair at our option provided the product is used and maintained in accordance with the instructions.

Defects from repair by an unauthorized dealer are not covered.

Consumables are excluded.

Your statutory rights are not affected.

If you call the Service Centre, please have the Model No. to hand, as we won't be able to help you without it. The Model No. can be found on the rating plate of the appliance.

Replacement parts and accessories are available to buy at www.remington.co.uk/parts-accessories

➡ SERVICE CENTRE

United Kingdom

☎ Tel 0800 212 438 (free call mainland UK)

☎ +44 161 947 3111 (call outside the UK)

Spectrum Brands (UK) Ltd

Fir Street, Failsworth, Manchester

M35 0HS, UK

www.remington.co.uk

Ireland

☎ Tel 142 951 40

Remington Consumer Products,
Unit B12, Ballymount Corporate Park,
Ballymount, Dublin 12.
www.remington.co.uk

🔗 REGISTER ONLINE FOR

£10,000 prize draw, EXTRA year guarantee, FREE rewards gallery.

Visit www.productregister.co.uk/remington. You must register within 28 days of purchase.

Model No. CI96Z1

13/UK/ CI96Z1 T22-0000955 Version 01 /13

Remington® is a Registered Trade Mark of Spectrum Brands, Inc., or one of its subsidiaries.

Spectrum Brands (UK) Ltd

Fir Street,

Failsworth,

Manchester

M35 0HS

www.remington.co.uk

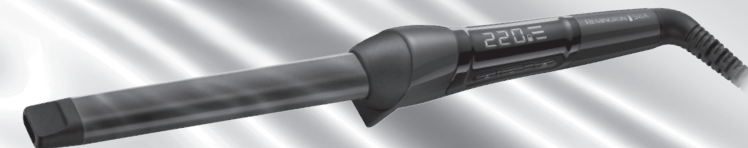
© 2013 SBI

Background copyright Alexpi, 2013

Used under license from Shutterstock.com

REMINGTON®

PROFESSIONAL SILK WAVING WAND



CI96Z1

Register online for
£10,000 prize draw
EXTRA year guarantee
FREE rewards gallery

Visit www.productregister.co.uk/remington.
You must register within 28 days
of purchase.

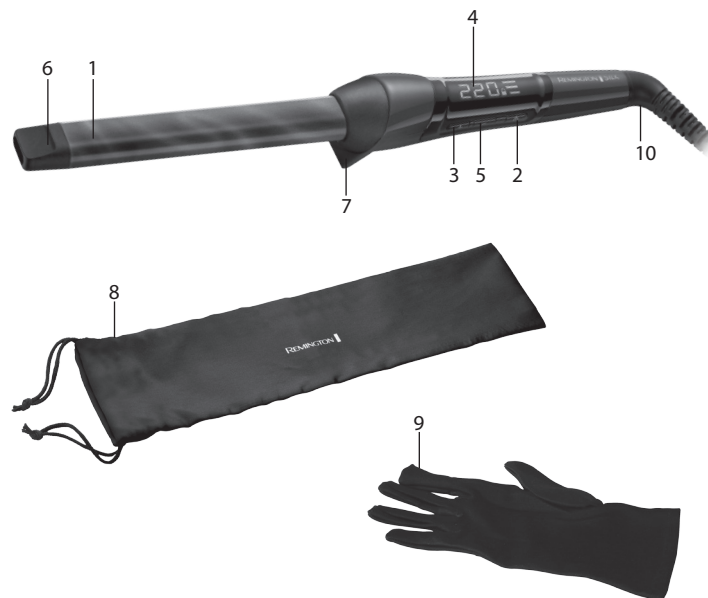


Thank you for buying your new Remington® product.
Please read these instructions carefully and keep them safe. Remove all packaging before use.
Claim your extra 1 year warranty by registering your product online.
Simply go to: www.productregister.co.uk/remington

SAFETY INSTRUCTIONS

- 1 This appliance can be used by children aged from 8 years and above and persons with reduced physical, sensory or mental capabilities or lack of experience and knowledge if they have been supervised/instructed and understand the hazards involved. Children shall not play with the appliance. Cleaning and user maintenance shall not be done by children unless they are older than 8 and supervised. Keep the appliance and cable out of reach of children under 8 years.
- 2 Always ensure the voltage to be used corresponds to the voltage stated on the unit before plugging the appliance into the mains socket.
- 3 Warning: Do not use this appliance near bathtubs, showers, basins or other vessels containing water.
- 4 When the appliance is used in a bathroom, unplug it after use since the proximity of water presents a hazard even when the hairdryer is switched off.
- 5 Do not wrap the cord around the unit. Check the cord regularly for any sign damage.
- 6 If the supply cord of this unit becomes damaged, discontinue use immediately and return the appliance to your nearest authorised Remington® service dealer for repair or replacement in order to avoid a hazard.
- 7 Do not use the appliance if it is damaged or malfunctions.
- 8 Do not allow any part of the appliance to touch the face, neck or scalp.
- 9 Do not leave the appliance unattended while plugged in.
- 10 Only set the appliance down on a heat-proof surface.
- 11 Do not place the appliance down on any soft furnishings.
- 12 Do not use attachments other than those we supply.
- 13 This appliance is not intended for commercial or salon use.
- 14 Let the appliance cool down before cleaning and storing away.

SILK WAVING WAND



KEY FEATURES

- | | |
|----------------------------------|---|
| 1 Silk Ceramic Elliptical barrel | 6 Cool tip |
| 2 On-off switch | 7 Stand |
| 3 Temperature controls | 8 Heat resistant pouch |
| 4 Temperature display | 9 Heat resistant glove – first line protection only |
| 5 Temperature lock function | 10 Swivel cord |

PRODUCT FEATURES

- Silk Ceramic Coating for silky-smooth results.
- High heat - 120°C to 220°C.
- Fast heat up - ready in 30 seconds.
- Automatic safety shut off – this unit will switch itself off if no button is pressed or it is left on after 60 minutes.
- Multivoltage: for home or abroad. At 120V times and temperatures may vary.
- 5 year guarantee.

INSTRUCTIONS FOR USE

- 1 Before use, ensure the hair is clean, dry and tangle-free.
- 2 For extra protection use a heat protection spray.
- * Hairsprays contain flammable material – do not use while using this product.
- 3 Section the hair prior to styling. Style the lower layers first.
- 4 Plug the product into the mains power supply.
- 5 Press and hold the on button to switch on.
- 6 Start styling on lower temperatures first. Select appropriate temperature for your hair type using the controls on the side of the product. '+' increases the temperature '-' decreases the temperature.

* Recommended temperatures:-

Temperature	Hair type
120°C - 170°C	Thin/ Fine, damaged or bleached hair
170°C - 200°C	Normal, healthy hair
200°C - 220°C	Thick, very curly and difficult to style hair

Caution: The hottest temperatures should only be used by experienced stylists.

- 7 The digital display will stop flashing when the product is ready to use.
- 8 Use heat resistant glove to avoid any accidental burns.
- 9 Hold the handle and wrap a section of hair around the heated barrel.
- 10 Wait about 10 seconds for curl to form.
- 11 Unwind the hair and release the curl.
- 12 Let the hair to cool before styling.
- 13 Repeat this around the head to create as many curls as desired.
- 14 After use, press and hold the off button to turn off then unplug the appliance.