

REMINGTON®
style

Flexibrush Steam

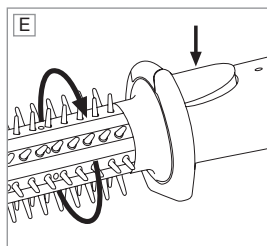
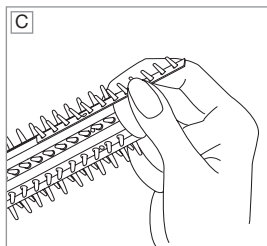
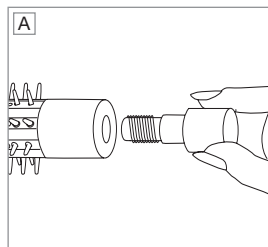


CB4N



REMINGTON

Flexibrush Steam



ENGLISH

Thank you for buying your new Remington® product. Before use, please read these instructions carefully and keep them in a safe place for future reference.



PRODUCT FEATURES

- A** Reservoir: Unscrew and fill with water, then press to activate steam
 - B** Bristle Lock Guard: When removed enables bristles to be slid on or off barrel. When in place it acts as a guard and locks bristles into place
 - C** Heat Resistant Bristles: Two sets of soft, removable bristles that remain cool to touch
 - D** On indicator light
 - E** Curl Release: Depressing the button allows free rotation of the barrel
 - F** Heel Rest: Prevents any part of the heated barrel from touching surface area when resting
 - G** Swivel Cord
 - H** Multivoltage: For use at home or abroad
The unit will automatically convert from 220/240v to 120 volts
- 2 year guarantee



INSTRUCTIONS FOR USE

- ▶ Before use make sure hair is clean, dry and tangle free.
- ▶ Remington Flexibrush can be used without steam. When steam is required first fill the water reservoir.
- ▶ Hold the unit in a vertical position with cap end down to prevent any spillage from any residual water left in the cap.
- ▶ Unscrew the reservoir and fill with warm or cool water to the fill line. Replace the cap with the tong still held vertically with cap end down and twist gently into place.
- ▶ Plug the unit into the mains and wait for about 5 minutes.
- ▶ To activate steam, gently depress the cap. The unit is designed to release with one push, just the right amount of steam required for a small section of hair.
- ▶ Separate the section of hair to be curled and wrap around the hot barrel, winding up exactly as you would use a roller.
- ▶ Press reservoir cap to release the steam. Hold the Flexibrush in place for about 8-12 seconds – then press the curl release button and carefully draw the unit away allowing hair to unwind automatically. Let curls spring back and cool before combing.
- ▶ To change the bristles, the unit must be unplugged and cool. Unscrew the Bristle Lock Guard (B) and slide the bristles off the barrel. Taking the other set of bristles, gently glide each row into a groove on the barrel and push into place. Screw the lock guard securely back into place.

ENGLISH



IMPORTANT INSTRUCTIONS

- ▶ Due to the extreme heat capabilities of this styler, extra care should be taken when using.
- ▶ While heating and cooling, place on flat, smooth, heat-resistant surface. Only hold unit at the end of the handle.
- ▶ Please note regular use of styling products may deteriorate the coating.
- ▶ Do not scratch the surface, as this will deteriorate the effectiveness of the coating.
- ▶ Do not allow water from the reservoir cap to spill onto the handle.



CLEANING AND MAINTENANCE

Ensure the unit is unplugged and cool. Wipe clean any build up of styling products with a damp cloth. Do not use an abrasive cleaning fluid to clean, as damage will occur.



SAFETY CAUTIONS

WARNING – FOR ADDITIONAL PROTECTION THE INSTALLATION OF A RESIDUAL CURRENT DEVICE (RCD) WITH A RATED RESIDUAL OPERATING CURRENT NOT EXCEEDING 30mA IS ADVISABLE. ASK AN ELECTRICIAN FOR ADVICE.

WARNING – THIS APPLIANCE MUST NOT BE TAKEN INTO A BATHROOM. IT SHOULD NOT BE USED NEAR BATHTUBS, SHOWERS, BASINS OR OTHER VESSELS CONTAINING WATER OR OTHER LIQUIDS.



This product is not suitable for use in bath or shower.

THE STYLER SHOULD BE UNPLUGGED FROM MAINS SUPPLY WHEN NOT IN USE

- ▶ Do not leave the styler unattended when switched on.
- ▶ Allow the styler to cool down before storage.
- ▶ Do not immerse in water or other liquids.
- ▶ Do not place styler on soft material e.g. carpet, bedding, towels, rugs etc.
- ▶ Keep this product out of reach of children. The use of this appliance by persons with reduced physical, sensory or mental capabilities or lack of experience and knowledge can give cause to hazards. Persons responsible for their safety should give explicit instructions or supervise the use of the appliance.

ENGLISH

- ▶ Do not use any attachments with this styler, other than those supplied by Remington®.
- ▶ Do not wrap the cord around the unit. Check cord regularly for any sign of damage.
- ▶ This product is not intended for commercial or salon use.
- ▶ Damaged cords can be dangerous. If the supply cord of this unit becomes damaged, discontinue use immediately and return the appliance to your nearest authorised Remington® service dealer for repair or replacement in order to avoid a hazard.
- ▶ Special tools are required for any examination, adjustment or repair. Unqualified repair work could lead to hazardous conditions for the user.
- ▶ We do not accept responsibility for damage to the product, persons or other items(s), caused by misuse, abuse or non-compliance with these instructions.

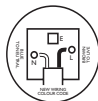


WIRING INSTRUCTIONS UK Plugs Only

This product is fitted with a BS1363 plug fused at 13A. If the plug is unsuitable, it should be disconnected and an appropriate plug fitted as detailed below. If it is necessary to replace the plug fuse, use only fuses that are approved to BS1362, rated at 5A. If in doubt consult a qualified electrician.

The wires in the mains lead are coloured in accordance with following code:

BLUE – NEUTRAL
BROWN – LIVE



As the colours of the wires in the mains lead of this appliance may not correspond with the coloured markings identifying the terminals in your plug, proceed as follows:-

The wire which is coloured BLUE must be connected to the terminal which is marked 'N' or coloured BLACK. The wire which is coloured BROWN must be connected to the terminal which is marked 'L' or coloured RED. Never connect either of the wires to the big EARTH terminal marked 'E' or coloured GREEN or GREEN AND YELLOW.



SERVICE AND WARRANTY

This product has been checked and is free of defects. We warrant this product against any defects that are due to faulty material or workmanship for the warranty period from the original date of consumer purchase. If the product should become defective within the warranty period, we will repair any such defect or elect to replace the product or any part of it without charge provided there is proof of purchase. This does not mean an extension of the warranty period.

In the case of a warranty simply call the Remington® Service Center in your region. This warranty is offered over and above your normal statutory rights.



ENGLISH

The warranty shall apply in all countries in which our product was sold via an authorised dealer.

This warranty does not include damage to the product by accident or misuse, abuse, alteration to the product or use inconsistent with the technical and/or safety instructions required. This warranty shall not apply if the product has been dismantled or repaired by a person not authorised by us.

For further information and advice please contact:
Customer Services Department. Rayovac Europe Ltd, Watermans House, Watermans Court, Kingsbury Crescent, The Causeway, Staines, Middlesex, TW18 3BA. Tel: 0800 212 438 Fax: +44 (0) 1784 411 412



For further information on recycling see www.remington-europe.com



REMINGTON® SERVICE HOTLINE

United Kingdom

 **+44 0800 212 438 (free call)**

Rayovac Europe Ltd,
Watermans House, Kingsbury Crescent,
The Causeway, Staines, Middlesex,
TW18 3BA, UNITED KINGDOM

www.remington.co.uk





Model No. CB4N

09/UK/CB4N Version 03/09 Part No. T22-27865

REMINGTON® Registered Trade Mark of Spectrum Brands, Inc.,
or one of its subsidiaries

VARTA® Consumer Batteries GmbH & Co. KGaA

Alfred-Krupp-Str.9

73479 Ellwangen

Germany

www.remington-europe.com

© 2009 SBI

This product is not suitable for use in bath or shower.

