

REMINGTON®

HyperFlex



GUARANTEE ⁺¹
2 yr

XR1340G

**Register online for
£10,000 prize draw
EXTRA year guarantee
FREE rewards gallery**



Visit www.remington.co.uk/product/register.
You must register within 28 days
of purchase.

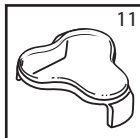
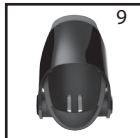
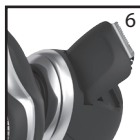
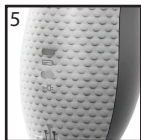
Thank you for buying your new Remington® product. Please read these instructions carefully and keep them safe. Remove all packaging before use.



IMPORTANT SAFEGUARDS

- 1 WARNING – TO REDUCE THE RISK OF BURNS, ELECTROCUTION, FIRE, OR INJURY TO PERSONS:**
- 2 Use this appliance only for its intended use as described in this manual. Do not use attachments not recommended by Remington®.
- 3 Do not use this product if it is not working correctly, if it has been dropped or damaged, or dropped in water.
- 4 An appliance should never be left unattended when plugged in to a power outlet, except when charging.
- 5 Keep the power plug and cord away from heated surfaces.
- 6 Make sure the power plug and cord do not get wet.
- 7 Do not plug or unplug the appliance with wet hands.
- 8 Do not use the product with a damaged cord. A replacement can be obtained via our International Service Centres.
- 9 Do not twist or kink the cable and don't wrap it around the appliance.
- 10 Store the product at a temperature between 15°C and 35°C.
- 11 Only use the parts supplied with the appliance.
- 12 The appliance, including its cord, must not be used, played with, cleaned or maintained by persons under eight years old and should at all times be kept out of their reach.
- 13 Use, cleaning or maintenance of the appliance by children over eight or by anyone with a lack of knowledge, experience or with reduced physical, sensory or mental capabilities should only be undertaken after receiving appropriate instruction and under the adequate supervision of a responsible adult to ensure that they do so safely and that the hazards involved are understood and avoided.
- 14 Suitable for use in a bath or shower. A circular icon showing a person sitting in a shower.

HyperFlex



KEY FEATURES

- 1 On / Off Switch
- 2 Head and Cutter assembly
- 3 Individual flexing heads
- 4 Hairpocket
- 5 Charging indicator light & low battery indicator

- 6 Detail trimmer
- 7 Trimmer button
- 8 Charging pins
- 9 Charging stand
- 10 Adaptor
- 11 Headguard
- 12 Cleaning brush

👁 GETTING STARTED

For best shaving performance, it is recommended that you use your new shaver daily for up to four weeks to allow time for your beard and skin to become accustomed to the new shaving system.

★ CHARGING STAND

- Rotate open the charge stand fully to stand firmly on a flat surface while charging. For travel you can fold the stand around the shaver (see below).



★ CHARGING YOUR SHAVER

- Ensure the appliance is turned off.
- Connect the charging stand to the adaptor and then to the mains.
- Place the shaver in the charging stand.
- Charge for at least 24 hours when using for the first time.
- Allow 4 hours for a full charge. The charging indicator light will indicate when the shaver is fully charged.
- ★ When charge is low, the top LED will illuminate a solid red light. When charging the bottom LED will illuminate a solid green light. When fully charged both LED's will be off.
- To preserve the life of your batteries, let them run out every 6 months then recharge for 24 hours.
- The shaver automatically adjusts to a mains voltage between 100V and 240V.
- ◆ This appliance should be charged by approved safety isolating adaptors PA-0510K with the output capacity of 5.0V dc; 1.0A.

HOW TO USE


SHAVING

Note: This shaver is for cordless use only.

- Make sure your shaver is properly charged.
- Switch the shaver on.
- Stretch the skin with your free hand so the hairs stand upright
- Only apply light pressure on the shaving head while shaving (pressing too hard can damage the heads and make them vulnerable to breakage).
- Use short, circular strokes.

SHAVING WITH SHAVING GEL

- Follow the same instructions as dry shaving if using with gel.

 **CAUTION:** After use with shaving gel, please rinse the head and cutters under warm water to clean away any excess gel and debris.

TRIMMING

- Push the trimmer button to release the detail trimmer.
- Hold the trimmer at right angles to the skin.
- Place the trimmer at desired trim line for a quick, easy, professional trim.
- To retract and switch off the trimmer, push the trimmer down and lock into place.

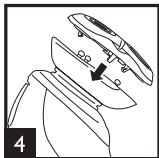
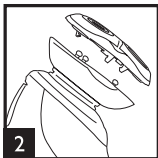
Tips for best results

- Use moderate to slow stroking movements. The use of short circular motions in stubborn areas may obtain a closer shave, especially along the neck and chin line.
- **DO NOT** press hard against the skin in order to avoid damage to the rotary heads.

CARE FOR YOUR SHAVER

Care for your appliance to ensure a long lasting performance. We recommend you clean your appliance after each use. The easiest and the most hygienic way to clean the appliance is by rinsing the appliance head after use with warm water.

CLEANING



- Pull the rotary shave face off the hair pocket (Fig. 1 and 2).
- Tap out excess hair shavings from the hair pocket (Fig.3). Hair clippings can also be washed out of the hair pocket and or shave face by rinsing these under the tap.
- Once dry, snap the shave face back onto the hair pocket (Fig. 4).

*** CLEANING TRIMMER**

- Lubricate the teeth of the trimmer every six months with a drop of sewing machine oil.
- Replacement parts and accessories available to buy at www.remington.co.uk/parts-accessories



ENVIRONMENTAL PROTECTION

To avoid environmental and health problems due to hazardous substances in electrical and electronic goods, appliances marked with this symbol must not be disposed of with unsorted municipal waste, but recovered, reused or recycled.



BATTERY REMOVAL

- The battery must be removed from the appliance before it is scrapped.
- The appliance must be disconnected from the mains supply when removing the battery.
- Run shaver until the motor stops.
- Remove the head from the shaver (pull head up and off).
- Using a small screwdriver, pry the 'collar' off of the top of the handle.
- Using a small screwdriver, pry the front cover from the body.
- Remove three screws located on front of shaver.
- Using a small screw driver, pry up the newly unsecured inner housing to expose the battery.
- Pry battery free from circuit board.
- Dispose of battery properly.



SERVICE AND GUARANTEE

Defects affecting product functionality appearing within the guarantee period will be corrected by replacement or repair at our option provided the product is used and maintained in accordance with the instructions.

Defects from repair by an unauthorized dealer are not covered.

Consumables are excluded.

Your statutory rights are not affected.


If you call the Service Centre, please have the Model No. to hand, as we won't be able to help you without it. The Model No. can be found on the rating plate of the appliance.

Replacement parts and accessories are available to buy at

www.remington.co.uk/parts-accessories

SERVICE CENTRE

United Kingdom

 Tel 0345 6460 438 (free call mainland UK)

 +44 161 947 3111 (call outside the UK)

Spectrum Brands (UK) Ltd

Fir Street, Failsworth, Manchester

M35 0HS, UK

www.remington.co.uk

Ireland

 Tel 142 951 40

Remington Consumer Products,

Unit B12, Ballymount Corporate Park,

Ballymount, Dublin 12.

www.remington.co.uk

REGISTER ONLINE FOR

£10,000 prize draw, EXTRA year guarantee, FREE rewards gallery.

Visit www.remington.co.uk/productregister. You must register within 28 days of purchase.

Model No. XR1340G

15/UK/ XR1340G T22-0003095 Version 03 /15

Remington® is a Registered Trade Mark of Spectrum Brands, Inc., or one of its subsidiaries.
Spectrum Brands (UK) Ltd

Fir Street,
Failsworth,
Manchester
M35 0HS

www.remington.co.uk
© 2015 SBI