



**REMINGTON®**  
style inspirations

STYLIST

MULTI STYLE 210°C



S6600



**ADVANCED  
CERAMIC**

2x smoother glide  
3x longer lasting

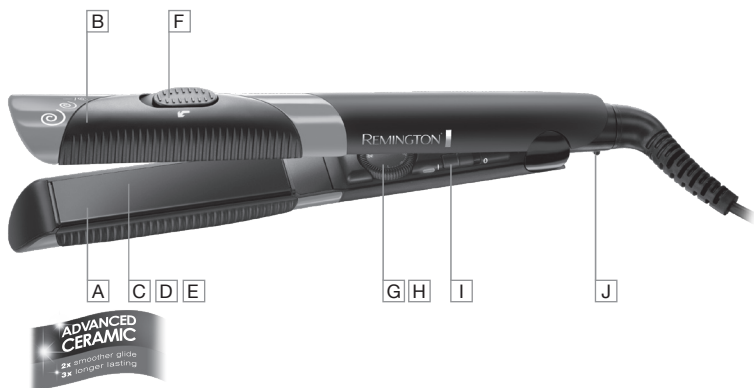
vs. standard  
ceramic coating



REMINGTON®  
style inspirations

# STYLIST

MULTI STYLE 210°C



K



# ENGLISH

**Thank you for buying your new Remington® product. Before use, please read the instructions for use carefully and keep them in a safe place for future reference.**



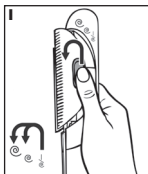
## PRODUCT FEATURES

- A** Advanced Ceramic Coating for extra smooth glide and longer lasting plates
- B** Designed with curl bars to create endless styles effortlessly
- C** High heat 150 – 210°C
- D** Fast heat up and ready for use in 15 seconds
- E** Longer length slim 100mm plates
- F** Curl bar switch
- G** Variable heat wheel – 30 settings
- H** Recommended temperatures to suit hair types...  
150°C - 180°C – Fine Hair  
180°C - 200°C – Medium Hair  
200°C - 210°C – Thick Hair
- I** Automatic safety shut off – if no buttons have been pressed after 60 minutes the straightener will automatically turn off
- J** Hinge lock for storage :- Plates can be shut together for easy storage
  - Locked- Push the hinge lock up to the locked position
  - Unlocked- Pull the hinge lock down to the unlocked position

NOTE: Do not heat the unit in the locked position
- K** Heat proof pouch
- L** Multi-voltage: For use at home or abroad.  
When used at 120V the heat up times and temperatures may vary.



## INSTRUCTIONS FOR USE



### Step 1

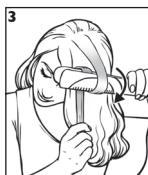
Push the button down, then move forward and to the left to select desired curl setting.



### Step 2

Place curl bars facing the root.

# ENGLISH



## Step 3

Turn the iron 180 degrees.



## Step 4

Slide down the hair.



## Straight & Small curl (Fig 1)

- ▶ Before use, make sure hair is clean, dry and tangle-free.
- ▶ Before turning on and using please select the desired curl bar setting using the switch on both sides of the styler.
- ▶ Plug in the unit and set to your desired temperature.
- ▶ For extra protection and best results, section hair prior to straightening and spray with heat protection spray. Always straighten the lower layers first.
- ▶ Run the straightener through the entire length of the hair, without stopping for an even and sleek finish.
- ▶ For small curls, wrap a section round the styler whilst rotating. Gently move the styler to the tips, curling the hair as you go.
- ▶ Repeat only twice per section to prevent hair damage.
- ▶ Remove styler and holding the hair length, allow the curl to spring into shape.



## Medium curl (Fig 2)

- ▶ Push the switches up and outwards and click into the 1st extended position.
- ▶ Firmly grip a section of hair between the plates, close to the roots.
- ▶ Keeping tension firm gently rotate the styler whilst pulling through the length of the hair section to the tips using the curl guides to grip and shape the curl as you style.
- ▶ Make sure to keep rotating the styler.
- ▶ Remove styler and holding the hair length, allow the curl to spring into shape.
- ▶ Repeat in sections until all hair is curled.

## ENGLISH

Fig 3



### Large loose curl (Fig 3)

- ▶ Push the switches up and out towards the 2nd extension position.
- ▶ Firmly grip a section of hair between the plates, close to the roots.
- ▶ Keeping tension firm gently rotate the styler whilst pulling through the length of the hair section to the tips using the curl guides to grip and shape the curl as you style.
- ▶ Make sure to keep rotating the styler.
- ▶ Remove styler and whilst holding the hair allow the curl to spring into shape, to maximise volume spray hair with finishing spray.
- ▶ To create luscious waves gently tease out the curls with a tail comb.



## IMPORTANT INSTRUCTIONS

- ▶ Due to high heat capabilities of the straightener do not try to extend the curl bars while in use. This is a high performance product; avoid frequent use to prevent damage to hair.
- ▶ Due to the extreme heat capabilities of this straightener, extra care should be taken when using.
- ▶ For shorter hair, place a plastic comb between scalp and iron to avoid touching scalp.
- ▶ Do not leave switched on for more than 30 minutes.
- ▶ Before use, make sure hair is clean, dry and tangle-free.
- ▶ While heating, during use and cooling, place on flat, smooth, heat-resistant surface.
- ▶ Only hold unit at the end of the handle. Avoid touching the tips.
- ▶ Do not style too close to scalp, face, ears, neck and skin.
- ▶ Please note regular use of styling products may deteriorate the advanced ceramic coating. Wipe clean regularly to maintain performance.
- ▶ Do not use an abrasive cleaning fluid to clean the advanced ceramic coated plates, as damage will occur. Use a soft damp cloth on the unit while unplugged.
- ▶ Do not scratch the surface of the plates as this will deteriorate the effectiveness of the ceramic coating.



## CLEANING AND MAINTENANCE

Ensure the unit is unplugged and cool. Clean the outside of the handle with a slightly damp cloth. Wipe the plates clean of styling products with damp cloth. No other maintenance of advanced ceramic coating is required.

ENGLISH



## SAFETY CAUTIONS

**WARNING – FOR ADDITIONAL PROTECTION THE INSTALLATION OF A RESIDUAL CURRENT DEVICE (RCD) WITH A RATED RESIDUAL OPERATING CURRENT NOT EXCEEDING 30mA IS ADVISABLE. ASK AN ELECTRICIAN FOR ADVICE.**

**WARNING – THIS APPLIANCE MUST NOT BE TAKEN INTO A BATHROOM. IT SHOULD NOT BE USED NEAR BATHTUBS, SHOWERS, BASINS OR OTHER VESSELS CONTAINING WATER OR OTHER LIQUIDS.**



This product is not suitable for use in bath or shower.

**THE STYLER SHOULD BE UNPLUGGED FROM MAINS SUPPLY WHEN NOT IN USE.**

- ▶ Do not leave the styler unattended when switched on.
- ▶ Allow the styler to cool down before storage.
- ▶ Do not immerse in water or other liquids.
- ▶ Do not place styler on soft material e.g. carpet, bedding, towels, rugs etc.
- ▶ Always ensure the voltage to be used corresponds to the voltage stated on the unit.
- ▶ Keep this product out of reach of children. The use of this appliance by persons with reduced physical, sensory or mental capabilities or lack of experience and knowledge can give cause to hazards. Persons responsible for their safety should give explicit instructions or supervise the use of the appliance.
- ▶ Do not use any attachments with this styler, other than those supplied by Remington®.
- ▶ Avoid allowing any part of the hot plates to contact the face, neck or scalp.
- ▶ Do not wrap the cord around the unit. Check cord regularly for any sign of damage.
- ▶ This product is not intended for commercial or salon use.
- ▶ Damaged cords can be dangerous. If the supply cord of this unit becomes damaged, discontinue use immediately and return the appliance to your nearest authorised Remington® service dealer for repair or replacement in order to avoid a hazard.
- ▶ Special tools are required for any examination, adjustment or repair. Unqualified repair work could lead to hazardous conditions for the user.
- ▶ We do not accept responsibility for damage to the product, persons or other items(s), caused by misuse, abuse or non-compliance with these instructions.



## PROTECT THE ENVIRONMENT

Do not dispose of the product in household waste at the end of its life. Disposal can take place at the Remington® Service Centre or appropriate collection sites.



For further information on recycling see [www.remington-europe.com](http://www.remington-europe.com)

## ENGLISH



### WIRING INSTRUCTIONS UK Plugs Only

This product is fitted with a BS1363 plug fused at 13A. If the plug is unsuitable, it should be disconnected and an appropriate plug fitted as detailed below. If it is necessary to replace the plug fuse, use only fuses that are approved to BS1362, rated at 13A. If in doubt consult a qualified electrician.

The wires in the mains lead are coloured in accordance with following code:

BLUE - NEUTRAL

BROWN - LIVE



As the colours of the wires in the mains lead of this appliance may not correspond with the coloured markings identifying the terminals in your plug, proceed as follows:

The wire which is coloured BLUE must be connected to the terminal which is marked 'N' or coloured BLACK. The wire which is coloured BROWN must be connected to the terminal which is marked 'L' or coloured RED. Never connect either of the wires to the big EARTH terminal marked 'E' or coloured GREEN or GREEN AND YELLOW.



### SERVICE AND WARRANTY

This product has been checked and is free of defects. We warrant this product against any defects that are due to faulty material or workmanship for the warranty period from the original date of consumer purchase. If the product should become defective within the warranty period, we will repair any such defect or elect to replace the product or any part of it without charge provided there is proof of purchase.

This does not mean an extension of the warranty period.

In the case of a warranty simply call the Remington® Service Center in your region.

This warranty is offered over and above your normal statutory rights.

The warranty shall apply in all countries in which our product was sold via an authorised dealer.

This warranty does not include damage to the product by accident or misuse, abuse, alteration to the product or use inconsistent with the technical and/or safety instructions required. This warranty shall not apply if the product has been dismantled or repaired by a person not authorised by us.



### REMINGTON® SERVICE HOTLINE

#### United Kingdom



**+44 0800 212 438 (free call)**

**Spectrum Brands (UK) Limited**

**Fir Street, Failsworth, Manchester, M35 0HS, UK.**

**Email: [uk.service@remington.co.uk](mailto:uk.service@remington.co.uk)**

**[www.remington.co.uk](http://www.remington.co.uk)**



## Model No. S6600

11/UK /S6600      Version 01/11    Part No.T22-31628  
REMINGTON® Registered Trade Mark of Spectrum Brands, Inc.,  
or one of its subsidiaries

VARTA Consumer Batteries GmbH & Co. KGaA  
Alfred-Krupp-Str.9  
73479 Ellwangen  
Germany

UK & Ireland:  
Spectrum Brands (UK) Ltd.  
Fir Street  
Failssworth  
Manchester  
M35 0HS  
England

[www.remington-europe.com](http://www.remington-europe.com)  
© 2011 SBI

This product is not suitable for use in bath and shower

