

REMINGTON®

5-in-1 CORDLESS EPILATOR

smooth & silky®



EP7030



£10,000 prize draw
EXTRA year guarantee
FREE Rewards Gallery
www.productregister.co.uk/remington
Register online now!
See back for details

Thank you for buying your new Remington® product.

Before use, please read these instructions carefully and keep them safe. Remove all packaging before use.

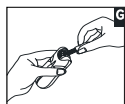
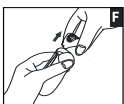
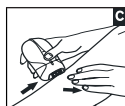
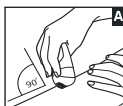
Claim your extra 1 year warranty by registering your product online.

Simply go to: www.productregister.co.uk/remington

IMPORTANT SAFEGUARDS

WARNING – TO REDUCE THE RISK OF BURNS, ELECTROCUTION, FIRE OR INJURY TO PERSONS:

- Use this appliance only for its intended use as described in this manual.
- Do not use the appliance if it is damaged or malfunctions.
- Do not leave the appliance unattended while plugged in.
- Keep the power plug and cord away from heated surfaces.
- Do not use the product with a damaged cord. A replacement can be obtained via our International Service Centres.
- Store the product at a temperature between 15° and 35°.
- Only use the parts supplied with the appliance.
- Do not wrap the cord of the charging adaptor around the appliance.
- This product is for cordless use only. Do not use your epilator while it is plugged into the mains.
- Always unplug from the mains when cleaning or when being used under running water.
- This appliance can be used by children aged from 8 years and above and persons with reduced physical, sensory or mental capabilities or lack of experience and knowledge if they have been supervised/instructed and understand the hazards involved. Children shall not play with the appliance. Cleaning and user maintenance shall not be made by children unless they are older than 8 and supervised.
- Keep the appliance and cable out of reach of children under 8 years.
- Do not use this appliance with a damaged or broken tweezer barrel as injury may occur.
- This appliance should be supplied with approved safety isolating adaptors PA-0510E (for Europe) and PA-0510U (for United Kingdom) with the output capacity of 5 dc; 1000mA (adaptor output).



KEY FEATURES

- 1 Tweezers
- 2 Perfect Angle Cap
- 3 Removable and Washable Head
- 4 Pivoting Head
- 5 Precision Light
- 6 On/Off Switch – 2 Speeds
- 7 Low Battery/Charging Indicator Light
- 8 Power Inlet
- 9 Head Release Button
- 10 Anti Slip Grip
- 11 Detail Cap
- 12 Massage Cap with Aloe Vera
- 13 Shaver Head
- 14 Bikini Comb
- 15 Cleaning Brush (not shown)
- 16 Beauty Bag (not shown)
- 17 Power Cord (not shown)

GETTING STARTED

Be patient when first using your epilator as with any new product, it may take a little while to familiarise yourself with the product. Take the time to acquaint yourself with your shaver, as we are confident you will receive years of enjoyable use and complete satisfaction.

INSTRUCTIONS FOR CHARGING

- Always ensure that your hands, epilator and adaptor are dry before charging.
- Before using your Remington® epilator for the first time, charge for 4 hours for initial use and for every charge thereafter. One full charge allows 40 minutes of cordless usage time.
- Ensure the product is switched off and attach the mains adaptor to the epilator.
- The charging indicator will illuminate green while charging.
- Charge for the time indicated above.
- The epilator will be fully charged when the green light goes off.
- Use the product until the battery is low. This is indicated by a red indicator light.

NOTE: This product is for cordless use only. The epilator cannot be turned on while it is charging. Do not try to use the epilator while it is plugged into the mains.

Your epilator cannot be overcharged, however, if the product is not going to be used for an extended period (2-3 months), unplug it from the mains and store. Fully recharge your appliance when you want to use it again.

GENERAL INFORMATION ON EPILATION

This Remington® epilator has been designed to make the removal of unwanted hairs as efficient, gentle and easy as possible.

The rotating tweezers catch even the shortest hairs (minimum length 0.5mm) and pull them out by the root. The hairs that grow back are soft and thin. Epilating leaves your skin smooth and hair-free for several weeks.

If you have not used an epilator before, or if you have not epilated for a long period of time, it may take a short while for your skin to adapt to epilation. The discomfort experienced at first is considerably reduced with repeated use as the skin adjusts to the process.

Using an epilator may cause reddening or irritation of the skin. This is a normal reaction that will quickly disappear. However, you should consult your doctor if the irritation has not disappeared within three days.

All methods of hair removal from the root can result in in-growing hair depending on the condition of the skin and hair. Regular exfoliation helps to prevent in-growing hair.

In some cases inflammation of the skin could occur when bacteria penetrate the skin (e.g. when sliding the appliance over the skin). Thorough cleaning of the epilation head before each use will minimise the risk of infection.



HOW TO USE



This epilator is suitable for wet or dry use and may be used in the shower.



This epilator operates cordless only.



Useful Tips

- When using an epilator for the first time it is best to try it on a small area to get used to the process of epilation.
- The optimum length for hair removal is between 2-5mm. Epilation is easier and more comfortable.
- Take a warm bath or shower before epilating and exfoliate to remove dead skin cells. This will make your skin more pliable, making the epilation process less uncomfortable.
- Epilate in the evening so that any possible reddening can disappear overnight.
- After use you can use a body cream or aloe lotion to soothe the skin and reduce skin irritation.
- Exfoliate regularly to avoid in-growing hair.

Why Exfoliate?

Exfoliation prevents in-growing hairs. Ingrown hairs occur when the growing hair curls up under the skin instead of growing out like it should. It results in an often painful red bump and possible infections. Rubbing your skin with an exfoliation glove in the shower or bath, or using a dry body brush will help reduce ingrown hairs or infections.

Wet Use:

Ensure the skin is moist. For added comfort, shower gel can be added to the skin during use. It is best to try different methods to determine your preferred method of epilation.

NOTE: After each wet use with shower gel, clean the epilator under running water.

Dry Use:

Before epilating make sure that the skin is clean, dry and free from creams or oils. Rub the skin in the area to be epilated to lift short hairs to optimise hair removal.

Turn the epilator on to the desired speed:

LOW is recommended for fine hair

HIGH is recommended for coarse hair or stronger hair growth

Using your free hand, hold the skin taut to make the hairs stand upright.

Position the epilator flat so that the tweezers are at a 90° angle and flat against the skin. The Perfect Angle Cap will ensure the optimum tweezing angle (Diagram A).

Using small circular motions, slowly and gently glide the epilator over the skin. This circular motion is the most effective method and makes the process less uncomfortable. Alternatively, guide the epilator in a slow, continuous movement against the hair growth (Diagram B).

Repeat within each area until all unwanted hair is removed.

After epilating, turn the epilator off.

✱ **ARM/LEG EPILATION: (Diagram C)**

Epilate from the lower arm/leg and slowly move upwards. To epilate behind the elbow/knee, keep the arm/leg straight to stretch the skin.

✱ **UNDERARMS AND BIKINI: (Diagram D and E)**

Please be aware that these areas are particularly sensitive. However this sensitivity will reduce after repeated usage. For more comfort, ensure that the skin is held taut and that the hair is at the optimum length of 2-5mm. If it has been an extended period of time since you have removed hair, trim the hair with the Bikini Comb Attachment before epilation. It is recommended to use LOW speed or Detail Cap for these sensitive areas.

✱ **FACIAL EPILATION**

- Use the Detail Cap.
- Place the epilator at a 90° angle to the skin and move the epilator head in a circular motion.

NOTE: Do not use for removing hair from the eyebrow.

Keep the product away from hair on the scalp, eyebrows and eyelashes.

✱ **PRECISION LIGHT**

- The precision light is incorporated into the ON/OFF switch to help to see every hair.

✱ **EXFOLIATING GLOVE**

- Use the exfoliating glove in the bath or shower to remove dead skin cells from the surface and help prevent ingrowing hairs.
- Wet the glove and your skin with warm water.
- Apply a few drops of liquid soap or exfoliating scrub directly onto the glove.
- Using gentle pressure, massage your skin in small circular motions.
- Avoid sensitive areas such as near the eyes.

✱ **DETAIL CAP**

The detail cap is designed for small areas (including the face) and spot treatments.

- Ensure the epilator is switched off.
- Remove the Perfect Angle or Massage Cap.
- Place the Detail Cap into the appropriate slots at the top of the epilator.
- Gently press the Detail Cap into place until you hear a "click".

✱ **MASSAGE CAP WITH ALOE VERA**

The Massage Cap is designed for gentler epilation.

- Ensure the epilator is switched off.
- Remove the Perfect Angle or Detail Cap.
- Place the Massage Cap into the appropriate slots at the top of the epilator.
- Gently press the Detail Cap into place until you hear a "click".

✱ **SHAVER HEAD**

The shaver head provides a close shave for sensitive areas.

- Ensure the epilator is switched off.
- Press the head release button and remove the epilator head.
- Attach the shaver head until it clicks into place.
- Hold the shaver head at a 90° angle to the skin and move against the direction of hair growth.

✱ **TRIMMING AND SHAPING**

- Attach the bikini trimmer attachment.
- Hold the shaver at a right angle to your skin and press down gently.
- Edge and shape the areas as desired.

CAUTION

- For your protection your epilator may slow down or even stop if pressed too firmly against the skin.
- Do not use the epilating head on irritated skin or skin with varicose veins, rashes, spots, moles or wounds without consulting a doctor. People with reduced immune response e.g. during pregnancy, or people who suffer from diabetes mellitus, haemophilia or immunodeficiency should also consult their doctor before using this product.
- For hygiene reasons do not let another person use your epilator. It is recommended for use by one person only.

CLEANING AND MAINTENANCE

To ensure long lasting performance of your epilator, clean the head assembly regularly.



This appliance is suitable for use in a bath or shower.



This appliance is showerproof.

Cleaning the epilation head after each use:

- Ensure the appliance is switched off and unplug from the main outlet before cleaning.
- Ensure the epilator is turned off and disconnected from the mains.
- Press the head release button and open the head assembly (Diagram F).
- Turn the head assembly upside down.
- The epilator head can be removed and rinsed for cleaning. For optimal cleaning; brush hairs from the tweezers before rinsing (Diagram G).
- Although the epilator is suitable for use under running water, it is not recommended to submerge the unit under water.

NOTE: Do not completely submerge in water. The epilator head can be submerged after it has been removed from the epilator body.

To remove residue

- To remove residue from the stainless steel tweezers, dampen a swab with alcohol.
- Gently run the swab over the tweezers until the residue has been removed.

CAUTION: Make sure that the cotton swab is not soaked in alcohol as this may damage the epilator.

Cleaning the Shaver Head after each use:

- Ensure the epilator is turned off and disconnected from the mains.
- Press the head release button and remove the shaving head.
- Remove the blade and trimmer assembly by placing your fingers either side of the assembly and pulling upwards.
- Gently shake the blade and trimmer assembly to remove the hair. Use the cleaning brush to brush the trimmers and shaver housing.
- Replace the blade and trimmer assembly.

NOTE: Never use the cleaning brush on the foil as damage may occur.



ENVIRONMENTAL PROTECTION

To avoid environmental and health problems due to hazardous substances in electrical and electronic goods, appliances marked with this symbol mustn't be disposed of with unsorted municipal waste, but recovered, reused or recycled.



BATTERY REMOVAL

The battery must be removed from the appliance before it is scrapped.

The appliance must be disconnected from the mains supply when removing the battery. Remove the epilator head from the unit.

Using a small screwdriver, remove the screw from the bottom of the epilator.

Pry the front panel from the front housing and remove the switch button.

Pull out the inner housing from the top of the unit and expose the PCB and batteries.

Pry the PCB assembly out of the inner housing.

Cut or break the wire stamps on both ends of the batteries and remove the batteries.

The battery is to be disposed of safely.

SERVICE AND GUARANTEE

This product has been checked and is free of defects.

We guarantee this product against any defects that are due to faulty material or workmanship for the guarantee period from the original date of consumer purchase.

If the product should become defective within the guarantee period, we will repair any such defect or elect to replace the product or any part of it without charge, provided there is proof of purchase.

This does not mean an extension of the guarantee period.

In the case of a guarantee simply call the Service Centre in your region.

This guarantee is offered over and above your normal statutory rights.

The guarantee shall apply in all countries in which our product was sold via an authorised dealer.

This guarantee does not include damage to the product by accident or misuse, abuse, alteration to the product or use inconsistent with the technical and/or safety instructions required.

This guarantee shall not apply if the product has been dismantled or repaired by a person not authorised by us.

If you ring the Service Centre, please have the Model No. to hand, as we won't be able to help you without it.

It's on the rating plate which can be found on the appliance.

UNITED KINGDOM



0800 212 438 (free call mainland UK)



+44 161 947 311 (call outside the UK)

Customer Services
Spectrum Brands (UK) Ltd.
Fir Street, Failsworth, Manchester,
M35 0HS, UK
www.remington.co.uk

IRELAND



142 951 40

Remington Consumer Products,
Unit B12,
Ballymount Corporate Park,
Ballymount,
Dublin 12
www.remington.co.uk

12/UK/EP7030 Version 12/12 Part No. T22-0000395
Remington® is a Registered Trade Mark of Spectrum Brands, Inc.,
or one of its subsidiaries
Spectrum Brands (UK) Ltd
Fir Street,
Failsworth,
Manchester
M35 0HS
www.remington.co.uk

© 2012SBI



REGISTER ON FOR:

£10,000 prize draw, EXTRA year guarantee, FREE rewards gallery.
Visit www.productregister.co.uk/remington
You must register within 28 days of purchase.