



REMINGTON®  
style professional

# PEARL™ PRO STYLER

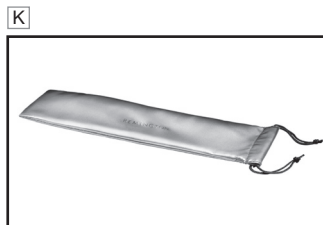


CI9522



REMINGTON®  
style professional

# PEARL™ PRO STYLER



# ENGLISH

**Thank you for buying your new Remington® product. Before use, please read the instructions for use carefully and keep them in a safe place for future reference.**



## PRODUCT FEATURES

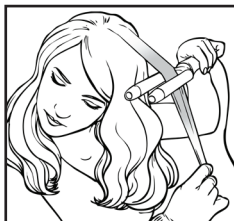
- A** Luxury Pearl ceramic coating
- B** 20mm double barrel styler
- C** Digital display 130 - 210°C
- D** Ready to use in 30 seconds
- E** On/Off switch – plug in the unit, press and hold the on/off switch for 2 seconds to turn on and hold again for 2 seconds to turn off.
- F** Switch lock function – set the desired temperature by pressing +/- and then lock the switch settings by holding down the “-” button for 2 seconds. A “lock” symbol will appear on the display. This will prevent accidentally changing the temperature settings whilst styling. To unlock the switch settings hold down the “-” button again for 2 seconds
- G** Cool tips
- H** Heat protection stand
- I** Automatic safety shut off – The unit will automatically turn itself off if left on after 60 minutes and no button is pressed
- J** Protection glove – First line protection only (not shown)
- K** Heat resistant pouch
- L** 3m salon length swivel cord
- M** Multi-voltage: For use at home or abroad.  
When used at 120V the heat up times and temperatures may vary  
5 year guarantee



## INSTRUCTIONS FOR USE

- ▶ Before use make sure hair is clean, dry and tangle free.
- ▶ Plug in unit, press and hold the on/off button for 2 seconds to turn on. When finished press again for 2 seconds to turn off.
- ▶ For extra protection and best results, section hair prior to styling and spray with heat protection spray.
- ▶ When styling use protection glove provided to avoid any accidental burns and avoid touching the barrels.
- ▶ Unplug from the mains when not in use.

# ENGLISH

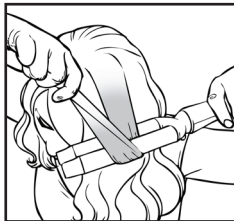


## Step 1

Please be sure to wear the glove provided to avoid burning your hand whilst using the styler. Take a section of hair and place between the two barrels.

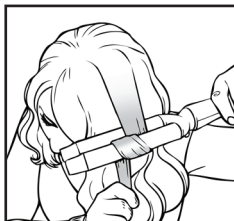
NOTE:

For tighter curls use smaller sections of hair  
For looser curls and waves use larger sections of hair



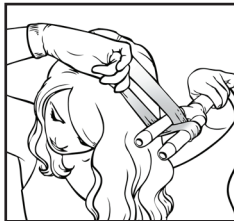
## Step 2

Take the section of hair under and over the barrel furthest away from your head.



## Step 3

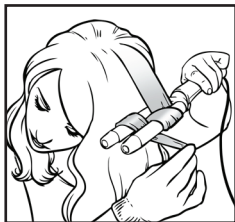
Wrap the section of hair back downwards between the two barrels.



## Step 4

Then wrap the hair under and over the barrel closest to your head making a figure of eight with your hair around the styler.

## ENGLISH



### Step 5

Hold hair in place around the styler for 10 seconds and then release to form the curl. Repeat these steps around the head until all hair is curled.



### IMPORTANT INSTRUCTIONS

- ▶ Due to the extreme heat capabilities of this styler, extra care should be taken when using.
- ▶ While heating, during use and cooling, place on flat, smooth, heat-resistant surface. Only hold unit at the end of the handle.
- ▶ This is a high performance product, avoid frequent use to prevent damage to hair.
- ▶ Please note regular use of styling products may deteriorate the coating.
- ▶ Do not scratch the surface, as this will deteriorate the effectiveness of the coating.



### CLEANING AND MAINTENANCE

Ensure the unit is unplugged and cool. Wipe clean any build up of styling products with a damp cloth. Do not use an abrasive cleaning fluid to clean, as damage will occur.



### SAFETY CAUTIONS

**WARNING – FOR ADDITIONAL PROTECTION THE INSTALLATION OF A RESIDUAL CURRENT DEVICE (RCD) WITH A RATED RESIDUAL OPERATING CURRENT NOT EXCEEDING 30mA IS ADVISABLE. ASK AN ELECTRICIAN FOR ADVICE.**

**WARNING – THIS APPLIANCE MUST NOT BE TAKEN INTO A BATHROOM, IT SHOULD NOT BE USED NEAR BATHTUBS, SHOWERS, BASINS OR OTHER VESSELS CONTAINING WATER OR OTHER LIQUIDS.**



This product is not suitable for use in bath or shower.

**THE STYLER SHOULD BE UNPLUGGED FROM MAINS SUPPLY WHEN NOT IN USE.**

# ENGLISH

- ▶ Glove is not heat resistant. First line protection only
- ▶ Do not leave the styler unattended when switched on.
- ▶ Allow the styler to cool down before storage.
- ▶ Do not immerse in water or other liquids.
- ▶ Do not place styler on soft material e.g. carpet, bedding, towels, rugs etc.
- ▶ Always ensure the voltage to be used corresponds to the voltage stated on the unit.
- ▶ Keep this product out of reach of children. The use of this appliance by persons with reduced physical, sensory or mental capabilities or lack of experience and knowledge can give cause to hazards. Persons responsible for their safety should give explicit instructions or supervise the use of the appliance.
- ▶ Avoid allowing any part of the hot barrel to contact the face, neck or scalp.
- ▶ Avoid allowing any part of the hot plates to contact the face, neck or scalp.
- ▶ Do not wrap the cord around the unit. Check cord regularly for any sign of damage.
- ▶ This product is not intended for commercial or salon use.
- ▶ Damaged cords can be dangerous. If the supply cord of this unit becomes damaged, discontinue use immediately and return the appliance to your nearest authorised Remington® service dealer for repair or replacement in order to avoid a hazard.
- ▶ Special tools are required for any examination, adjustment or repair. Unqualified repair work could lead to hazardous conditions for the user.
- ▶ We do not accept responsibility for damage to the product, persons or other items(s), caused by misuse, abuse or non-compliance with these instructions.



## WIRING INSTRUCTIONS UK Plugs Only

This product is fitted with a BS1363 plug fused at 5A. If the plug is unsuitable, it should be disconnected and an appropriate plug fitted as detailed below. If it is necessary to replace the plug fuse, use only fuses that are approved to BS1362, rated at 5A. If in doubt consult a qualified electrician.

The wires in the mains lead are coloured in accordance with following code:

BLUE - NEUTRAL  
BROWN - LIVE



As these colours may not correspond with the coloured markings sometimes used to identify the terminals in a plug connect as follows:

The wire which is coloured BLUE must be connected to the terminal which is marked „N“ or coloured BLACK. The wire which is coloured BROWN must be connected to the terminal which is marked „L“ or coloured RED. Never connect either of the wires to the big EARTH terminal marked „E“ or coloured GREEN or GREEN AND YELLOW.

**ENGLISH**



## **PROTECT THE ENVIRONMENT**

Do not dispose of the product in household waste at the end of its useful life. Disposal can take place at the Remington® Service Centre or appropriate collection sites.



For further information on recycling see [www.remington-europe.com](http://www.remington-europe.com)



## **SERVICE AND WARRANTY**

This product has been checked and is free of defects. We warrant this product against any defects that are due to faulty material or workmanship for the warranty period from the original date of consumer purchase. If the product should become defective within the warranty period, we will repair any such defect or elect to replace the product or any part of it without charge provided there is proof of purchase. This does not mean an extension of the warranty period.

In the case of a warranty simply call the Remington® Service Center in your region.

The 5 year guarantee is only valid for consumer use.

This warranty is offered over and above your normal statutory rights.

The warranty shall apply in all countries in which our product was sold via an authorised dealer.

This warranty does not include damage to the product by accident or misuse, abuse, alteration to the product or use inconsistent with the technical and/or safety instructions required. This warranty shall not apply if the product has been dismantled or repaired by a person not authorised by us.



## **REMINGTON® SERVICE HOTLINE**

### **United Kingdom**

**+44 0800 212 438 (free call)**

**Spectrum Brands (UK) Limited**

**Fir Street**

**Fairweather**

**Manchester**

**M35 0HS United Kingdom**

[www.remington.co.uk](http://www.remington.co.uk)



## Model No. CI9522

11/UK/CI9522      Version 01/11      Part No.T22-31621  
REMINGTON® Registered Trade Mark of Spectrum Brands, Inc.,  
or one of its subsidiaries

VARTA Consumer Batteries GmbH & Co. KGaA  
Alfred-Krupp-Str.9  
73479 Ellwangen  
Germany

UK & Ireland:  
Spectrum Brands (UK) Ltd.  
Fir Street  
Fallowfield  
Manchester  
M35 0HS  
England

[www.remington-europe.com](http://www.remington-europe.com)  
© 2011 SBI  
Company and is used under license by Spectrum Brands.

This product is not suitable for use in bath and shower

