

REMINGTON®

Curl and Straight Confidence Special Edition



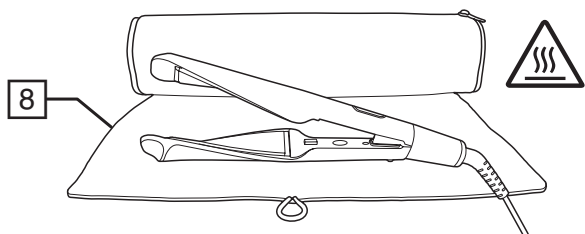
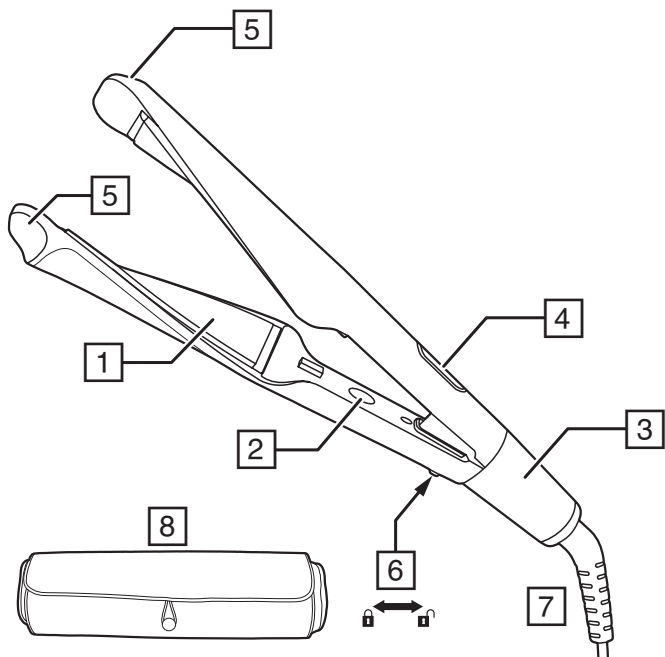
S6606GP



www.remington.co.uk

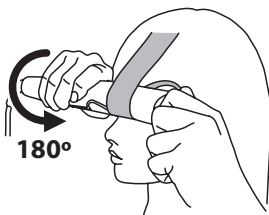
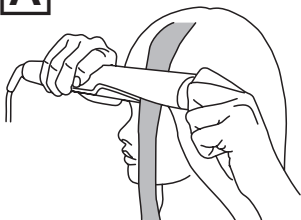
Register online for an EXTRA year guarantee

Visit uk.remington-europe.com/product-registration You must register within 28 days of purchase.

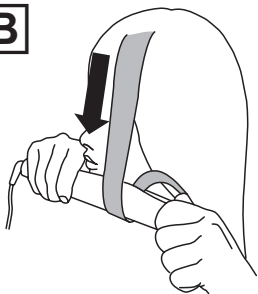


INWARDS

A

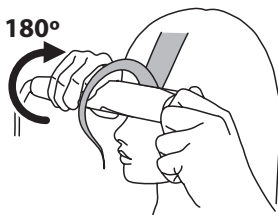
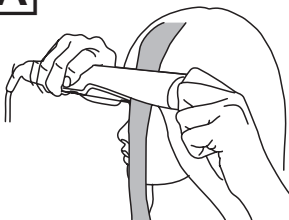


B

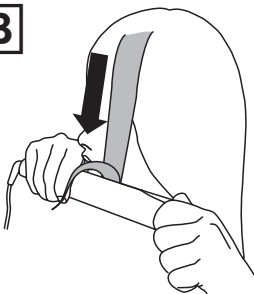


OUTWARDS

A




B



Thank you for buying your new Remington® product. Please read these instructions carefully and keep them safe. Remove all packaging before use.

WARNING: This appliance is hot. Keep out of reach of children at all times.

IMPORTANT SAFEGUARDS

- This appliance can be used by children aged from 8 years and above and persons with reduced physical, sensory or mental capabilities or lack of experience and knowledge if they have been supervised/instructed and understand the hazards involved. Children shall not play with the appliance. Cleaning and user maintenance shall not be done by children unless they are older than 8 and supervised. Keep the appliance and cable out of reach of children under 8 years.
 -  Do not use this appliance near bathtubs, showers, basins or other vessels containing water.
 - When the appliance is used in a bathroom, unplug it after use since the proximity of water presents a hazard even when the appliance is switched off.
 - For additional protection, the installation of a residual current device (RCD) having a rated residual operating current not exceeding 30 mA is advisable in the electrical circuit supplying the bathroom*.
- * Currently, the fitting in a bathroom of an electrical socket suitable or capable of operating the appliance is not permitted in the UK (see BS7671).
- Burn hazard. Keep the appliance out of reach from young children, particularly during use and while cooling down.
 - Never leave the appliance unattended when it is connected to the power supply.
 - Always place the appliance with its stand, if any, on a heat-resistant, stable flat surface.

- If the supply cord of this unit becomes damaged, discontinue use immediately and return the appliance to your nearest authorised Remington® service dealer for repair or replacement in order to avoid a hazard.
- Do not allow any part of the appliance touch the face, neck or scalp.
- Keep the power plug and cord away from heated surfaces.
- Do not use attachments other than those we supply.
- Do not use the appliance if it is damaged or malfunctions.
- Do not twist or kink the cable, or wrap it round the appliance. Check the cord regularly for any sign damage.
- CAUTION: Always remove the appliance from the storage pouch/sleeve before heating and allow it to fully cool before placing it back.
- This appliance is not intended for commercial or salon use.

PARTS



- | | |
|-----------------------------------|---|
| 1. Advanced ceramic coated plates | 5. Cool tips |
| 2. On-off switch | 6. Hinge lock |
| 3. Temperature control | 7. Swivel cord |
| 4. Temperature display | 8. Storage pouch with heat resistant lining |

ADDITIONAL FEATURES

- Fast heat up—ready to use in 30 seconds.
- Automatic safety shut off – this unit will switch itself off if no button is pressed or it is left on after 60 minutes.
- Worldwide voltage: for home or abroad. At 120V times and temperatures may vary.

INSTRUCTIONS FOR USE

- Before use, ensure the hair is clean, dry and tangle-free.
- For extra protection use a heat protection spray.
- Hairsprays contain flammable material - do not use while using this product.
- Section the hair prior to styling. Style the lower layers first.
- Note: The supplied pouch/mat/sleeve will not fully protect the underlying surface from the heat given off by the appliance when it is being used. Therefore, always make sure that the surface you place the mat/pouch/sleeve on will not be damaged by heat.

1. Plug the product into the mains power supply.
2. When your straightener is plugged in but not turned on the lock symbol  will come on. Your straightener is in standby mode.
3. Press and hold the on/off button to switch on.
4. Select the appropriate temperature for your hair type. To increase or decrease the temperature, twist the temperature control left ◀ or right ▶ then release it. As you twist the temperature control the temperature will be shown on the temperature display.
5. **IMPORTANT** If you do not move the temperature control again for 5 seconds, the currently selected temperature will be automatically locked (the lock symbol  will appear in the display). This is to prevent you from accidentally changing the temperature during styling. Once locked, if you want to change the temperature you must twist and hold the temperature control either to the left ◀ OR right ▶ and hold it there for 2 seconds. You can then change the temperature as desired.

Recommended Temperatures

Temperature	Hair type
150°C - 170°C	Thin / fine, damaged or bleached hair
170°C - 210°C	Normal, healthy hair
210°C - 230°C	Thick and difficult to style hair

Caution: the hottest temperatures should only be used by experienced stylists.

6. The temperature display will stop flashing when the appliance is ready to use.

Smooth Straight

1. Take a 5 cm section of hair and place it between the plates near to the roots.
2. Close the plates and steadily glide down the entire length of the hair without stopping.
3. Repeat this around the head.

Bouncy Curls and Soft Waves

1. The type of curl depends on the size of section you select, and the speed you move the appliance along the hair section.

Style	Section Width	Movement Speed
Bouncy Curl	2 cm	Very Slow ↓
Soft Wave	4 cm	Slow ↓

2. Place the selected section of hair between the plates near to the roots.
3. Close the plates and hold them closed by gripping the cool tips with firm pressure.
4. Turn the appliance half a turn (180°) then keep it in this position.
5. Note: You can turn the appliance inwards or outwards depending on the desired result (fig. A).
6. Glide the appliance down the hair without stopping (fig. B) at the speed indicated in the table above. **It is important to maintain consistent, firm gripping pressure on the cool tips while you do this.**
7. Remove the appliance and allow the curl to spring into shape.
8. Repeat this around the head to create as many curls as desired.
9. Let the curls cool before further styling or brushing. This will help to prolong the curls.
10. After use, press and hold the off button to turn off then unplug the appliance.

Temperature Boost Function

- For quick touch ups of stubborn, hard to style sections.
 - The temperature boost function boosts the temperature to 230°C.
1. Twist and hold the temperature control in the right ► position for 2 seconds.
 2. If the temperature control is locked when you try to do this, first, twist and hold the temperature control to the left ◀ or right ► and hold it there for 2 seconds to unlock it, and then continue as above.

Memory Function


- Each time you use the product it will automatically set itself to the last temperature used.

STORAGE, CLEANING AND MAINTENANCE

Let the appliance cool down before cleaning and storing away

- Wipe all the surfaces with a damp cloth.
- Don't use harsh or abrasive cleaning agents or solvents.

The plates can be locked together for easy storage:

To lock, close the plates and slide the hinge lock to the locked  position.

To unlock, slide the hinge lock to the unlocked  position.

NOTE: Do not heat the unit in the locked position.

RECYCLING



To avoid environmental and health problems due to hazardous substances, appliances and rechargeable and non-rechargeable batteries marked with one of these symbols must not be disposed of with unsorted municipal waste. Always dispose of electrical and electronic products and, where applicable, rechargeable and non-rechargeable batteries, at an appropriate official recycling/collection point.

SERVICE AND GUARANTEE



Defects affecting product functionality appearing within the guarantee period will be corrected by replacement or repair at our option provided the product is used and maintained in accordance with the instructions. Your statutory rights are not affected.

To claim an extra 1 year guarantee, register your product online within 28 days of purchase.

This warranty shall not be valid where it is contrary to U.S. and other applicable laws, or where the warranty would be prohibited under any economic sanctions, export control laws, embargos, or other restrictive trade measures enforced by the United States or other applicable jurisdictions. This includes, without limitation, any warranty claims implicating parties from, or otherwise located in, Cuba, Iran, North Korea, Syria and the Crimea region.

Register at: <https://uk.remington-europe.com/product-registration>

Consumables are guaranteed only for their recommended lifecycle. Replacement/spare parts* are excluded and are only covered by a 1 year warranty.

*Examples include, but are not limited to, adaptors, haircare attachments, grooming accessories, etc.

SERVICE CENTRE

United Kingdom

 0800 212 438 (free call mainland UK)


Spectrum Brands (UK) Ltd

Fir Street, Failsworth, Manchester

M35 0HS, UK

www.remington.co.uk

Ireland

 142 951 40

Remington Consumer Products,

Unit B12, Ballymount Corporate Park,

Ballymount, Dublin 12

<https://ie.remington-europe.com>

Ref. No. S6606GP

Type No. S16A

19/UK/ S6606GP T22-7001282 Version 09 / 19

Remington® is a Registered Trade Mark of Spectrum Brands, Inc., or one of its subsidiaries.
Spectrum Brands (UK) Ltd

Fir Street,

Fairsworth,

Manchester

M35 0HS

www.remington.co.uk

© 2019 Spectrum Brands, Inc.