



Model No. EP6020C/EP6030C

I I/UK/EP6020C/EP6030C Version 10/11 Part No. T22-33148

REMINGTON is a Registered Trademark of Spectrum Brands, Inc., or one of its subsidiaries.

VARTA Consumer Batteries GmbH & Co. KGaA

Alfred-Krupp-Str. 9

73479 Ellwangen

Germany

www.remington-europe.com

© 2011 SBI





REMINGTON®

EPILATOR

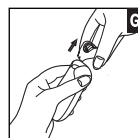
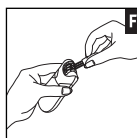
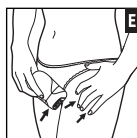
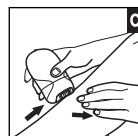
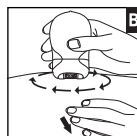
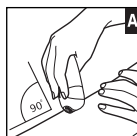
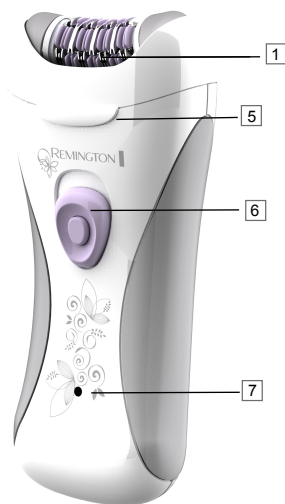
smooth & silky®



EP6020C/EP6030C

REMINGTON®

EPILATOR



ENGLISH

Thank you for choosing Remington®. Our products are designed to meet the highest standard of quality, functionality and design. We hope you enjoy using your new Remington® product.

The Remington® epilator removes hair from the legs, arms, bikini line and underarms. It removes hair from the root all over the body so you'll be soft and smooth for up to 4 weeks.

Please read the instructions for use carefully and keep them in a safe place for future reference. Only use the epilator for use as described in this instruction booklet.



GENERAL INFORMATION ON EPILATION

This Remington® epilator has been designed to make the removal of unwanted hairs as efficient, gentle and easy as possible. Its curved epilation head is especially designed to fit the contours of your body and the hair guides channel fine, short and flat hair into the tweezer discs.

The rotating tweezers catch even the shortest hairs (minimum length 0.5mm) and pull them out by the root. The hairs that grow back are soft and thin. Epilating leaves your skin smooth and hair-free for several weeks.

If you have not used an epilator before, or if you have not epilated for a long period of time, it may take a short while for your skin to adapt to epilation. The discomfort experienced at first is considerably reduced with repeated use as the skin adjusts to the process.

Using an epilator may cause reddening or irritation of the skin. This is a normal reaction that will quickly disappear. However, you should consult your doctor if the irritation has not disappeared within three days.

All methods of hair removal from the root can result in in-growing hair depending on the condition of the skin and hair. Regular exfoliation helps to prevent in-growing hair.

In some cases inflammation of the skin could occur when bacteria penetrate the skin (e.g. when sliding the appliance over the skin). Thorough cleaning of the epilation head before each use will minimise the risk of infection.

Some useful tips

- ▶ When using an epilator for the first time it is best to try it on a small area to get used to the process of epilation.
- ▶ The optimum length for hair removal is between 2-5mm. Epilation is easier and more comfortable.
- ▶ Take a warm bath or shower before epilating and exfoliate to remove dead skin cells. This will make your skin more pliable, making the epilation process less uncomfortable.
- ▶ Epilate in the evening so that any possible reddening can disappear overnight.
- ▶ After use you can use a body cream or aloe lotion to soothe the skin and reduce skin irritation.
- ▶ Regularly exfoliate after epilation to avoid in-growing hair.

ENGLISH



CAUTION

Use this appliance only for its intended use as described in this manual.
Do not use this product if it is not working correctly, if it has been dropped or damaged, or dropped into water.

- ◆ Always store the epilator in a cool, dry place.
- ◆ Do not use the epilator in close proximity to water.
- ◆ The epilator can be attached to a mains voltage of 220V - 240V.



DESCRIPTION

- 1 Tweezers
- 2 Curved epilation head
- 3 Shaving head attachment (EP6020C/EP6030C)
- 4 Detail epilator attachment (EP6030C)
- 5 Head assembly release button
- 6 3-position On/Off button (0 for Off, 1 for Lower Speed, 2 for High Speed)
- 7 Charging indicator light (EP6030C)
- 8 Mains adaptor (Not shown)
- 9 Storage bag (Not shown)
- 10 Exfoliation glove (Not shown - EP6030C)



GETTING READY

Be patient when first using your epilator, as with any new product, it may take a little while to familiarise yourself with the product. Take the time to acquaint yourself with your epilator, as we are confident you will receive years of enjoyable use and complete satisfaction.

ENGLISH

■ INSTRUCTIONS FOR CHARGING

Always ensure that your hands, epilator and mains adaptor are dry before charging this product.

■ RECHARGEABLE MODELS (EP6030C)

Before using your Remington® epilator for the first time, charge for 24 hours. For subsequent uses, charge for 16 hours before use. One full charge allows for up to 40mins usage time.

- ▶ Ensure the epilator is OFF and attach the mains adaptor to the epilator.
- ▶ Connect the mains adaptor to the mains. The charging indicator light will illuminate.
- ▶ Charge for the time indicated above.
- ▶ Use product until the battery is low. This is indicated by the epilator running distinctly slower.

Your epilator cannot be overcharged. However, if the product is not going to be used for an extended period time (2-3 months), unplug it from the mains and store. Fully recharge your epilator when you would like to use it again.

To preserve the life of your batteries, let them run out every six months then recharge for 16 hours.

◆ NOTE: EP6030C can also be used corded. Please follow the instructions below.

■ CORDED MODELS (EP6020C)

- ▶ Ensure the epilator is OFF and attach the mains adaptor to the product and then to the mains.
- ▶ Ensure the epilator is OFF and attach the mains adaptor to the mains.

■ CHARGING CAUTIONS

- ▶ Always charge epilator in a cool, dry place.
- ▶ Do not charge/use the epilator in close proximity to water.
- ▶ The epilator can be attached to a mains voltage of 220 V – 240V (UK, Europe, Australia standard). Please check the voltage of your destination country before travel.



HOW TO USE

Before epilating, make sure that your skin is clean, dry and free from creams or oils.

- ▶ Remove protective cap and turn the epilator on to the desired speed. Low is recommended for fine hair and high is recommended for coarse hair or stronger hair growth.
- ▶ Using your free hand, hold the skin taut to make the hairs stand upright.
- ▶ Position the epilator flat so that the stainless steel discs are at 90° angle and flat against the skin. The Remington® epilation head is curved to ensure maximum contact with the area of hair removal. (Diagram A)

ENGLISH

- ▶ Using small circular motions, slowly and gently glide the epilator over the skin. This circular motion is the most effective method and makes the process less uncomfortable. Alternatively, guide the epilator in a slow, continuous movement against the hair growth. (Diagram B)
- ▶ Repeat within each area until all unwanted hair is removed.
- ▶ After epilating, turn the epilator off.

■ ARM/LEG EPILATION (Diagram C)

Epilate from the lower arm/leg and slowly move upwards. To epilate behind the elbow/knee, keep the arm/leg straight to stretch the skin.

■ UNDERARMS AND BIKINI (Diagram D & E)

Please be aware that these areas are particularly sensitive. However this sensitivity will reduce after repeated usage. For more comfort, ensure that the skin is held taut and that the hair is at the optimum length of 2-5mm. If it has been an extended period of time since you have removed hair, trim the hair with a Remington® bikini trimmer or cosmetic trimmer before epilation.

When epilating underarm, raise your arm so that the skin is stretched. Guide the epilator in circular movements. Avoid using substances which may cause irritation, such as deodorants, directly after epilation (preferably overnight).

⚠ CAUTION:

- ▶ For your protection your epilator may slow down or even stop if pressed too firmly against the skin.
- ▶ Do not use the epilating head on irritated skin or skin with varicose veins, rashes, spots, moles or wounds without consulting a doctor. People with reduced immune response e.g. during pregnancy, or people who suffer from diabetes mellitus, haemophilia or immunodeficiency should also consult their doctor before using this product.
- ▶ For hygiene reasons do not let another person use your epilator. It is recommended for use by one person only.

■ YOUR SHAVING HEAD (EP6020C/EP6030C)

The shaver head provides a close shave for sensitive areas.

- ▶ Press the head release button and remove the epilator head.
- ▶ Attach the shaver head with the protective cover on until it clicks into place.
- ▶ Hold the shaver head at a right angle to the skin and move against the direction of the hair growth.

■ YOUR DETAIL EPILATOR HEAD (EP6030C)

The detail epilator head is designed for smaller areas and spot treatments.

- ▶ Press the head release button and remove the epilator head.
- ▶ Attach the detail epilator head until it clicks into place.
- ▶ Position the epilator flat so that the stainless steel discs are at 90° angle and flat against the skin.

■ YOUR EXFOLIATION GLOVE (EP6030C)

What does the exfoliation glove do?

It gently and effectively removes dead cells from the skin's surface.

Why exfoliate?

Exfoliation prevents ingrown hairs. Ingrown hairs occur when the growing hair curls up under the skin instead of growing out like it should. It results in an often painful red bump and possible infections. Rubbing your skin with an exfoliation glove in the shower or bath will help reduce ingrown hairs or infections.

ENGLISH



CARE FOR YOUR EPILATOR

To ensure long lasting performance of your epilator, clean the head assembly regularly.

AFTER EACH USE

CLEANING THE EPILATION HEAD

- ▶ Ensure the epilator is turned off and disconnected from the mains.
- ▶ Press the head release button and open the head assembly. (Diagram G)
- ▶ Turn the head assembly upside down.
- ▶ Using your thumbs, push the small sides together and push the epilation head upwards. This releases the curved epilation head.
- ▶ Brush the accumulated hair from the tweezers by turning the barrel manually. Alternatively, remove the epilation head from the epilator and rinse under running water. Allow to dry completely before attaching to the epilator body. (Diagram F)
- ◆ NOTE: The body of the epilator is not washable. Do not submerge in water.
- ▶ Replace the curved epilation head, ensuring that the wire is at the higher side of the epilator.
- ▶ Replace the epilation head assembly into the unit by gently pressing until it clicks into place.

CLEANING THE SHAVING HEAD

- ▶ Ensure the epilator is turned off and disconnected from the mains.
- ▶ Press the head release button and remove the shaving head.
- ▶ Remove the blade and trimmer assembly by placing your fingers either side of the assembly and pulling upwards.
- ▶ Gently shake the blade and trimmer assembly to remove the hair. Brush the trimmers and shaver housing.
- ▶ Replace the blade and trimmer assembly.
- ◆ NOTE: Never use the cleaning brush on the foil as damage may occur.

TO REMOVE RESIDUE

To remove residue from the stainless steel tweezers, dampen a swab with alcohol. Gently run the swab over the tweezers until the residue has been removed.

- ◆ CAUTION: Make sure that the cotton swab is not soaked in alcohol as this may damage the epilator.



Not suitable for cleaning under water.

ENGLISH



IMPORTANT SAFETY INSTRUCTIONS

WARNING – TO REDUCE THE RISK OF BURNS, ELECTROCUTION, FIRE, OR INJURY TO PERSONS:

- ▶ To prevent accidents, keep the product away from hair on your scalp, your eyebrows, eyelashes as well as clothes, brushes, wires etc...
- ▶ An appliance should never be left unattended when plugged into a power outlet.
- ▶ Always unplug your unit when it is not in use, unless it is being recharged.
- ▶ Keep the power plug and cord away from heated surfaces.
- ▶ This product is not water resistant. Do not use in the bathtub or shower.
- ▶ Make sure the power plug and cord does not get wet. Do not reach for your unit if it has fallen into water – immediately unplug it from the electrical outlet.
- ▶ Do not plug or unplug the product with wet hands.
- ▶ Do not store your unit where it can fall into a tub or sink of water.
- ▶ Do not wrap the cord of your adaptor around the unit.
- ▶ Do not use the product with a damaged cord. A replacement can be obtained via our Remington® Service Centres.
- ▶ Store the product at a temperature between 15°C and 35°C.
- ▶ Only use the parts supplied with the appliance.
- ▶ Keep this product out of reach of children. The use of this appliance by persons with reduced physical, sensory or mental capabilities or lack of experience and knowledge can give cause to hazards. Persons responsible for their safety should give explicit instructions or supervise the use of the appliance.



PROTECT THE ENVIRONMENT



- ▶ Do not dispose the epilator in household waste at the end of its useful life. Disposal can take place at Remington® Service Centre or appropriate collection sites.



For further information on recycling see www.remington-europe.com



BATTERY REMOVAL (EP6030C only)

When your rechargeable epilator reaches the end of its useful life, the batteries must be removed from the epilator and be recycled or disposed of properly in accordance with your state and local requirements. If this is not required by law, you may elect to dispose of the epilator without the batteries.

⚠ CAUTION:

Do not put in fire or mutilate your batteries when disposing as they may burst and release toxic materials. Do not short circuit as it may cause burns. Dispose of properly in accordance with your local and state requirements.

To Remove the Rechargeable Battery:

- 1 The appliance must be disconnected from the supply mains when removing the battery.
- 2 Ensure that the epilator is discharged of all power.
- 3 Using a flat screwdriver and pry off the two side panel.
- 4 Using a flat screwdriver and pry off the epilator halves apart, exposing the batteries.
- 5 Cut the wires on both ends of the battery and remove it from the epilator.
- 6 The battery is to be disposed of safely.

2
years

SERVICE AND WARRANTY

This product has been checked and is free of defects. We warrant this product against any defects that are due to faulty material or workmanship for a 2 year period from the original date of consumer purchase. If the product should become defective within the warranty period, we will repair any such defect or elect to replace the product or any part of it without charge provided there is proof of purchase. This does not mean an extension of the warranty period.

In the case of a warranty simply call the Remington® Service Center in your region.

This warranty is offered over and above your normal statutory rights.

The warranty shall apply in all countries in which our product was sold via an authorised dealer.

This warranty does not include cutters which are consumable parts. Also not covered is damage to the product by accident or misuse, abuse, alteration to the product or use inconsistent with the technical and/or safety instructions required. This warranty shall not apply if the product has been dismantled or repaired by a person not authorised by us.



REMINGTON® SERVICE HOTLINES

United Kingdom

 **+44 0800 212 438 (free call)**

Spectrum Brands (UK) Limited,
Fir Street, Failsworth,
Manchester,
M35 0HS, UNITED KINGDOM

www.remington.co.uk

