



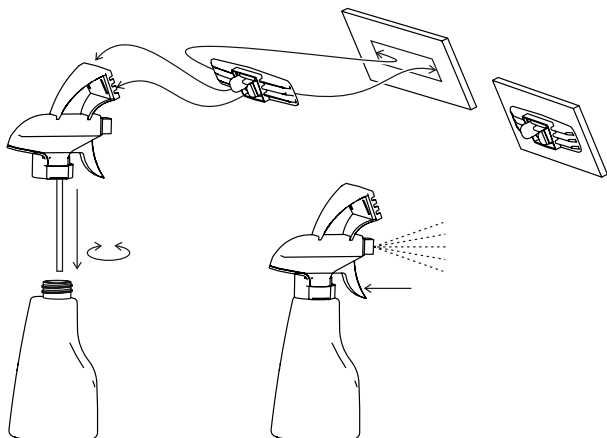
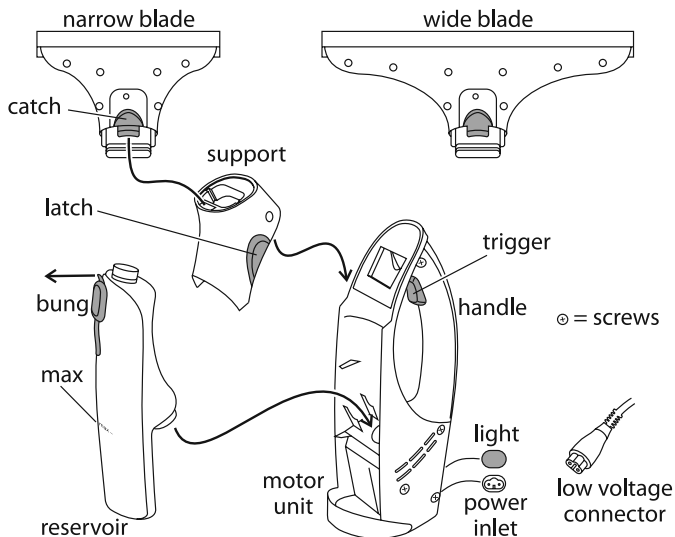
Russell Hobbs




instructions

£10,000 prize draw
EXTRA year guarantee
FREE rewards gallery


www.productregister.co.uk/rhobbs
Register online now!
See back for details



 Read the instructions, keep them safe, pass them on if you pass the appliance on. Remove all packaging before use.

 **IMPORTANT SAFEGUARDS**

Follow basic safety precautions, including:

- 1 This appliance can be used by children aged 8 years and above and persons with reduced physical, sensory or mental capabilities or lack of experience and knowledge if they have been supervised/instructed and understand the hazards involved.
 - Children shall not play with the appliance.
 - Cleaning and user maintenance shall not be done by children unless they are older than 8 and supervised.
 - Use and store the appliance out of reach of children under 8 years.
- 2 Don't operate the appliance if it's damaged or malfunctions.
- 3 The charger/flex/low voltage connector assembly can't be repaired. If damaged, this must be replaced by an assembly we supply.
- 4 The appliance must only be used with the charger supplied, and vice versa.
-  Don't immerse the appliance in liquid.
 - 5 Don't use accessories or attachments unless we provide them.

- 6 Don't use the appliance for any purpose other than those described in these instructions.
- 7 Don't leave the appliance in sunlight, UV can damage plastics.

household use only



BEFORE USING FOR THE FIRST TIME

- Charge the appliance fully (2 hours) before you switch it on.



CHARGING

- 1 The motor unit contains a Lithium Ion (Li Ion) battery, don't short-circuit, burn, mutilate, or immerse it.
 - 2 Switch the appliance off.
 - 3 Push the low voltage connector from the charger into the power inlet in the rear of the appliance.
 - 4 Put the charger into a mains socket (switch the socket on, if it's switchable).
 - 5 The light blinks while the battery is charging.
 - 6 When fully charged, the light glows steadily.
 - 7 Unplug the charger from the mains socket.
 - 8 Remove the low voltage connector from the power inlet.
 - 9 Don't use the charger or low voltage connector outdoors.
- ★ The appliance will not operate while charging.



SURFACES

- 10 The appliance can be used on smooth vertical surfaces like glass windows/doors/mirrors, tiled walls in kitchens/bathrooms, and polished stone.
- 11 Don't use it on horizontal surfaces.
- 12 Don't use it as a wet vac – it's not designed to pick up spilled liquids.



DETERGENTS

- 13 Use only proprietary liquid detergents marketed for use with window vacs.
- 14 Don't use vinegar, ammonia, bleach, spirit, or foam cleaners.



FIT THE BLADE

- 15 Use the wide blade for large areas, use the narrow blade for smaller areas, or where access is restricted.

- 16 Press the catch, push the blade into the support, then release the catch.

IN USE

- 17 Apply the detergent to the surface to be cleaned.
- 18 Wipe or rub the detergent over the surface as you normally would.
- 19 Press the trigger to run the motor, press again to stop.
- 20 Use the blade as a squeegee, in slow arcs, like the action of a car windscreen wiper.
- 21 The water/liquid from the surface being cleaned, will be sucked into the reservoir.
- 22 When the contents of the reservoir reach the max mark:
- a) stop the motor
 - b) pull the bung away from the reservoir, to expose the drain hole
 - c) empty the reservoir via the exposed drain hole
 - d) replace the bung
 - e) carry on cleaning
- 23 When you've finished, buff the surface with a lint-free cloth.
- ★ If the light starts to blink, it means the battery is getting low – finish the surface you're working on, and recharge the battery.

AFTER USE

- 24 Switch the appliance off.
- 25 Press the catch, and pull the blade off the support
- 26 Squeeze the latches on either side of the support, and lift it off the motor unit.
- 27 Lift the reservoir off the motor unit.

CARE AND MAINTENANCE

- 28 Empty the reservoir and rinse with clean water.
- 29 Rinse the blade(s) under a running tap.
- 30 Wipe the surfaces of the support and motor unit with a clean damp cloth.
- 31 Let the reservoir and blade(s) air dry before reassembling the appliance.

REASSEMBLY

32 Fit the reservoir into the motor unit.

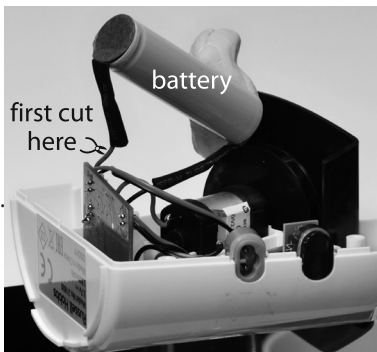
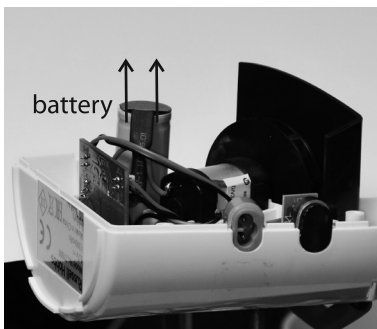
33 Fit the support to the combined motor unit/reservoir.

AFTER USING FOR THE LAST TIME

Sadly, nothing lasts forever, and the day will come when your appliance comes to the end of its natural life. The motor unit contains a Lithium Ion (Li Ion) battery, so you must open it up, remove the battery, and dispose of it at an authorised recycling plant. Your local authority should have a centre which accepts such waste for recycling.

To remove the battery:

- 1 Disassemble the appliance.
- 2 Unscrew the 4 screws holding the motor unit together, and split the casing.
- 3 Pull the battery out of its mount.
- 4 Clip the red wire from the top of the battery as close to the battery as you can.
- 5 Clip the black wire from the bottom of the battery as close to the battery as you can.
- 6 Cover the exposed end of each wire with sticky tape, so that they can't touch each other, or anything else.





ENVIRONMENTAL PROTECTION

To avoid environmental and health problems due to hazardous substances in electrical and electronic goods, appliances marked with this symbol mustn't be disposed of with unsorted municipal waste, but recovered, reused, or recycled.



CUSTOMER SERVICE

If you ring, have the Model No. to hand, as we won't be able to help without it. It's on the rating plate (usually underneath the product). The product isn't user-serviceable. If it isn't working, read the instructions, check the plug fuse and main fuse/circuit breaker. If it's still not working, consult your retailer.

If that doesn't solve the problem, ring Customer Service for advice. If they tell you to return the product to us, pack it carefully, include a note with your name, address, day phone number, and what's wrong. If under guarantee, say where and when purchased, and include proof of purchase (till receipt). Send it to:

Customer Service, Spectrum Brands (UK) Ltd, Fir Street, Failsworth, Manchester M35 0HS

email: support@russellhobbs.com

telephone: 0845 658 9700 (local rate number)

➡ GUARANTEE

Defects affecting product functionality appearing within two years of first retail purchase will be corrected by replacement or repair provided the product is used and maintained in accordance with the instructions. Your statutory rights are not affected. Documentation, packaging, and product specifications may change without notice.



ONLINE

www.russellhobbs.co.uk for more products



REGISTER ONLINE FOR –



£10,000 prize draw,

EXTRA year guarantee,

FREE rewards gallery

Visit www.productregister.co.uk/rhobbs

You must register within 28 days of purchase.