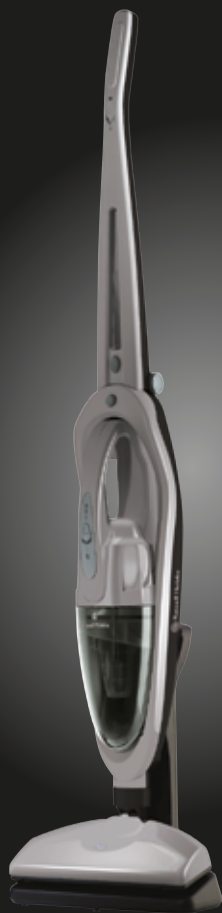




Russell Hobbs



Cyclonic Stick Vacuum

RHSV2P

INSTRUCTIONS & WARRANTY

RHSV2P_IB_091013



Spectrum Brands Australia Pty Ltd

Locked Bag 3004 Braeside

Victoria 3195 Australia

Customer Service in Australia

TollFree: 1800 623 118

Email: info@spectrumbrands.com.au

Website: www.spectrumbrands.com.au

Spectrum Brands New Zealand Ltd

PO Box 9817 Newmarket

Auckland 1149 New Zealand

Customer Service in New Zealand

TollFree: 0800 736 776

Email: service@spectrumbrands.co.nz

Website: www.spectrumbrands.co.nz

Spectrum Brands Australia Pty Ltd and Spectrum Brands New Zealand Ltd Warranty Against Defects



In this warranty:

Australian Consumer Law means the Australian consumer law set out in Schedule 2 to the Competition and Consumer Act 2010;

CGA means the New Zealand Consumer Guarantees Act 1993;

Goods means the product or equipment which was accompanied by this warranty and purchased in Australia or New Zealand, as the case may be;

Manufacturer, We or us means:

1. for Goods purchased in Australia, Spectrum Brands Australia Pty Ltd ABN, 78 007 070 573;
or
2. for Goods purchased in New Zealand, Spectrum Brands New Zealand Ltd, as the case may be, contact details as set out at the end of this warranty;

Supplier means the authorised distributor or retailer of the Goods that sold you the Goods in Australia or in New Zealand; and

You means you, the original end-user purchaser of the Goods.

1. Our goods come with guarantees that cannot be excluded under the Australian Consumer Law, or the CGA. You are entitled to a replacement or refund for a major failure and compensation for any other reasonably foreseeable loss or damage. You are also entitled to have the goods repaired or replaced if the goods fail to be of acceptable quality and the failure does not amount to a major failure.
2. The benefits provided by this Warranty are in addition to all other rights and remedies in respect of the Goods which the consumer has under either the Australian Consumer Law or the CGA. The original purchaser of the Goods is provided with the following Warranty subject to the Warranty Conditions:
3. We warrant the Goods for all parts defective in workmanship or materials from the date of purchase (**Warranty Period**), for the period of:-
 - (a) Two (2) years for Russell Hobbs products (see product packaging for details)
 - (b) Two (2) years with five (5) year motor warranty for Russell Hobbs products (see product packaging for details)
 - (c) Limited Lifetime, Ten (10) years for Russell Hobbs cookware.
 - (d) One (1) year for George Foreman, iRobot, Westinghouse, Black & Decker and Spectrum Brands products.

If the Goods prove defective within the Warranty Period by reason of improper workmanship or material, we may, at our own discretion, repair or replace the Goods without charge.



Warranty Conditions

4. The Goods must be used in accordance with the manufacturer's instructions. This Warranty does not apply should the defect in or failure of the Goods be attributable to misuse, abuse, accident or non-observance of manufacturer's instructions on the part of the user. As far as the law permits, the manufacturer does not accept liability for any direct or consequential loss, damage or other expense caused by or arising out of any failure to use the Goods in accordance with the manufacturer's instructions.
5. Exhaustible components (such as batteries, filters and brushes) of the Goods are included under this Warranty only where there is a defect in workmanship or materials used.
6. The warranty granted under clause 3 is limited to repair or replacement only.
7. Any parts of the Goods replaced during repairs or any product replaced remain the property of the manufacturer. In the event of the Goods being replaced during the Warranty Period, the warranty on the replacement Goods will expire on the same date as for the Warranty Period on the original Goods which are replaced.
8. In order to claim under the warranty granted under clause 3 you must:
 - (a) Retain this warranty with your receipt/proof of purchase; and
 - (b) Return the Goods to us at the relevant address or to the Supplier by prepaid freight within the Warranty Period accompanied with (i) the legible and unmodified original proof of purchase, which clearly indicates the name and address of the Supplier, the date and place of purchase, the product name or other product serial number and (ii) this warranty.
9. This warranty is immediately void if:
 - (a) Any serial number or appliance plate is removed or defaced;
 - (b) The Goods have been serviced or otherwise repaired by a person not authorised to do so by us or where non approved replaced parts are used.
10. The Goods are designed for domestic use only. A limited 90-day Warranty applies to any industrial or commercial use of the Goods. The Goods must be connected to the electrical voltage requirements as specified in the ratings label located on the Goods.
11. This warranty does not cover the cost of claiming under the warranty or transport of the Goods to and from the Supplier or us.
12. This warranty is only valid and enforceable in Australia against Spectrum Brands Australia Pty Ltd and in New Zealand against Spectrum Brands New Zealand Ltd.

Contact us or the Supplier for further details.

Register your product online

If you live in Australia please visit: www.spectrumbrands.com.au/warranty

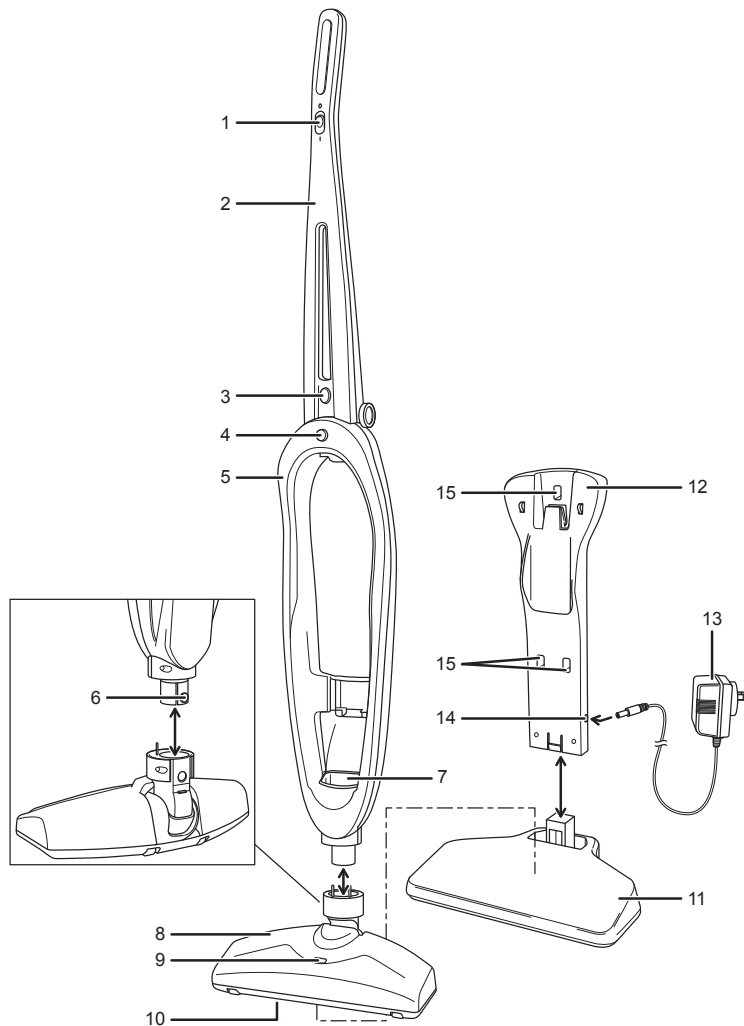
If you live in New Zealand Please visit: www.spectrumbrands.co.nz/warranty

Registration of your warranty is not compulsory, it gives us a record of your purchase AND entitles you to receive these benefits: Product information; Hints and tips; Recipes and news; Information on special price offers and promotions.

Any questions? Please contact Customer Service for advice.

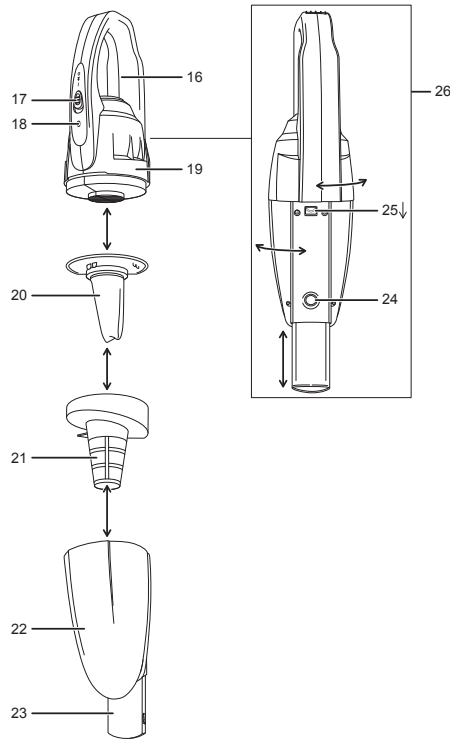


Congratulations on the purchase of your Russell Hobbs Cyclonic Stick Vacuum Cleaner. Each unit is manufactured to ensure safety and reliability. Before using this appliance for the first time, please read this instruction booklet carefully and keep it for future reference. Pass it on if you pass on the appliance. When using electrical appliances, basic safety precautions should always be followed.



1. Upright vacuum power on/off switch.
2. Upper handle.
3. Foldable handle release button.
4. Handheld vacuum release button.
5. Upright frame.
6. Motorised floor tool release button.

7. Lower opening.
8. Motorised floor tool.
9. Motorised floor tool power light.
10. Motorised rotating brush.
11. Charging station foot.
12. Charging station leg.



- | | |
|---|--------------------------------------|
| 13. AC adaptor/charger. | 20. Dust filter. |
| 14. Power input socket. | 21. Mesh filter. |
| 15. Wall mounting screw holes. | 22. Dust bin. |
| 16. Handle. | 23. Crevice tool. |
| 17. Handheld vacuum power on/off switch. | 24. Crevice tool locking tab. |
| 18. Charging light. | 25. Dust bin release button. |
| 19. Motor unit. | 26. Handheld vacuum. |

GETTING STARTED

Ensure you remove all parts from the packaging.

- Handheld Vacuum:
 - Dust filter
 - Mesh filter
 - Integrated crevice tool
- Upright frame
- Motorised floor tool
- Charging station leg
- Charging station foot
- AC adaptor/charger
- Instructions & Warranty book



CHARGING STATION

The charging station can be wall or floor mounted. For floor mounting, the leg and the foot must be assembled together. For wall mounting, only the leg is required.

Note: The charging station must be located within approximately 1.8 metres of a wall power outlet.

FLOOR MOUNTING

- Assemble the charging station by pushing the leg down into the foot until it locks into place.

WALL MOUNTING

- Use the leg without the foot attached. Position the charging station leg in the desired location, leaving a minimum distance of 80mm between the bottom of the leg and the surface below to allow room for the motorised floor tool to rest correctly. Mark the hole positions on the wall using the charging station leg as a template.
- Fit screws (not supplied) to the marked locations leaving the screw heads protruding 2 - 3mm from the wall.
- Fit the charging station leg onto the screws in the wall.

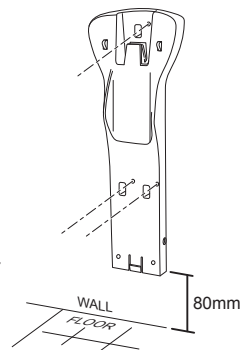
CONNECTING THE AC ADAPTOR/CHARGER

- Connect the small plug into the power input socket on the side of the charging station leg. Plug the AC adaptor/charger into the wall power outlet.

Switch on the wall power outlet.

FITTING THE MOTORISED FLOOR TOOL TO THE UPRIGHT FRAME

- Position the bottom end of the upright frame into the hole in the top of the motorised floor tool, being sure to correctly align the power pins on the floor tool with the holes on the frame. Press down until the floor tool locks into place.
- If it is necessary to remove the floor tool at any time, press the release button inwards and slide the upright frame out of the floor tool.



FITTING THE HANDHELD VACUUM INTO THE UPRIGHT FRAME

- Ensure the crevice tool on the handheld vacuum is in the retracted position.
- Hold the handle of the handheld vacuum and position the crevice tool down into the lower opening of the upright frame.
- Press the top of the handheld vacuum back into the upright frame and ensure it locks into place.

CHARGING

- Place the stick vacuum assembly on the charging station (*NOTE: Always make sure that the vacuum is turned off*). The charging light will flash to indicate the vacuum has made contact with the charging station and is charging.
- Allow 14 - 16 hours to fully charge the batteries before first use.
- When the vacuum battery is totally depleted, approximately 10 - 12 hours of charging is required for the battery to fully recharge. The charging light will flash whilst charging and glow steadily once charged.
- In order to ensure that it is always ready for use, the vacuum should be left on the charger when not being used. The adaptor may become warm during charging - this is normal.



VACUUMING WITH THE UPRIGHT STICK VACUUM

- Slide the upright stick vacuum power on/off switch away from you to switch the vacuum on. The floor tool power light will illuminate.
- Move the floor tool over the surface cleaning a small area at a time.
- When you move to a new area, overlap the previous area to make sure none of the surface is missed.
- When you have finished vacuuming, slide the power on/off switch towards you to switch the vacuum off.

VACUUMING WITH THE HANDHELD VACUUM

The handheld vacuum is perfect for cleaning small spills, furniture, car seats etc.

- To remove the handheld vacuum, press the handheld vacuum release button and pull forward and upwards away from the upright frame.
- The crevice tool will automatically slide part-way out as you remove the handheld vacuum.
- If you wish to use the handheld vacuum with the crevice tool fully extended, pull the tool out until the locking tab snaps into place. Otherwise, simply push it back into the unit.

Note: Be sure to press the crevice tool locking tab and push the tool in before placing the handheld vacuum back into the upright frame.

FINISHED CLEANING?

- Slide the power on/off switch towards you to switch the vacuum off.
- Return the stick vacuum assembly to the charging station ready for the next clean.

CLEANING THE VACUUM

- Switch the vacuum off.
- Do not put any part of the vacuum in a dishwasher.
- Do not use harsh or abrasive cleaning agents or solvents.
- Wipe external surfaces with a damp cloth. A dab of dishwashing liquid can help remove stubborn stains.
- Wipe off any traces of soap and dry before using.

REMOVING AND EMPTYING THE DUST BIN

- The vacuum will work until the dust bin is full but you may find a loss of performance as the dust bin nears capacity.
- Switch the vacuum off and allow time for the dust to settle.
- To remove the dust bin, hold the handheld vacuum by the dust bin with the crevice tool facing the floor.
- Press the dust bin release button and turn the dust bin clockwise to separate it from the motor unit.
- Lift the filters out of the dust bin and clean. (refer to 'Cleaning the filters' section)
- Empty the contents of the vacuum cleaner dust bin into a rubbish bin.

CLEANING THE FILTERS

While emptying the dust bin, check the filters - blocked filters quickly reduce suction. Make sure the space you are using is protected with an old towel or some newspaper as this process can be messy.



DUST FILTER

- If the dust filter is covered in dust, tap it gently over some newspaper or on the rim of a rubbish bin to dislodge the dust.
- If it is very dirty, soak the filter in warm soapy water for a few minutes, rinse thoroughly under a running tap to remove all traces of soap, then let it air dry – do NOT refit until the filter is completely dry.

MESH FILTER

- Clean any rubbish from the mesh filter.
- If it is very dirty, soak the filter in warm soapy water for a few minutes, rinse thoroughly under a running tap to remove all traces of soap, then let it air dry – do NOT refit until the filter is completely dry.

REASSEMBLY

- Ensure all the components are completely dry before reassembly.
- Lower the mesh filter into the bin.
- Place the dust filter into the mesh filter.
- Grip the dust bin with one hand, grip the motor unit with the other, and match up the lugs on the body with the slots in the dust bin.
- Turn the dust bin anti-clockwise until it clicks into place.
- Check that it is secure.

CLEANING THE MOTORISED ROTATING BRUSH

- Switch the vacuum off. Remove the handheld vacuum from the upright frame.
- Pull out any debris surrounding the motorised brush.
- Carefully use a pair of scissors to remove items such as threads/hair that may have become entangled around the brush.
- Refit the handheld vacuum to the upright frame and return to the charging station.

BLOCKAGES

- If the vacuum starts to lose suction there may be a blockage, or the battery is depleting.
- Switch the vacuum off.
- Spread some newspaper or an old towel on the floor to avoid making a mess.
- Empty the dust bin.
- Check and clean both filters. (refer to 'Cleaning the filter S' section)
- Check the motorised rotating brush for entangled thread or other debris. (refer to 'cleaning the motorised rotating brush' section)
- Check the crevice tool for blockages. Remove blockage using a blunt object such as a pencil to clear the crevice tool passageway.
- Check the lower opening of the upright frame for blockages. It may be necessary to remove the motorised floor tool to clear the debris from this area.
- Check the performance of the vacuum, and recharge if necessary.
- If you haven't cleared the blockage following these steps, call customer service.



IMPORTANT SAFEGUARDS

When using electrical appliances, basic safety precautions should always be followed, including:

1. The vacuum cleaner must only be used by or under the supervision of a responsible adult. Use and store it out of reach of children.
2. This appliance is NOT a toy. Children should be supervised to ensure they do not play with this appliance.
3. This appliance is not intended for use by persons (including children) with reduced physical, sensory or mental capabilities, or lack of experience and knowledge, unless they have been given supervision or instruction concerning use of the appliance by a person responsible for their safety.
4. Do not immerse the vacuum cleaner, charging station or AC adaptor/charger in any liquid and do not use it in wet or damp areas.
5. Do not use the vacuum cleaner near a gas, oil (including paraffin) or open fire. The flame may be drawn towards the vacuum cleaner causing a fire hazard.
6. To avoid personal injury, keep hair, clothing, fingers, face, etc. away from the brush/ suction inlet of the vacuum cleaner.
7. Do not use the vacuum cleaner to pick up any of the following:
 - do not attempt to pick up liquid – this vacuum cleaner is designed for dry substances only.
 - do not pick up items that may ignite spontaneously – e.g. matches, pieces of firelighter.
 - do not pick up anything burning or smouldering – e.g. cigarette ends, ashes or embers.
 - do not pick up spillage from toner cartridges – the fine carbon particles may pass through the filter and damage the motor.
 - do not pick up cement or plaster dust – these can combine with moisture in the air, clog the filter, scour the bin and possibly cause the motor to overheat and burn out.
 - do not pick up sharp objects – they may damage the filter and motor.
 - do not pick up biological waste – you will eventually have to clean it off the filter and there is a possibility of viral particles passing through the filter and entering your air supply.
8. Be sure the cable of the charger does not become a tripping hazard to yourself or others.
9. Do not use the vacuum cleaner to vacuum people, pets or animals of any sort.
10. Do not use the vacuum cleaner for any purpose other than its intended purpose.
11. Use only the accessories supplied with the unit.
12. Do not leave the vacuum cleaner sitting in sunlight; prolonged exposure to UV rays may damage the plastic.
13. Do not use the vacuum cleaner if it is damaged or has malfunctioned in any way. Contact the customer service department.
14. There are no user serviceable parts other than the filter. If repairs are required they must be carried out by the manufacturer or a suitably qualified person in order to avoid a hazard.
15. Use only the AC power adaptor/charger supplied with the vacuum cleaner. Use of an incorrect power adaptor could create a fire hazard and/or damage the vacuum cleaner.
16. For added safety, electrical appliances should be connected to a power outlet that is protected by a residual current device (RCD), also often referred to as a 'Safety Switch'. Your switchboard may already incorporate an RCD. If unsure, call an electrician for verification and fitting if necessary.

SAVE THESE INSTRUCTIONS. THIS APPLIANCE IS FOR HOUSEHOLD USE ONLY

This image shows a single sheet of white paper with horizontal ruling lines. The lines are evenly spaced and run across the width of the page. There are no margins, text, or other markings on the paper.



A series of 20 horizontal lines for writing, spaced evenly across the page.





Russell Hobbs

www.russellhobbs.com.au

www.russellhobbs.co.nz