



Russell Hobbs



Electric Salt or Pepper Grinder

RHPK1000 / RHPK1000BLK / RHPK1000RED

INSTRUCTIONS & WARRANTY

RHPK1000_IB_100112

Spectrum Brands Australia Pty Ltd

Locked Bag 3004 Braeside
Victoria 3195 Australia

Customer Service in Australia

TollFree: 1800 623 118

Email: info@spectrumbrands.com.au

Website: www.spectrumbrands.com.au

Spectrum Brands New Zealand Ltd

PO Box 9817 Newmarket
Auckland 1149 New Zealand

Customer Service in New Zealand

TollFree: 0800 736 776

Email: service@spectrumbrands.co.nz

Website: www.spectrumbrands.co.nz

Spectrum Brands Australia Pty Ltd and Spectrum Brands New Zealand Ltd Warranty Against Defects



In this warranty:

Australian Consumer Law means the Australian consumer law set out in Schedule 2 to the Competition and Consumer Act 2010;

CGA means the New Zealand Consumer Guarantees Act 1993;

Goods means the product or equipment which was accompanied by this warranty and purchased in Australia or New Zealand, as the case may be;

Manufacturer, We or us means:

1. for Goods purchased in Australia, Spectrum Brands Australia Pty Ltd ABN, 78 007 070 573;
or
2. for Goods purchased in New Zealand, Spectrum Brands New Zealand Ltd, as the case may be, contact details as set out at the end of this warranty;

Supplier means the authorised distributor or retailer of the Goods that sold you the Goods in Australia or in New Zealand; and

You means you, the original end-user purchaser of the Goods.

1. Our goods come with guarantees that cannot be excluded under the Australian Consumer Law, or the CGA. You are entitled to a replacement or refund for a major failure and compensation for any other reasonably foreseeable loss or damage. You are also entitled to have the goods repaired or replaced if the goods fail to be of acceptable quality and the failure does not amount to a major failure.
2. The benefits provided by this Warranty are in addition to all other rights and remedies in respect of the Goods which the consumer has under either the Australian Consumer Law or the CGA. The original purchaser of the Goods is provided with the following Warranty subject to the Warranty Conditions:
3. We warrant the Goods for all parts defective in workmanship or materials from the date of purchase (**Warranty Period**), for the period of:-
 - (a) Two (2) years for Russell Hobbs products (see product packaging for details)
 - (b) Two (2) years with five (5) year motor warranty for Russell Hobbs products (see product packaging for details)
 - (c) Limited Lifetime, Ten (10) years for Russell Hobbs cookware.
 - (d) One (1) year for George Foreman, iRobot, Westinghouse, Black & Decker and Spectrum Brands products.

If the Goods prove defective within the Warranty Period by reason of improper workmanship or material, we may, at our own discretion, repair or replace the Goods without charge.

Warranty Conditions

4. The Goods must be used in accordance with the manufacturer's instructions. This Warranty does not apply should the defect in or failure of the Goods be attributable to misuse, abuse, accident or non-observance of manufacturer's instructions on the part of the user. As far as the law permits, the manufacturer does not accept liability for any direct or consequential loss, damage or other expense caused by or arising out of any failure to use the Goods in accordance with the manufacturer's instructions.
5. Exhaustible components (such as batteries, filters and brushes) of the Goods are included under this Warranty only where there is a defect in workmanship or materials used.
6. The warranty granted under clause 3 is limited to repair or replacement only.
7. Any parts of the Goods replaced during repairs or any product replaced remain the property of the manufacturer. In the event of the Goods being replaced during the Warranty Period, the warranty on the replacement Goods will expire on the same date as for the Warranty Period on the original Goods which are replaced.
8. In order to claim under the warranty granted under clause 3 you must:
 - (a) Retain this warranty with your receipt/proof of purchase; and
 - (b) Return the Goods to us at the relevant address or to the Supplier by prepaid freight within the Warranty Period accompanied with (i) the legible and unmodified original proof of purchase, which clearly indicates the name and address of the Supplier, the date and place of purchase, the product name or other product serial number and (ii) this warranty.
9. This warranty is immediately void if:
 - (a) Any serial number or appliance plate is removed or defaced;
 - (b) The Goods have been serviced or otherwise repaired by a person not authorised to do so by us or where non approved replaced parts are used.
10. The Goods are designed for domestic use only. A limited 90-day Warranty applies to any industrial or commercial use of the Goods. The Goods must be connected to the electrical voltage requirements as specified in the ratings label located on the Goods.
11. This warranty does not cover the cost of claiming under the warranty or transport of the Goods to and from the Supplier or us.
12. This warranty is only valid and enforceable in Australia against Spectrum Brands Australia Pty Ltd and in New Zealand against Spectrum Brands New Zealand Ltd.

Contact us or the Supplier for further details.

Register your product online

If you live in Australia please visit: www.spectrumbrands.com.au/warranty

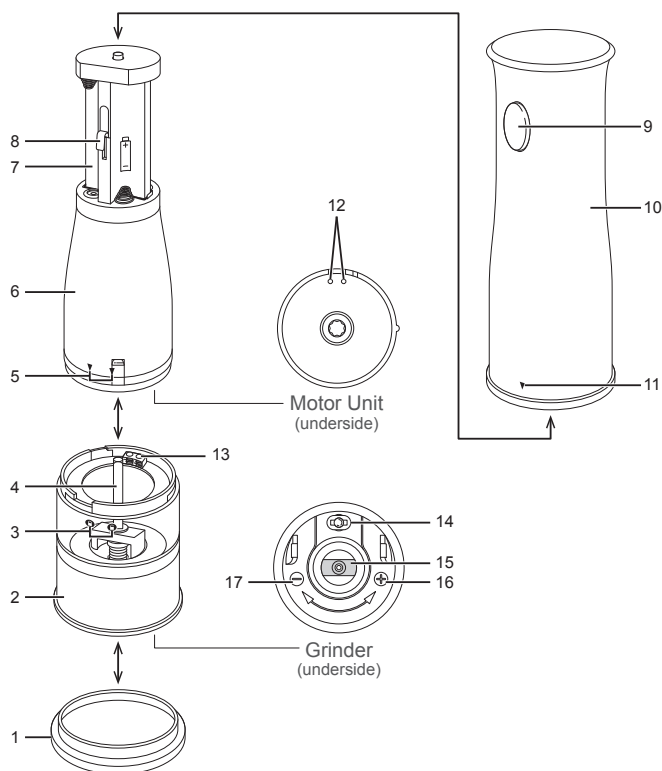
If you live in New Zealand Please visit: www.spectrumbrands.co.nz/warranty

Registration of your warranty is not compulsory, it gives us a record of your purchase AND entitles you to receive these benefits: Product information; Hints and tips; Recipes and news; Information on special price offers and promotions.

Any questions? Please contact Customer Service for advice.



Congratulations on the purchase of your Russell Hobbs appliance. Each unit is manufactured to ensure safety and reliability. Before using the appliance for the first time, please read the instruction booklet carefully and keep it for future reference. Pass it on if you pass on the appliance.

When using electrical appliances, basic safety precautions should always be followed.



- | | |
|----------------------------|-----------------------------|
| 1. Base. | 10. Cover. |
| 2. Grinder. | 11. Cover pointer ▼. |
| 3. Lock . Unlock . | 12. Brass connection pins. |
| 4. Spindle. | 13. Bulb connection points. |
| 5. Motor unit pointers ▼▼. | 14. Light bulb. |
| 6. Motor unit. | 15. Knob. |
| 7. Battery compartment. | 16. ⊕ = coarse grind. |
| 8. Striker panel. | 17. ⊖ = fine grind. |
| 9. Button. | |

DISMANTLING

- Grip the cover in one hand and the grinder in the other.
- Turn the cover to move the pointer ▼ from lock  to unlock .
- Lift the cover off.
- Lift the motor unit off the grinder





FIT BATTERIES

- For maximum performance, always use good quality batteries.
- Fit 4 AA batteries (not included) into each motor unit.
- The polarities ("+" & "-") are marked on the battery compartment.

FILL THE GRINDERS

- Ensure you are using grinder quality seasoning.
- Fill the grinders with peppercorns, sea salt, dried herbs or spices.
- Do not overfill; this will cause problems during reassembly.

ASSEMBLING

- Align the pointers ▼▼ on the motor unit with the lock  and unlock  on the grinder. Lower the motor unit onto the grinder.
- Align the cover pointer ▼ with the unlock  on the grinder and push the cover down firmly.
- Turn the cover to align the pointer ▼ with the lock .

ADJUST THE GRIND

- Tip the whole mill upside down and turn the knob clockwise towards the "-" until it won't turn any further.
- Turn the knob one turn anti-clockwise towards the "+".

NOTE: Do not turn the knob more than 6 complete rotations clockwise towards the "-". This may unscrew the knob from the spindle.

- Tip the mill right way up and press and release the button.
- Check the grind size and if required, readjust to suit.
- Sit the mill on the base.
- Do the same for the other mill.

USING THE MILLS

- Hold the mill directly over food to be seasoned and press the button. The motor will run while the button is pressed.
- Release the button to stop the motor.

CARE AND MAINTENANCE

- Wipe the outside of the mills with a slightly dampened cloth.
- Wipe any excess seasoning from the underside of the grinders with a dry cloth.
- Do not use the mills over cooking as moisture from the steam can clog the grinding mechanism.
- If the seasoning becomes damp and/or the mechanism becomes clogged, completely empty the grinder, open the grinding knob fully and wash the grinder in warm water. A mild dishwashing detergent may be used.
- Allow the grinder to dry completely before refilling and reassembling.

BATTERIES

- Check that the batteries are fitted correctly - there is a guide inside the battery compartment.
- When you need new batteries, change them all. Do not use new and used batteries together.
- Ensure that you use the same battery type together i.e. alkaline or heavy duty.
- Do not leave batteries fitted in the mills if they are not used regularly. The batteries may leak and damage the mills.
- Only recharge batteries that are specifically designed to be recharged.

SWITCH

- Check that the striker panel has not been pushed inwards, towards the motor unit, during assembly.

NOTE: You may need to raise the striker panel slightly to ensure contact with the button.

LIGHT BULB

- Check that the bulb connection points and brass connection pins are clean and clear of any seasoning. Clean with a coarse brush or steel wool, and dust off afterwards.
- To replace the bulb, tip the whole mill upside down.
- Grip the bulb and pull it upwards.

NOTE: You may feel some initial resistance - this is normal.

- Align the wires on the replacement bulb with the contacts inside the bulb socket.
- Push the bulb downwards into the bulb socket.

IMPORTANT SAFEGUARDS

When using electrical appliances, basic safety precautions should always be followed, including:

1. This appliance must only be used by or under the supervision of a responsible adult.
2. Do not immerse the appliance in liquid.
3. Store the appliance away from direct sunlight.
4. Do not use the appliance for any purpose other than those described in this instruction booklet.
5. Do not use the appliance if it is damaged or has malfunctioned.

SAVE THESE INSTRUCTIONS
THIS APPLIANCE IS FOR HOUSEHOLD USE ONLY



Russell Hobbs

www.russellhobbs.com.au

www.russellhobbs.co.nz

