



Russell Hobbs



BAGLESS VACUUM CLEANER

2 YEAR WARRANTY

MODEL RHF218C

Part No. T22-5003717

RHF218C_IB_FA_240317

INSTRUCTIONS & WARRANTY

IMPORTANT SAFEGUARDS

When using electrical appliances, basic safety precautions should always be followed, including:

1. The cleaner must only be used by or under the supervision of a responsible adult. Use and store it out of reach of children.
2. This appliance is NOT a toy. Children should be supervised to ensure they do not play with this appliance.
3. This appliance is not intended for use by persons (including children) with reduced physical, sensory or mental capabilities, or lack of experience and knowledge, unless they have been given supervision or instruction concerning use of the appliance by a person responsible for their safety.
4. Do not immerse the cleaner in any liquid and do not use it anywhere damp or wet.
5. Do not use the cleaner near a gas, oil (including paraffin) or open fire. The flame may be drawn towards the cleaner causing a fire hazard.
6. To avoid personal injury, keep hair, clothing, fingers, face, etc. away from the brush/ suction inlet of the cleaner.
7. Do not use the cleaner to pick up any of the following:
 - **do not attempt to pick up liquid** – this cleaner is designed for dry substances only.
 - **do not pick up items that may ignite spontaneously** – e.g. matches, pieces of firelighter.
 - **do not pick up anything burning or smouldering** – e.g. cigarette ends, ashes or embers.
 - **do not pick up spillage from toner cartridges** – the fine carbon particles may pass through the filter, short circuit the motor and burn it out.
 - **do not pick up cement or plaster dust** – these can combine with moisture in the air, clog the filter, scour the bin and possibly cause the motor to overheat and burn out.
 - **do not pick up sharp objects** – they may pierce the filter and damage the motor.
 - **do not pick up biological waste** – you will eventually have to clean it off the filter and there is a possibility of viral particles passing through the filter and entering your air supply.
8. If using the cleaner outdoors (e.g. cleaning the car), connect it to a power outlet that is protected by a safety switch.
9. Do not leave the cleaner unattended when plugged in.
10. To prevent damage to the power cord, avoid catching, stressing or running over the cord while vacuuming.
11. Be sure the power cord does not become a tripping hazard to you or others while vacuuming.
12. If using the cleaner to vacuum stairs, place the cleaner to avoid falling and be sure to work above the cleaner to avoid injury should the unit fall.
13. Do not use the cleaner to vacuum people, pets or animals of any sort.
14. Unplug the cleaner and retract the cord when not in use.
15. Do not use the cleaner for any purpose other than those described in these instructions.
16. Use only the accessories supplied with the unit.
17. Do not leave the cleaner sitting in sunlight. Prolonged exposure to UV rays may damage the plastic.
18. Do not operate this appliance with a damaged cord/plug or after the appliance has malfunctioned, or been dropped or damaged in any manner. Contact Customer Service for replacement, examination, repair or adjustment.
19. There are no user serviceable parts other than the filters and external attachments/ accessories. If the power cord is damaged, it must be replaced by the manufacturer or similarly qualified person in order to avoid hazard.
20. For added safety, electrical appliances should be connected to a power outlet that is protected by a residual current device (RCD), also often referred to as a 'Safety Switch'. Your switchboard may already incorporate an RCD. If unsure, call an electrician for verification and fitting if necessary.

SAVE THESE INSTRUCTIONS. THIS APPLIANCE IS FOR HOUSEHOLD USE ONLY

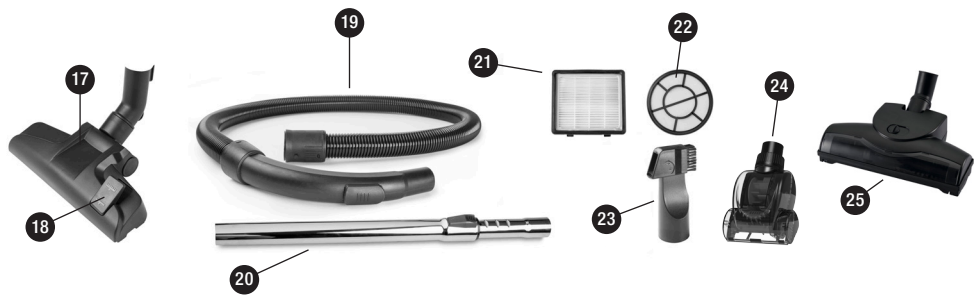
Congratulations on the purchase of your new Russell Hobbs appliance. Each unit is manufactured to ensure safety and reliability. Before using the appliance for the first time, please read this instruction booklet carefully and keep it for future reference. Pass it on if you pass on the appliance.

When using this appliance, basic safety precautions should always be followed.



1. Dust bin
2. Cyclonic filter (located in dust bin)
3. Hose inlet
4. Flexible hose
5. Nozzle
6. Suction control
7. Extendable tube
8. Extendable tube release button

9. Combination floor tool
10. Max fill line (not shown)
11. Lid latch for HEPA grade intake filter access
12. Carrying handle
13. Dust bin release button
14. Variable Speed Control (not shown)
15. ON/OFF button
16. Scratch-resistant rubber wheels



- 17. Combination floor tool
- 18. Combination floor tool pedal
- 19. Flexible hose
- 20. Extendable tube
- 21. HEPA exhaust filter

- 22. HEPA grade intake filter
with removable black sponge filter
- 23. Crevice tool with small brush
- 24. Mini pet turbo tool
- 25. Turbo floor tool

BEFORE USING FOR THE FIRST TIME

Check to confirm you have unpacked all of the components of your vacuum cleaner:

- Vacuum cleaner body
- Flexible hose
- Extendable tube
- Combination floor tool
- Crevice tool with small brush
- Turbo floor tool
- Mini pet turbo tool

FITTING THE HOSE

- Push the hose end into the inlet. You will hear a click as it locks into position.
- Give it a gentle tug to check it is properly locked.

POWER CORD

- Pull as much cable as you need from the back of the cleaner.
- A yellow band around the cable will appear when there is approximately one metre of cable left.
- Stop pulling when the red band around the cable appears. This indicates that you are approaching the cable limit.

CAUTION: Avoid extending the power cord past the red band. Pulling beyond this may result in damage to the cord connection.

- When vacuuming larger spaces and multiple rooms you may need to turn the vacuum off and select another power outlet.
- Avoid tangling the power cord around furniture and other obstacles as it may become a tripping hazard to you and other people.

CARRYING AND MOVING THE CLEANER

- Lift the cleaner only by the carrying handle.
- Do not sit it upright as it will fall over.
- The vacuum cleaner should follow you as you vacuum. If you feel resistance, check the vacuum or power cord is not tangled or caught. Pulling the vacuum under stress by the hose will cause the hose to stretch and can damage the hose connection and power cord.

EXTENDABLE TUBE

- Fit the extendable tube to the nozzle on the flexible hose.
 - a) Push the tube release in the direction of the arrows on the release button and keep it pressed.
 - b) Pull out as much of the inner tube as you need and then release the button; it is best to retract the tube for storage.
- Push the narrow end of the extendable tube on to the nozzle. Choose a tool and push it onto the wide end of the tube.



CHOOSE THE TOOL FOR THE JOB

- The combination floor tool, mini pet turbo floor tool, turbo floor tool and crevice tool will fit on the nozzle or on the end of the extendable tube. The extendable tube fits on the end of the nozzle.

COMBINATION FLOOR TOOL:

- The combination floor tool is usually used with the extendable tube for floors and carpets.
- Press the rear of the brush pedal to extend the bristles for hard floor coverings such as vinyl, tiles and timber.
- Press the front of the brush pedal to retract the bristles for soft floor coverings such as rugs and carpets.

TURBO FLOOR TOOL:

- The turbo brush is normally used with the extendable tube for floors and carpets.
- Slide the tab on top of the brush to  for floors without carpet or carpet with short pile. Slide it to  for rugs and long pile carpets.

MINI PET TURBO TOOL:

- The mini pet turbo tool can be used with or without the extendable tube and is perfect for removing pet hair from furniture.

CREVICE TOOL:



- Use the crevice tool for tight narrow spaces. It can be attached to either the end of the extendable tube or the nozzle of the flexible hose.

NOTE: The small brush is part of the crevice tool. To store it, turn it back, parallel to the crevice tool.


SUCTION CONTROL

- Different carpets/surfaces may require different levels of suction. For example, you may find the floor tool suction is too strong on a tight loop-pile carpet causing the tool to grip the surface and push surface debris along. In this instance, reducing the suction by opening the nozzle suction control will allow the floor tool to glide more easily over the carpet surface.

There are two suction controls on this vacuum cleaner:

- a) Use the nozzle suction control to reduce the grip the tools apply to the surfaces being cleaned.
Move it away from the nozzle end to reduce suction or move towards the nozzle end for maximum suction.
- b) Use the variable speed control on the vacuum body (min <-> max) to reduce the suction power and volume of air being drawn into the vacuum. Use this when cleaning more delicate materials such as drapes. Slide the control towards the cord rewind button  to increase suction power; slide it towards the on/off  button to decrease suction power.

PLUG IN

CAUTION: If you have accidentally pressed the power on/off button,  the vacuum cleaner will come on when you plug it in.

- Plug the power cord into a wall power outlet near the area to be cleaned, and switch the power on.


SWITCHING ON

- Press and release the power on/off  button to turn the cleaner on.


CLEANING

- Move the tool over the surface, cleaning a small area at a time.
- When you move to a new area, overlap the previous area to make sure none of the surface is missed.

SWITCHING OFF

- If you would like to change tools or if you have finished vacuuming, press and release the power on/off button  to turn the cleaner off.


FINISHED CLEANING?

- Switch the power off and remove the plug from the wall power outlet.
- Stand clear of the cord, press and hold the cord rewind button .
- Keep clear of the cord, as it rewinds quite quickly and can flick up or catch on corners and furniture.

NOTE: *If the cord does catch on an object, release the rewind button and it will discontinue rewinding.*

- If the power cord does not retract fully into the unit you may need to pull it out a little, and then press and hold the cord rewind button again. You may need to push the plug end into the storage area manually.

REMOVING AND EMPTYING THE BIN

- In order to maintain maximum performance, empty the dust bin after each use.
- The cleaner will continue to work until the dust bin is full, but you may find a loss of performance as it nears capacity.
- Switch the power off, remove the plug from the wall power outlet, and leave for a minute to allow the dust settle.
- To remove the bin, press the bin release button  on the handle and pull the bin upwards out of the cleaner.
- Lower the dust bin into your rubbish bin so the bottom of the dust bin is below the rim. This prevents dust dispersing into the air.
- Alternatively, spread some newspaper on the floor.
- Press and release the catch on the bottom of the dust bin to open the lower flap and empty the dirt into the rubbish bin, or onto the newspaper.
- Do not tap the open dust bin on the sides of your rubbish bin as this could result in damage to the dust bin.
- Lift the lower flap of the dust bin in an upwards direction and click the flap into place to close the dust bin.
- Fit the dust bin back into the vacuum body and click it into place (put the bottom in first, then gently push the top down into position. You will hear the locks click into place).

CHECK THE FILTERS

- While emptying the bin, check the filters – blocked filters quickly reduce suction.
- If the filters look clogged or dirty, it is time to clean them.
- See 'CLEANING THE FILTER' section for further instructions.
- If the filters do not need cleaning, refit the dust bin - put the bottom in first, then gently push the top down into position. You will hear the locks click into place.
- Check that it is secure.

CLEANING THE VACUUM CLEANER

NOTE: *To maintain maximum cleaning performance, empty the dust bin when filled to max level, and clean or replace the HEPA exhaust filter, HEPA grade intake filter (with removable black sponge filter), the cyclonic filter, motor inlet sponge filter, and the motor dust filter often.*

- Before cleaning, switch the power off and remove the plug from the wall power outlet.
- Do not put any part of the cleaner in a dishwasher.
- Do not use harsh, abrasive or alkaline cleaning agents or solvents.

- Wipe external surfaces with a damp cloth. A dab of washing-up liquid will remove stubborn stains.
- Wipe the tools with a damp cloth or hand wash in warm soapy water. Rinse under a running tap to remove all traces of soap, then let air dry – do NOT refit until they are completely dry.
- Wipe the extendable tube and hose with a damp cloth. Check they are dry before refitting – do NOT put them in water, you will damage them.
- Wash the dust bin in warm soapy water with a soft cloth or sponge (remove all filters first). Rinse to remove all traces of soap, then let it air dry – do NOT refit until it is completely dry.

CLEANING THE FILTERS

While emptying the dust bin, check the filters – blocked filters quickly reduce suction. Make sure the space you are using is protected with an old towel or some newspaper as this process can be messy.

CYCLONIC FILTER

To remove the cyclonic filter

- The cyclonic filter is located in the dust bin.
- To remove the bin, press the bin release button on the handle and pull the bin upwards out of the cleaner.
- Open the dust bin lid by pulling the catch at the end of the handle.
- Remove the Hepa grade intake filter.
- Grasp the top part of the cyclonic filter and pull it out.
- Clean cyclonic filter and filter screen using a small brush. If needed, wash with mild soap and rinse with cold tap water. Do not use any abrasive cleaners.
- Shake excess water from cyclonic filter and let it dry completely before inserting back into the unit.



To replace cyclonic filter

- Insert the cyclonic filter back into the dust bin and align the tab on the top of the filter with the slot on dust bin.
- Insert the filter back into the dust bin and close the lid.
- Insert dust bin back into the vacuum cleaner.

TIP: Pull on the handle to verify that it is secured in place.

HEPA GRADE INTAKE FILTER ASSEMBLY

(includes removable black sponge filter)

The HEPA grade intake filter with removable sponge filter is located at the top of the dust bin inside the lid.

- Open the lid by pulling the catch at the end of the handle.
- Remove the HEPA grade intake filter.
- Separate the black sponge filter from the HEPA grade intake filter.
- Clean the sponge and the filter with warm soapy water, rinse and allow to dry before reinstalling.
- Reinstall black sponge filter back into the rear of the HEPA grade intake filter.
- Insert filter back into the dust bin or replace with a new filter and close the lid.

NOTE: Place the filter back into the bin with the black sponge filter facing inwards, towards cyclonic filter.

- Insert dust bin back into the vacuum cleaner.



HEPA EXHAUST FILTER

The HEPA exhaust filter is located at the back of the vacuum cleaner.

- Push down the top locking clip on the exhaust filter cover and pull out.
- Grasp the HEPA exhaust filter clip whilst pushing down and pull outwards.
- Clean the HEPA filter with warm soapy water and rinse, allow to dry thoroughly before reinstalling.
- Insert the HEPA filter back into the vacuum by aligning the two securing clips with the recessed ledge in the back of the vacuum and the filter seal facing toward the vacuum. Add snap cover back in place. Or replace with a new filter and snap cover back in place.

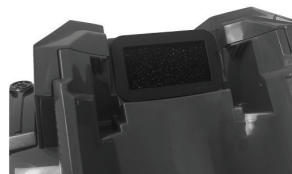


NOTE: After a period of time the filter will look worn, contact consumer service for replacement.

MOTOR INLET SPONGE FILTER

The motor inlet sponge filter is located at the top of the housing directly behind the dust bin.

- To access this filter, remove the dust bin.
- The motor inlet sponge filter is in the cavity near the top of the unit.
- Grasp the sponge filter and pull out.
- Clean the sponge filter with warm soapy water, rinse and allow to dry thoroughly before reinstalling.
- Insert the sponge filter back into the cavity and refit the dust bin or replace with a new filter.



BLOCKAGES

If the cleaner starts to get noisy and you start to lose suction there is possibly a blockage.

- Switch the power off and remove the plug from the wall power outlet.
- Spread some newspaper or an old towel on the floor to avoid making a mess.
- If you are using one of the tools, remove and check it first.
- Remove the hose and check it – leave it disconnected until you have completed the next steps.
- Remove the dust bin and check the inlet for any blockages.
- If there is a blockage, try and remove it with your hands. Do not use anything sharp.
- Check all the filters, then reassemble.

NOTE: If you have not cleared the blockage following these steps, please ring customer service.

NOTE: This vacuum cleaner is equipped with an overheat protection system. If for some reason your vacuum overheats, the motor will turn off. Should this occur, turn the switch off and unplug the vacuum from the wall outlet. Allow the motor to cool for a minimum of 30 minutes prior to re-starting the unit. To prevent overheating make sure that the filters and the dust bin are clean.

Spectrum Brands Australia Pty Ltd

Locked Bag 3004 Braeside

Victoria 3195 Australia

Customer Service in Australia

TollFree: 1800 623 118

Email: info@spectrumbrands.com.au

Website: www.spectrumbrands.com.au

Spectrum Brands New Zealand Ltd

PO Box 9817 Newmarket

Auckland 1149 New Zealand

Customer Service in New Zealand

TollFree: 0800 736 776

Email: service@spectrumbrands.co.nz

Website: www.spectrumbrands.co.nz

Spectrum Brands Australia Pty Ltd and Spectrum Brands New Zealand Ltd Warranty Against Defects

In this warranty:

Australian Consumer Law means the Australian consumer law set out in Schedule 2 to the Competition and Consumer Act 2010;

CGA means the New Zealand Consumer Guarantees Act 1993;

Goods means the product or equipment which was accompanied by this warranty and purchased in Australia or New Zealand, as the case may be;

Manufacturer, We or us means:

1. for Goods purchased in Australia, Spectrum Brands Australia Pty Ltd ABN, 78 007 070 573;
or
2. for Goods purchased in New Zealand, Spectrum Brands New Zealand Ltd, as the case may be, contact details as set out at the end of this warranty;

Supplier means the authorised distributor or retailer of the Goods that sold you the Goods in Australia or in New Zealand; and

You means you, the original end-user purchaser of the Goods.

1. Our goods come with guarantees that cannot be excluded under the Australian Consumer Law, or the CGA. You are entitled to a replacement or refund for a major failure and compensation for any other reasonably foreseeable loss or damage. You are also entitled to have the goods repaired or replaced if the goods fail to be of acceptable quality and the failure does not amount to a major failure.
2. The benefits provided by this Warranty are in addition to all other rights and remedies in respect of the Goods which the consumer has under either the Australian Consumer Law or the CGA. The original purchaser of the Goods is provided with the following Warranty subject to the Warranty Conditions:
3. We warrant the Goods for all parts defective in workmanship or materials for a **(Warranty Period)** period of 2 years from the date of purchase.

If the Goods prove defective within the Warranty Period by reason of improper workmanship or material, we may, at our own discretion, repair or replace the Goods without charge.

Warranty Conditions

4. The Goods must be used in accordance with the manufacturer's instructions. This Warranty does not apply should the defect in or failure of the Goods be attributable to misuse, abuse, accident or non-observance of manufacturer's instructions on the part of the user. As far as the law permits, the manufacturer does not accept liability for any direct or consequential loss, damage or other expense caused by or arising out of any failure to use the Goods in accordance with the manufacturer's instructions.
5. Exhaustible components (such as batteries, filters and brushes) of the Goods are included under this Warranty only where there is a defect in workmanship or materials used.
6. The warranty granted under clause 3 is limited to repair or replacement only.
7. Any parts of the Goods replaced during repairs or any product replaced remain the property of the manufacturer. In the event of the Goods being replaced during the Warranty Period, the warranty on the replacement Goods will expire on the same date as for the Warranty Period on the original Goods which are replaced.
8. In order to claim under the warranty granted under clause 3 you must:
 - (a) Retain this warranty with your receipt/proof of purchase; and
 - (b) Return the Goods to us at the relevant address or to the Supplier by prepaid freight within the Warranty Period accompanied with (i) the legible and unmodified original proof of purchase, which clearly indicates the name and address of the Supplier, the date and place of purchase, the product name or other product serial number and (ii) this warranty.
9. This warranty is immediately void if:
 - (a) Any serial number or appliance plate is removed or defaced;
 - (b) The Goods have been serviced or otherwise repaired by a person not authorised to do so by us or where non approved replaced parts are used.
10. The Goods are designed for domestic use only. The Goods must be connected to the electrical voltage requirements as specified in the ratings label located on the Goods.
11. This warranty does not cover the cost of claiming under the warranty or transport of the Goods to and from the Supplier or us.
12. This warranty is only valid and enforceable in Australia against Spectrum Brands Australia Pty Ltd and in New Zealand against Spectrum Brands New Zealand Ltd.

Contact us or the Supplier for further details.

Register your product online

If you live in Australia please visit: www.spectrumbrands.com.au/warranty

If you live in New Zealand Please visit: www.spectrumbrands.co.nz/warranty

Registration of your warranty is not compulsory, it gives us a record of your purchase AND entitles you to receive these benefits: Product information; Hints and tips; Recipes and news; Information on special price offers and promotions.

Any questions? Please contact Customer Service for advice.



www.russellhobbs.com.au

www.russellhobbs.co.nz

RUSSELL HOBBS® and logo are Trade Marks of Spectrum Brands, Inc., or one of its subsidiaries.
Manufactured in China to Spectrum Brands specifications. ©2017 Spectrum Brands, Inc.