



# Russell Hobbs

instructions,  
troubleshooting guide,  
and guarantee

Problems?  
Don't take it back  
to the shop,  
they won't be able  
to fix it.



Ring the helpline

# 0845 658 9700

it's a local rate number

Read the instructions before using your vacuum cleaner, and keep them safe. If you pass the cleaner on, pass on the instructions too.

## **important safeguards**

Follow basic safety precautions, including the ones below. It's quite a list, but most of them are simple common sense.

- 1 The cleaner must only be used by or under the supervision of a responsible adult. Use and store it out of reach of children.
- 2 Don't put the cleaner in water or any other liquid, and don't use it anywhere damp or wet.
- 3 Don't use the cleaner near a gas, oil (including paraffin), or open fire. The flame may be sucked towards the cleaner, causing a fire hazard.
- 4 Keep hair, clothing, fingers (and toes), away from the end doing the sucking, and from the brush roller. It won't drag you bodily into the bin, but it may give you a bit of a start.
- 5 Stuff you mustn't pick up:
  - a) don't pick up water or any other liquid – you'll short the motor.
  - b) don't pick up anything that may ignite spontaneously, like matches, or bits of fire-lighter.
  - c) don't pick up anything burning or smouldering, like cigarette ends, ashes, or embers. Wait till they're extinguished and cold.
  - d) don't pick up spillage from toner cartridges – the fine carbon particles may pass through the filter, short circuit the motor, and burn it out.
  - e) don't pick up cement or plaster dust – they'll combine with moisture in the air, clog the filter, scour the bin, and maybe burn out the motor too.
  - f) don't pick up anything sharp – you may puncture the filter and damage the motor.
  - g) don't pick up anything biological – you'll eventually have to clean it off the filter, and there's always the possibility that viral particles may pass through the filter, reach the air outlet, and enter your air supply.
- 6 If you use the cleaner outdoors (e.g. cleaning the car), connect it to the electricity supply via a residual current device (RCD), with a rated residual operating current not exceeding 30mA. Don't let the cleaner get wet.
- 7 Don't leave it unattended when plugged in.
- 8 Keep an eye on the cable, so it doesn't catch on anything, or trip anyone up. Don't run the cleaner over the cable, you'll damage it.
- 9 If you're using the cleaner on stairs, sit it where it can't topple, and keep it below you, so if it does fall, it doesn't land on you.
- 10 Don't use the cleaner on people, animals, birds, or pets.
- 11 Unplug the cleaner and wind the cable round the cable carriers when not in use, before moving and before cleaning.
- 12 Don't use the cleaner if the bin is full – switch off, unplug, empty.
- 13 Don't use the cleaner for any purpose other than those described in these instructions.
- 14 Don't use accessories or attachments other than those we provide.
- 15 Don't leave the cleaner in direct sunlight.



16 Don't use the cleaner if it's damaged or malfunctions.

17 If the cable or plug is damaged, return the cleaner, in order to avoid hazard (see "service" on the back page).

## **household use only**

### **before using for the first time**

Remove the packaging, but keep it till you're sure the cleaner is working properly.

### **filters**

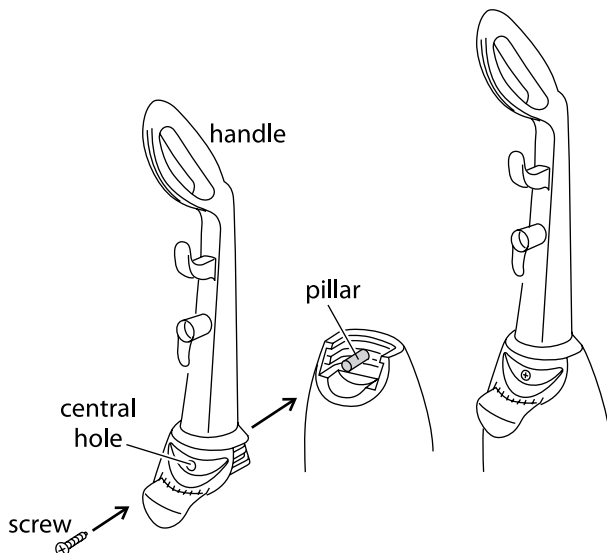
It's vital you keep the filters clean. If the filters get blocked, you'll lose suction rapidly. We've made them easy to remove, and easy to clean – the rest is down to you.

### **count the bits**

The box should contain the cleaner itself, the handle, the extension tube, the crevice tool, and the small brush. make sure you've got them all before you dispose of the packaging.

### **fit the handle**

- 1 You'll need a cross-head screwdriver for this.
- 2 Unscrew the screw from the pillar at the top of the cleaner.
- 3 Align the grooves and raised areas in the bottom the handle with those inside the top of the cleaner.
- 4 Slide the handle into the cleaner.
- 5 Push the screw through the hole in the centre bottom of the handle, and screw it back into the pillar – don't overtighten it.



- 6 If you ever need to remove the handle, remove the screw from the central hole, slide the handle away from the top of the cleaner, then replace the screw in the pillar, to prevent its loss.
- 7 Don't mess about with the screws on either side of the central hole – they hold the handle assembly together.

## fit the tube and small brush

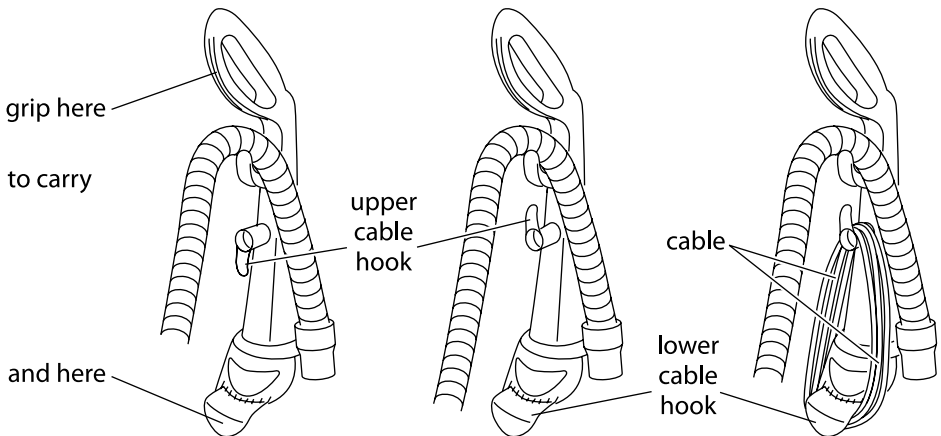
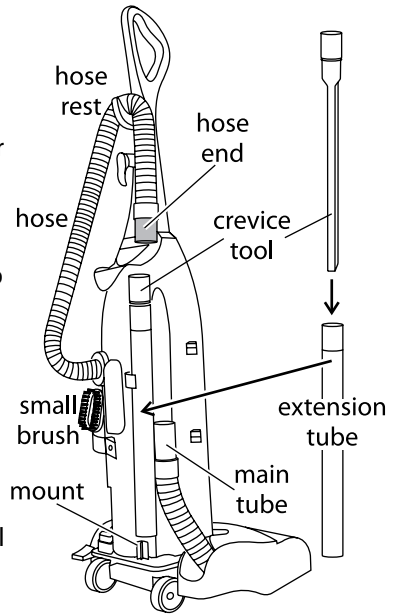
- 8 Turn to the rear of the cleaner.
- 9 Push the small brush into the clip on the left of the cleaner.
- 10 Slide the crevice tool inside the extension tube for ease of storage.
- 11 a) put the end of the extension tube over the mount on the bottom right of the cleaner  
b) push the top of the extension tube into the clip on the right of the cleaner.  
c) loop the hose over the hose rest on the handle

## the cable

- 12 Turn the upper cable rest to point upwards, then wind the cable round the upper and lower cable hooks.
- 13 When you want to release the cable, simply turn the upper hook downwards, and the cable will fall free.

## carrying the cleaner

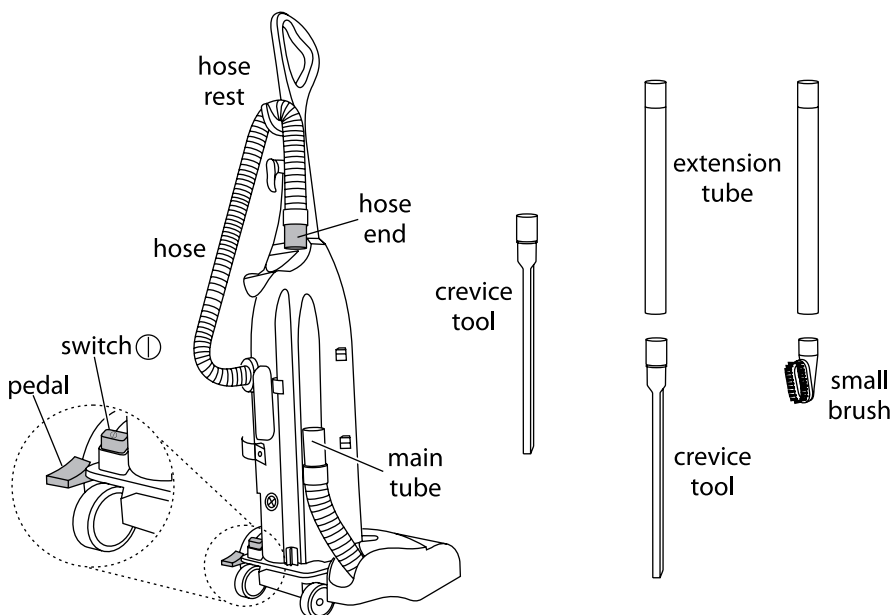
- 14 Normally, you'd just grab it by the handle, and trundle it round on its wheels, but if you want to carry it upstairs, for instance, you need to be a bit more circumspect.
- 15 It's fairly heavy, and it's an awkward shape to carry, so grip the lower cable hook in one hand, grip the top of the cleaner handle with the other, and lift.



## what fits to what

- 16 The hose is permanently attached to the cleaner at one end.
- 17 The other end may be attached to the main tube or one of the accessories.
- 18 The accessories are the crevice tool, the extension tube, and the small brush.
- 19 To use the accessories, see opposite.

- upright cleaning push the hose end over the main tube – this connects the main brush, on the bottom of the cleaner, to use the cleaner upright
- crevice tool push the hose end over the crevice tool – as its name implies, use this tool to reach down the sides of upholstery, and into awkward spaces, nooks, and crannies nothing else can reach
- crevice tool and extension tube push the hose end over the thick end of the extension tube, then push the thin end of the extension tube into the crevice tool – use this to reach curtain rails, picture rails, and covings
- small brush and extension tube push the hose end over the thick end of the extension tube, then push the thin end of the extension tube into the small brush – use it to remove pet hair, lint, and dust from blinds, curtains, and upholstery; to brush/clean awkward corners



## pedal

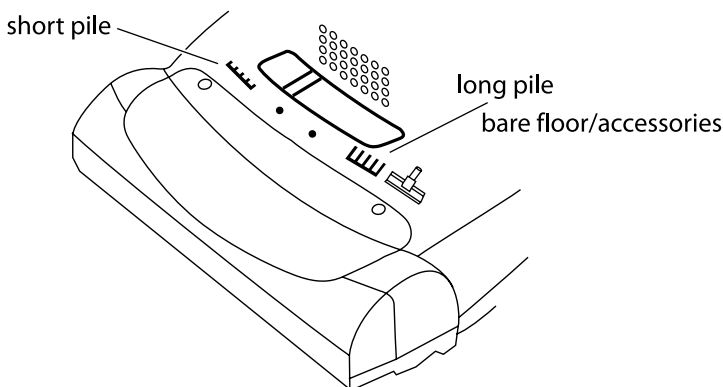
- 20 The pedal locks the cleaner and base together.
- 21 To use the cleaner as an upright, press the pedal down with your toe, ease the handle back, then take your toe off the pedal.
- 22 This lets you push the cleaner forward and backward, to vacuum the floor.

## switch ①

- 23 Press and release the switch ① with your toe, to turn the motor on.
- 24 If you've finished, if you want to change the brush height for a different floor covering, if you want to change from using it upright to using the hose, or if you just want to stop for a cup of tea, press and release the switch ① with your toe, to turn the motor off.
- 25 That's the rear of the cleaner dealt with. Let's turn it round and use it.

## set the floor type

- 26 Slide the brush height control to the bare floor or accessories setting for bare floors, or to long, medium, or short pile, for carpet.  
Tilt the handle back, to raise the cleaner slightly from the floor, to make moving the brush height control easier.
- 27 Use the bare floor or accessories setting for the hose, tubes, and accessories, to prevent the brush continually hitting the surface it's sitting on.



## plug in

**caution** If you've inadvertently kicked the switch, the cleaner may start up when you plug it in – press the switch ① with your toe to switch it off.

- 28 Use a socket near the area to be cleaned, plug in, and switch the socket on, if it's switchable.

## kick the pedal

- 29 Stand behind the cleaner, press the pedal down with your toe, ease the handle back, then take your toe off the pedal.
- 30 The cleaner is now ready to use upright.

## switch on

- 31 Press the switch ① with your toe to switch it off

## cleaning

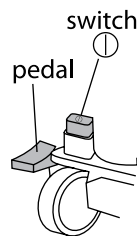
- 32 Move the cleaner over the floor, cleaning a small area.
- 33 When you move to a new area, overlap the previous area, to make sure none of the floor is missed.

## switch off

- 34 If you've finished, if you want to change the brush height for a different floor covering, if you want to change from using it upright to using the hose, or if you just want to stop for a cup of tea, press and release the switch with your toe, to turn the motor off.

## changing the floor type


- 35 Switch off and adjust the brush height control before moving the cleaner to a different floor covering.
- 36 Using the "wrong" setting won't do any harm, but you won't get the performance you would with the correct setting.



## **using the accessories**

37 Press and release the switch, to switch the motor off.

38 Push the handle forward till it's fully upright, and the pedal clicks into position to hold it there.

39 Move the brush height control fully over to the long pile  setting, to prevent the brush hitting the surface it's sitting on.

40 When you've finished with the crevice tool, extension tube, and small brush, separate them and mount them on the cleaner.

## **finished cleaning?**

41 Press and release the switch with a toe, to turn the motor off.

42 Push the handle forward, to fix the cleaner in the upright position.

43 Unplug the cleaner (switch the socket off first, if it's switchable).

44 Turn the upper cable hook to point upwards, and wind the cable round both cable hooks.

## **removing the bin**

You don't have to empty the bin after each use, but it's a very good idea. You shouldn't let it get more than about a third full.

Your cleaner will happily work till it's full to max, but you'll be wasting energy swirling yesterday's dust around. Energy that could be better used sucking up today's dust.

45 Switch off, unplug, put the cleaner in the upright position, and leave it for five to ten minutes, to let the dust settle.

46 Pull the latch, to open the door.

47 Put your fingers under the bin release, raise it slightly, to unlock the bin, then pull it forward, to lift the bin out of the cleaner.

48 As soon as the bin handle is clear of the cleaner, grip the bin handle, and let go of the bin release.

49 Carry the bin only by the bin handle. If you don't, and the lid comes off, you'll spill the contents all over your newly cleaner floor – not a good idea!

50 Lower the bottom of the bin into your dustbin, so the dirt can't blow around.

51 Press the "empty" lever beneath the handle, to release the trap, and dump the dirt into the dustbin.

52 Tap the bin, to dislodge any dirt from the corners.

53 Push the trap closed, and check that the lock has engaged with the "empty" lever.

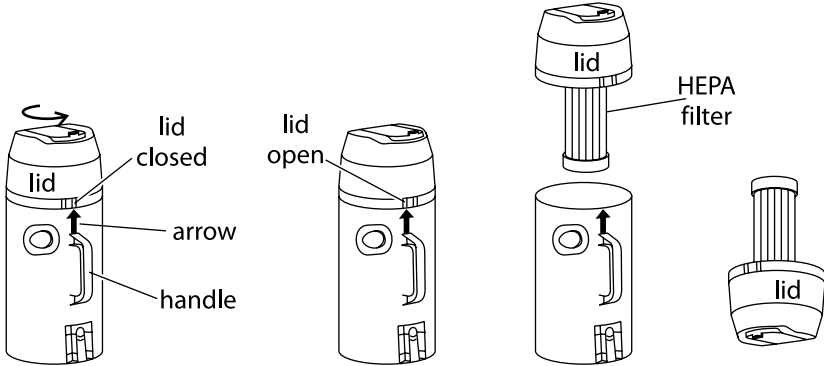
## check the HEPA filter

54 Hold the bin handle with one hand, hold the lid with the other.

55 Turn the lid about 15mm anti-clockwise, to align the arrow above the handle with the left of the two grooves on the side of the lid.

56 Lift the lid out – it may be a bit stiff, as it has the HEPA filter attached to it.

57 Turn it over, so the HEPA filter is on top.



58 If the HEPA filter is dirty, remove it, clean it, and replace it.

59 Don't handle the paper part of the HEPA filter, oils from your skin can cause dust particles to adhere to it.

60 Keep the lid/filter upside down.

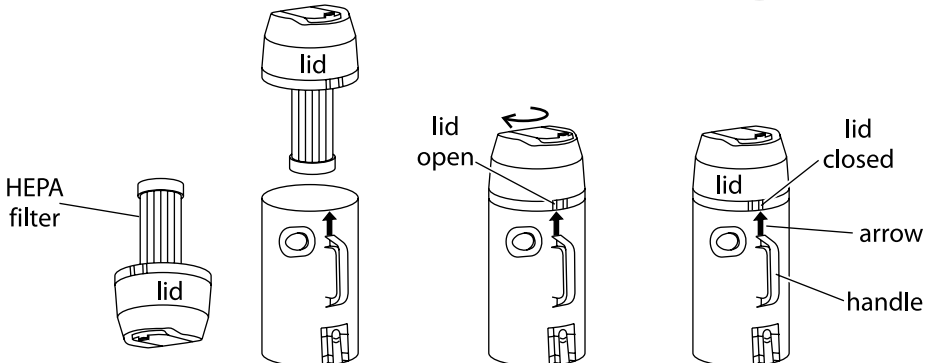
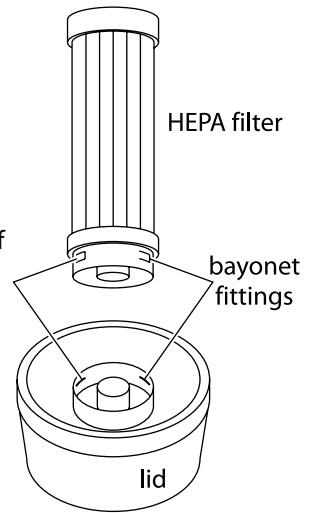
61 Grip the lid in one hand, grip the end of the HEPA filter in the other, and turn the filter about a centimetre anti-clockwise, to release it from the bayonet fittings.

62 Tap the plastic end of the filter gently against the inside of the dustbin, to remove surface dirt from the filter.

63 Hold the HEPA filter under a running tap, so the water runs over the outside surface only.

64 Leave it to air dry for 24 hours before replacing it.

65 To replace it, turn it clockwise into the lid, turn the lid and filter over, lower them into the bin, then turn 15mm clockwise, to align the arrow above the handle with the rightmost groove on the side of the lid.





## discolouration

66 The HEPA filter will discolour with use. This is normal, and won't affect its performance.

## check the pre-motor filter

67 While the bin is out, pick the pre-motor filter out of its housing with a fingernail, and check it.

68 If it's dirty, it can be washed in warm, soapy water.

69 Leave it to air dry for 24 hours before replacing it.

70 Replace it white side up.

## check the outlet filter

71 Press the top of the latch, pull the top of the filter holder away from the front of the cleaner, and have a look at the back of the filter.

72 If it's clean, push it back till the latch clicks into place.

73 If it's dirty, lift it up and away from the cleaner.

74 Move the bottom of the filter up and out of the hooks on the inside bottom of the filter holder.

75 Pull the top of the filter out, then down, to clear the hooks at the top of the filter holder (these hooks point downwards).

76 Wash the filter in warm, soapy water, and leave to air dry for 24 hours before replacing it.

77 To replace, push the top hooks through the slits in the top of the filter, then tuck the bottom of the filter under the hooks in the bottom of the filter holder.

78 Locate the tabs in their holes in the front of the cleaner, push the top of the filter holder back into the cleaner till the latch clicks into place.

## replace the bin

79 Tilt the bin forwards, then lower the bottom front of the bin over the lug at the front of the cleaner.

80 Push the top of the bin towards the cleaner, so the bin pivots on the lug, and the bin handle goes into the big gap at the rear of the cleaner.

81 Close the door.

## general cleaning

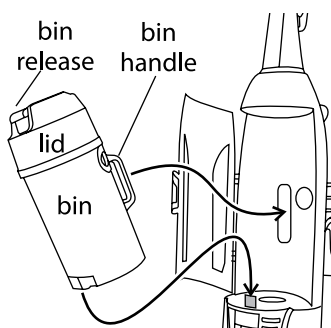
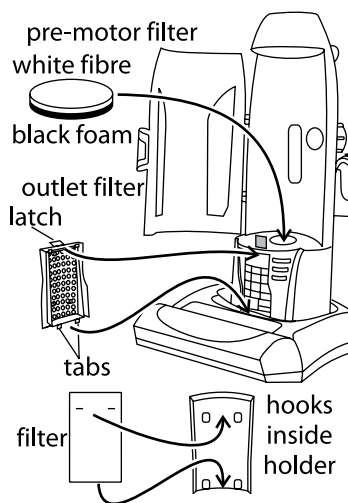
Switch the cleaner off and unplug it before cleaning.

Don't put any part of the cleaner in a dishwasher.

Don't use harsh or abrasive cleaning agents or solvents.

## timing

The amount and frequency of cleaning depends on the amount of use the cleaner gets, and the amount of time you can spare. Basically, the better you look after it, the longer it'll last. Keep an eye on it as you use it. Clean the filters when you empty the bin. If anything else needs cleaning, do it there and then, don't put it off, in case you forget.



## external surfaces

Wipe external surfaces with a damp cloth. A dab of washing-up liquid should remove stubborn stains, but clean it off afterwards, or it may itself cause staining.

## accessories

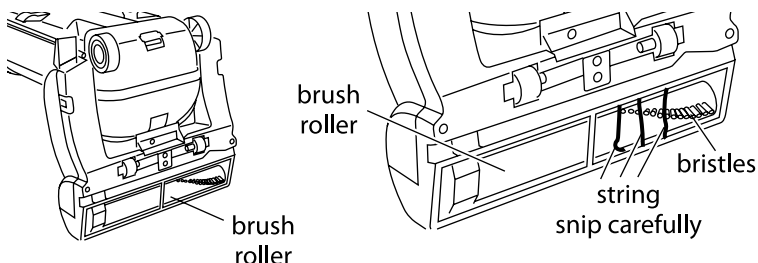
Wipe with a damp cloth, or hand wash in warm soapy water. Rinse to remove the soap, and air dry before replacing them.

## hose

Wipe with a damp cloth. You can use a dab of washing-up liquid to remove stubborn stains. Clean off all trace of the washing-up liquid, and check it's dry before refitting.

## brush roller

String, hair, and the like will wind round the brush roller. Upend the cleaner, remove anything jammed in the roller, and snip any string, etc. carefully with scissors. Don't cut the bristles.



## blockages

No matter how careful you are, sooner or later you're going to block the cleaner. Don't worry, we thought of that, we've fitted the motor with a temperature cut-out. A blockage will trigger the cut-out, and the motor will stop.

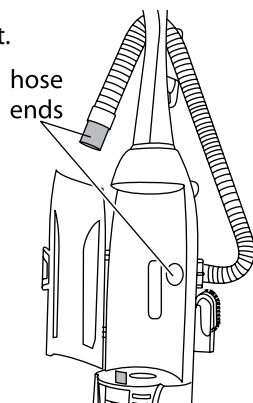
## don't panic!

If the motor cuts out while you're vacuuming, don't panic, it's not the end of the world, you've probably just blocked it up.

- 1 Switch off, unplug, and leave the cleaner for half an hour to cool down fully. This'll also reset the cut-out.
- 2 Spread a newspaper on the floor, you're going to make a mess.

## suction blocked

- 3 If you're using one of the accessories, remove and check it first.
- 4 Check the bin.
- 5 With the bin out, you can see the other end of the hose.
- 6 Pull the hose end off the accessory or the main tube at the back of the cleaner.
- 7 Check the hose by running a marble through it, or straighten it out, and pass a garden cane along its length.
- 8 Check the main tube which runs down to the brush roller. Don't use anything sharp. A finger, or the blunt end of a ball-point pen will do nicely.
- 9 If you need access to the other end of this tube, you'll have to remove the bottom – see "changing the belt" opposite.



10 If the blockage isn't clear by now, try again, as there's nowhere left to check.

11 Still not clear? – Ring the help line (back page).

### **no brush action (upright)**

12 If the brush isn't turning, the belt may have broken.

13 A broken belt may be due to wear and tear, but it may also be caused by a sudden blockage, due to something like a bit of gravel jamming the brush roller.

14 If this happens in use, you'll probably notice the change in pitch of the motor.

15 You'll have to change the belt.

### **changing the belt**

16 This is a bit fiddly, but it's not difficult

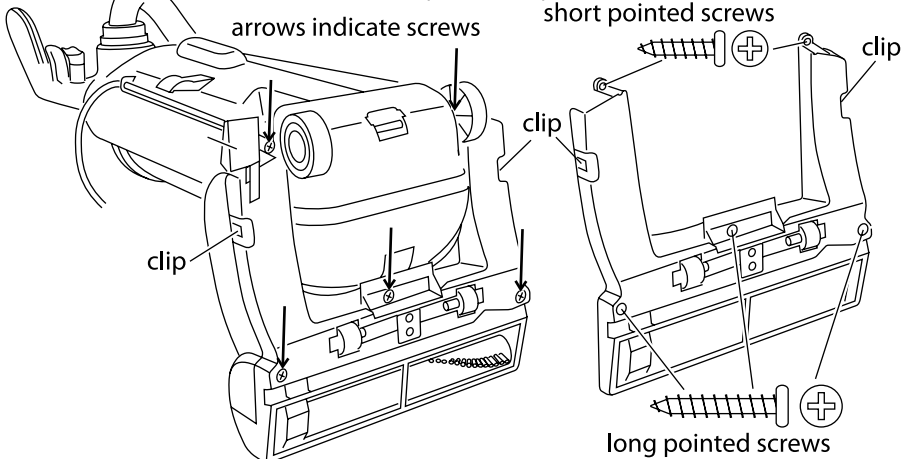
17 You'll need a crosshead screwdriver, and a replacement belt.

18 First – switch off, unplug, and let the cleaner cool down.

19 Slide the brush height control to the short pile position.

20 Lay the cleaner front-down.

21 Remove the five screws from the base (see below).



22 Press the clips on either side of the base, pull the rear (wheel-end) of the base away first, then the whole of the base.

23 Pull the pedal towards the wheels, to put the cleaner into upright mode. This'll flatten the cleaner, and make the belt and brush roller easier to get at.

★ If you just want to clear a blockage, jump to page 12.

24 Hold the brush roller by the end pieces, and lift it out.

25 Remove the remains of the old belt.

26 Put the new belt over the end of the motor spindle first.

27 Turn the end pieces till the long sides are towards the cleaner, and the arrows point upwards (well, roughly upwards).

28 All that's left is pull the roller against the tension of the belt, and, at the same time, slip the end pieces into their grooves. It sounds easy if you say it fast.

## here's how:

29 Put the belt between the guides.

30 Slip the end of the belt over the brush roller.

31 Hold the left side of the brush roller in your right hand.

32 Put two fingers of your left hand on the long side of the left end piece, and your thumb on the corner of the casing.

33 Pull the left of the roller against the belt, till you can just get the left end piece into the start of the left set of grooves.

34 Hold the left end piece in place with your left hand.

35 Slip the right end piece into its grooves.

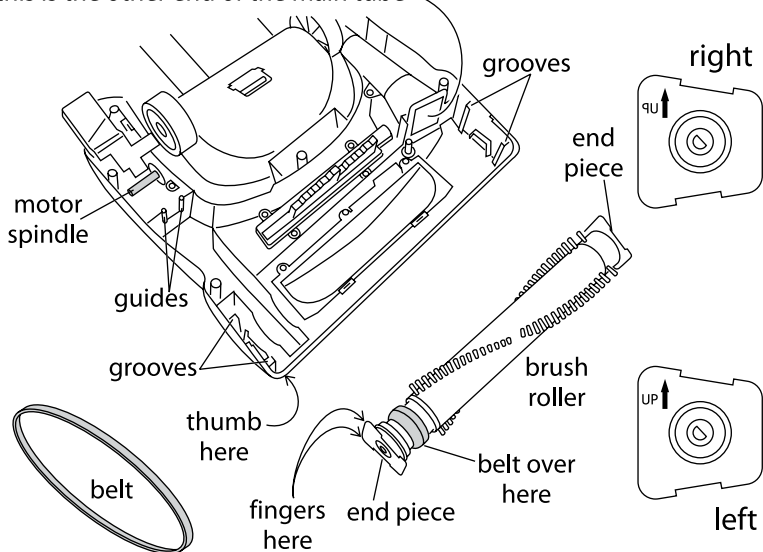
36 Push the left side fully into its grooves.

37 Turn the brush roller to check the belt moves freely.

✳ If you've jumped here from page 11, and just want to check for, or clear a blockage, you'll see the other end of the tube on the right of the cleaner, just behind the brush roller. You shouldn't need to disturb the brush roller to get to the tube.



this is the other end of the main tube



## replace the base

38 This can be done “as is”, or, if you find it awkward, try putting the cleaner back into upright mode.

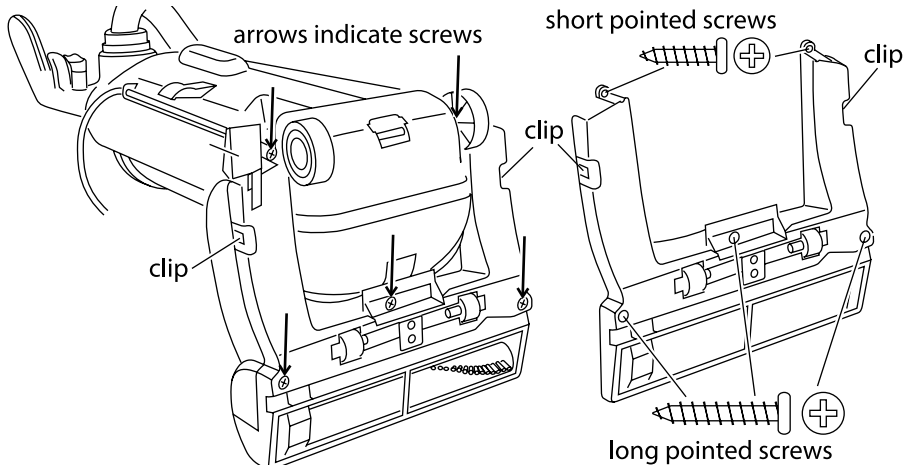
39 Put the front of the base on first, then the rear.

40 Press the rear to engage the clips at the sides.

41 Replace the screws. The short screws at the rear of the base, the longer screws towards the front.

42 Screw them in firmly, but don't overtighten them.

43 That's it – done.



## don't touch

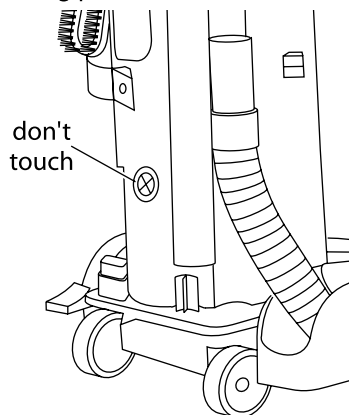
✱ There's a seal on the back of the cleaner that seems to fascinate people – **don't touch it**.

44 It's there to assist the manufacturing process.

45 Don't touch it – you'll break the cleaner.

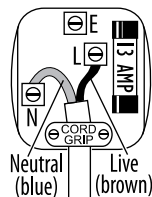
46 It's not meant to come off, but you can force it off if you try to turn it.

47 If you succeed, the cleaner will stop working.



## connection

The product doesn't need an earth. It has a 13A BS1362 fuse in a 13A BS1363 plug. To replace the plug, fit the blue wire to N, and the brown wire to L. Fit the cord grip. If in doubt, call an electrician. Don't use a non-rewireable/moulded plug unless the fuse cover is in place. If you remove the plug, dispose of it.



## wheelie bin symbol

To avoid environmental and health problems due to hazardous substances in electrical and electronic goods, appliances marked with this symbol mustn't be disposed of with unsorted municipal waste, but recovered, reused, or recycled.





## **helpline – 0845 658 9700**

If you need help, note the **Model No** (on the rating plate) and ring the helpline 0845 658 9700 (it's a local rate number).

### **service**

If you ring Customer Service, please have the **Model No** to hand, as we won't be able to help you without it. It's on the rating plate (usually underneath the product).

The cleaner isn't user-serviceable. If it's not working, read the instructions, check the plug fuse and main fuse/circuit breaker.

If that doesn't solve the problem, don't take the cleaner back to the place you bought it – they won't be able to fix it. Ring Customer Service.

If they advise you to return the product to us, pack it carefully, include a note with your name, address, day phone number, and what's wrong. If under guarantee, say where and when purchased, and include proof of purchase (till receipt). Send it to:

**Customer Service, Salton Europe Ltd, Failsworth, Manchester M35 0HS**

email: [service@saltoneurope.com](mailto:service@saltoneurope.com)

telephone: 0845 658 9700 (local rate number)

### **guarantee**

Defects affecting product functionality appearing within one year of purchase will be corrected by replacement or repair provided the product is used and maintained in accordance with the instructions. Your statutory rights are not affected. Documentation, packaging, and product specifications may change without notice.

### **wheelie bin symbol**

To avoid environmental and health problems due to hazardous substances in electrical and electronic goods, appliances marked with this symbol mustn't be disposed of with unsorted municipal waste, but recovered, reused, or recycled.

### **online**

[www.russellhobbs.co.uk](http://www.russellhobbs.co.uk) for more products