



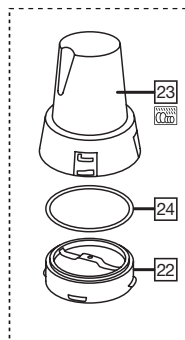
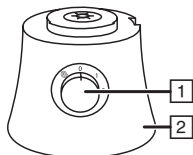
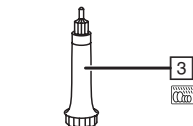
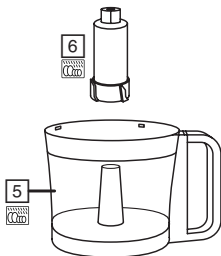
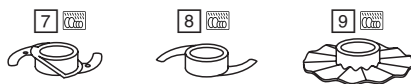
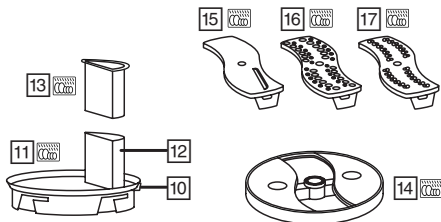
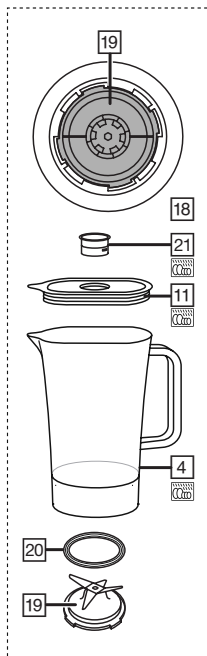
Russell Hobbs



instructions

£10,000 prize draw
EXTRA year guarantee
FREE rewards gallery

www.productregister.co.uk/rhobbs
Register online now!
See back for details



Read the instructions, keep them safe, pass them on if you pass the appliance on. Remove all packaging before use.

IMPORTANT SAFEGUARDS

Follow basic safety precautions, including:

This appliance can be used by children aged from 8 years and above and persons with reduced physical, sensory or mental capabilities or lack of experience and knowledge if they have been given supervision or instruction concerning use of the appliance in a safe way and understand the hazards involved. Children shall not play with the appliance. Cleaning and user maintenance shall not be made by children without supervision.

To avoid injury, take care handling the blades, emptying the jug, and cleaning.

Don't add hot liquid (over 40°C), as it may be ejected due to sudden steaming.

Misuse of the appliance may cause injury.

Don't leave it unattended while plugged in.

Unplug before assembling, dismantling or cleaning.


If the cable is damaged, return the appliance, to avoid hazard.

- Don't put the motor unit in liquid.
- Don't use the blender unless the lid and cap are fitted.
- Don't put utensils into the jug while the appliance is plugged in.
- Switch off (0) before fitting the jug to the motor unit.
- Switch off (0), and wait till the blades stop before removing the lid from the jug, or removing the jug from the motor unit.
- Don't use accessories or attachments other than those we supply.
- Don't use the appliance for any purpose other than those described in these instructions.
- Don't operate the appliance if it's damaged or malfunctions.

- You may use the processor and disc for cutting/grating for up to 2 minutes. Any other use should be restricted to 1½ minutes. After this, let the motor rest for 2 minutes.

HOUSEHOLD USE ONLY

PARTS

- | | |
|-----------------------|---|
| 1. Speed control | 14. Disc |
| 2. Motor unit | 15. Slicing attachment |
| 3. Spindle | 16. Coarse grater |
| 4. Blending jug | 17. Fine grater |
| 5. Jug | 18. Underside of blending jug |
| 6. Drive shaft | 19. Blade unit |
| 7. Chopper attachment | 20. Seal |
| 8. Mixer attachment | 21. Cap |
| 9. Creamer attachment | 22. Mill base |
| 10. Tab | 23. Bowl |
| 11. Lid | 24. Seal |
| 12. Tube |  Dishwasher safe |
| 13. Pusher | |

PREPARATION

- Sit the motor unit on a dry, firm, level surface.
- Route the cable so it doesn't overhang, and won't trip or catch.

USING THE BLENDER

- Lower the jug on to the motor unit, then turn the jug clockwise, to lock it in place.
 - Pull the lid up and off the jug – it's stiff, because of the seal.
 - Put the ingredients into the jug – don't fill past the max mark.
 - Place the lid onto the jug and push it down to seal it.
 - Align the pips on the cap with the slots in the hole, fit the cap in the hole, and turn clockwise. Don't run the blender without the cap.
 - Check that the speed control is set to **0**.
 - Put the plug into the power socket (switch it on, if it's switchable).
 - Turn the speed control clockwise (**1** = low, **2** = high).
- Use low speed (**1**) for lighter applications, using mainly liquid ingredients, and high speed (**2**) for heavier applications, using mainly solid ingredients.

- Turning it anti-clockwise to © will give you a short burst at high speed, for more precise control. In this direction, the control is spring-loaded. When you let go, it'll return to ●.
- To add ingredients while the blender is working, turn the cap clockwise to unlock it, lift it off, pour the new ingredients via the hole, then replace the cap, and turn it clockwise to lock it.

When you have finished:

1. Turn the speed control to ●, and wait till the blades stop moving.
2. Turn the jug anti-clockwise to unlock it, and lift it off the motor unit.

CRUSHING ICE

1. Start with half to threequarters of a cup of ice, or 4 to 6 cubes, and add 15ml (1 tbsp) of water.
2. Put the lid on the blender, then turn the speed control to © for a second or so, check the state of the ice, and repeat till the ice is the consistency that you need

BLADE UNIT

You may remove the blade unit for cleaning. This is best done with the jug upside down.

1. Grip the jug handle with one hand.
2. Grip the bottom of the blade unit with the other hand.
3. Turn the blade unit clockwise till it comes loose from the jug base.
4. Carefully, pull it up and out of the bottom of the jug.
5. Wash the seal and blade unit in warm soapy water, rinse, and air dry.
6. Take great care with the blades – don't handle them directly, use a nylon washing-up brush.
7. Replace the seal round the blade unit.
8. Turn the blade unit upside down, and replace it in the bottom of the jug base.
9. Turn the blade unit anti-clockwise to tighten it.

USING THE PROCESSOR

1. Unplug the appliance.
2. Fit the spindle to the top of the motor unit.

3. Lower the jug on to the motor unit, then turn the jug clockwise, to lock it in place.
4. Choose the attachment you need.

WITH THE SUPPORT

Use the chopper for pulverizing ingredients.

Use the mixer to mix ingredients together.

Use the creamer to thicken cream, to beat eggs, and to cream eggs and sugar together.

1. Fit the attachment over the support, and slide it to the bottom.
2. Lower the support into the centre of the jug, over the spindle.
3. Put the ingredients into the jug – don't fill it past the max mark.
4. Hold the lid with the tube slightly behind the jug handle, set it on the jug, then turn it clockwise, to lock the tab into the top of the handle.
5. To add ingredients while the motor is running:
 - a) lift the pushed out of the tube
 - b) add the ingredients via the tube
 - c) replace the pusher
6. To remove the lid, turn it anti-clockwise to unlock, then lift it off.

WITH THE DISC

1. Fit the slicer or one of the graters into the disc.
 2. Lower the disc over the top of the spindle.
 3. Hold the lid with the tube slightly behind the jug handle, set it on the jug, then turn it clockwise, to lock the tab into the top of the handle.
 4. Remove the pusher, and drop the ingredients down the tube.
 5. Replace the pusher, and use it to push the ingredients gently down the tube.
- Don't use fingers or cutlery to push food down the tube – only the pusher.
 - The blade(s) on top of the disc will slice or grate the food into the bowl.
 - Don't let the bowl get more than about half full.
 - To remove the lid, turn it anti-clockwise to unlock, then lift it off.
 - Turn the disc over, and press one of the metal ends in and down, to remove the slicer/grater.

USING THE MILL

1. Unplug the appliance.
2. Turn the mill upside down.
3. Turn the mill base clockwise, to release it, and lift it out of the mill.
4. Put the ingredients into the bowl (dry ingredients only). Don't fill it more than one third full.
5. Replace the mill base, inside the mill, and turn it anti-clockwise, to lock it in place.
6. Turn the mill right way up.
7. Lower the mill on to the motor unit, then turn the it clockwise, to lock it in place.
8. Turn the speed control to @ in short bursts till you achieve the size of grind you want.
9. Let the speed control return to 0, and wait till the blades stop moving.
10. Turn the mill anti-clockwise to unlock it, and lift it off the motor unit.
11. Turn the mill upside down.
12. Tap the mill a couple of times to move all the grounds into the bowl.
13. Turn the mill base clockwise, to release it, and lift it out of the mill.
14. Empty the bowl.

OVERLOAD PROTECTION

This appliance is fitted with a device to protect it in the event it becomes overloaded or overheats. If the appliance stops without warning for any reason, do the following:

1. Switch off (O) and unplug the appliance.
2. Allow the appliance to cool down for 15 min
3. Once cooled down the protection device will automatically reset and the appliance can be used normally again.

CARE AND MAINTENANCE

1. Switch off (0) and unplug before cleaning.
2. Wipe the outside of the motor unit with a clean damp cloth.
3. Handwash the removable parts.

4. If you use a dishwasher, the harsh environment inside the dishwasher will affect the surface finishes.
5. The damage should be cosmetic only, and should not affect the operation of the appliance.



You may wash these parts in a dishwasher.

RECIPES

CORIANDER PESTO (DIP, TOPPING OR SAUCE)

- 4 handfuls fresh leaf coriander
- 4 cloves fresh garlic
- 120g pine nuts
- 250ml olive oil
- 120g freshly grated Parmesan
- salt and pepper

Put the coriander, garlic, pine nuts, and a bit more than half the oil into the jug. Fit the lid, and process at moderate speed till it looks smooth. To adjust the thickness, add a little oil, give it a short burst, and repeat till it's right. Transfer to a bowl, stir in the Parmesan, taste, and adjust the seasoning. Serve as a dip (fairly thick), as a topping for soup (not too thick, but not runny), or tossed through warm pasta (fairly runny).

QUICK CHEESE AND TOMATO PIZZAS (2 MEDIUM PIZZAS)

- 2 sachets active dried yeast
- 2 tsp sugar
- 240ml lukewarm water
- 440g strong white flour
- 2 tbsp olive oil
- 1 tsp salt
- 1 300g jar pizza sauce
- 200g mozzarella cheese

Mix the water, yeast, and sugar in a bowl, and leave it for 5 minutes. Fit the mixer. Process the flour and salt at low speed. Add the water, yeast, and sugar mixture. Add the oil, increase speed till a dough ball forms, then stop. Now run for 20 seconds, and rest for 2 minutes. Do this twice more, then let the dough rest for 10 minutes.

Divide the dough into 2 balls, and stretch or roll each ball to fit a lightly oiled baking tray. Top with the pizza sauce. Use the coarse

grater to grate the mozzarella cheese. Spread the cheese over the pizzas and add other toppings if desired. Bake in a pre-heated oven at 190°C/gas mark 5 for 15-20 minutes.

Recipes are available on our website:

<http://www.russellhobbs.com/ifu/551078>

blender – <http://www.russellhobbs.com/ifu/550931>

smoothies – <http://www.russellhobbs.com/ifu/550941>



ENVIRONMENTAL PROTECTION

To avoid environmental and health problems due to hazardous substances in electrical and electronic goods, appliances marked with this symbol mustn't be disposed of with unsorted municipal waste, but recovered, reused, or recycled.

CUSTOMER SERVICE

If you ring, have the model number to hand, as we won't be able to help without it. It's on the rating plate (usually underneath the product).

The product isn't user-serviceable. If it isn't working, read the instructions, check the plug fuse and main fuse/circuit breaker. If it's still not working, consult your retailer.

If that doesn't solve the problem, ring Customer Service for advice.

If they tell you to return the product to us, pack it carefully, include a note with your name, address, day phone number, and what's wrong. If under guarantee, say where and when purchased, and include proof of purchase (till receipt). Send it to:

Customer Service, Spectrum Brands (UK) Ltd, Fir Street, Failsworth, Fir Street, Failsworth, Manchester M35 0HS

email: support@russellhobbs.com

telephone: 0845 658 9700 (local rate number)

GUARANTEE

Defects affecting product functionality appearing within two years of first retail purchase will be corrected by replacement or repair provided the product is used and maintained in accordance with the instructions. Your statutory rights are not affected. Documentation, packaging, and product specifications may change without notice.



ONLINE

www.russellhobbs.co.uk for more products



REGISTER ONLINE FOR –



£10,000 prize draw,



EXTRA year guarantee,



FREE rewards gallery

Visit www.russellhobbs.co.uk/productregister/

You must register within 28 days of purchase.